

Michaels®

Embroidery Design
Sewing Information

Production Worksheet

Wilcom TrueSizer



Design: **Ladybug**

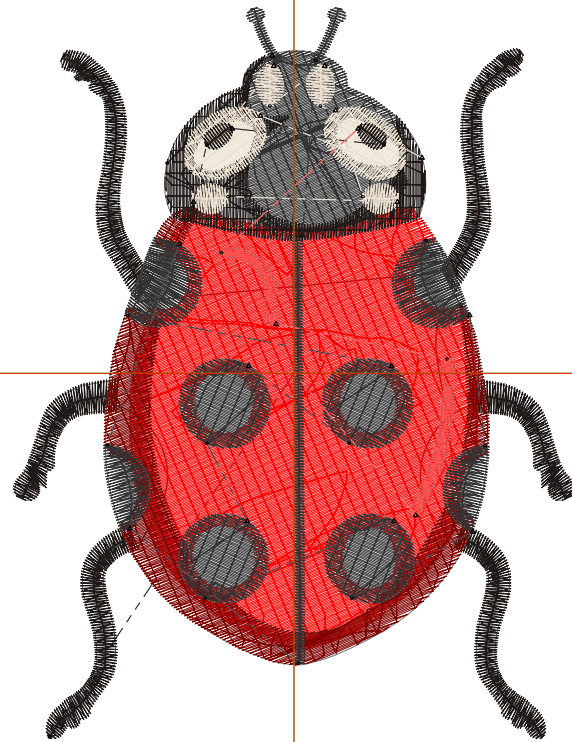
Title: **Ladybug**

Stitches: 12,144
 Height: 3.81 in
 Width: 2.92 in
 Colors: 6
 Colorway: Colorway 1
 Zoom: 1:1

Machine format: Tajima
 Color changes: 7
 Stops: 8
 Trims: 24
 Auto fabric: Pure Cotton
 Required stabilizer: Topping:
 Backing: Tear Away
 x 2
 Appliqués: 0
 Left: 37.1 mm
 Right: 37.1 mm
 Up: 48.3 mm
 Down: 48.4 mm
 EndX: 0.00 in
 EndY: 0.00 in
 Area: 11.13 in²
 Max stitch: 8.5 mm
 Min stitch: 0.3 mm
 Max jump: 7.0 mm
 Total thread: 221.35ft
 Total bobbin: 82.40ft

Stop Sequence:

| # | # | Color | St. | Code | Name | Chart |
|----|---|----------|-------|------|--------|--------|
| 1. | 5 | Black | 1,640 | 13 | Black | Wilcom |
| 2. | 2 | Red | 4,079 | 5 | Red | Wilcom |
| 3. | 3 | Dark Red | 1,508 | 7 | | Wilcom |
| 4. | 6 | Grey | 3,012 | 14 | Grey | Wilcom |
| 5. | 5 | Black | 935 | 13 | Black | Wilcom |
| 6. | 1 | Yellow | 640 | 4 | Yellow | Wilcom |
| 7. | 5 | Black | 74 | 13 | Black | Wilcom |
| 8. | 4 | Pink | 254 | 10 | Pink | Wilcom |



Color Film

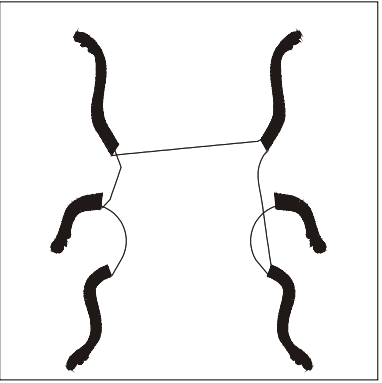
Wilcom TrueSizer



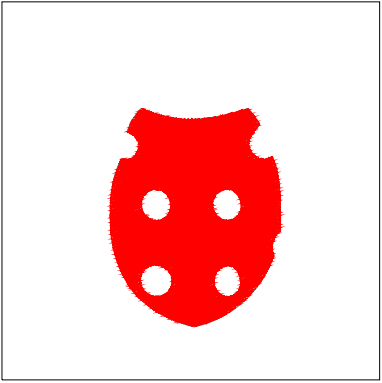
Design: **Ladybug**

Title: **Ladybug**

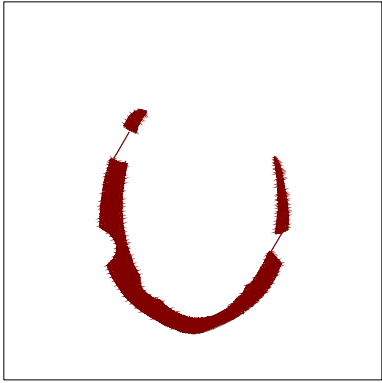
Stitches: 12,144
Height: 3.81 in
Width: 2.92 in
Colors: 6
Colorway: Colorway 1
Zoom: 0.49



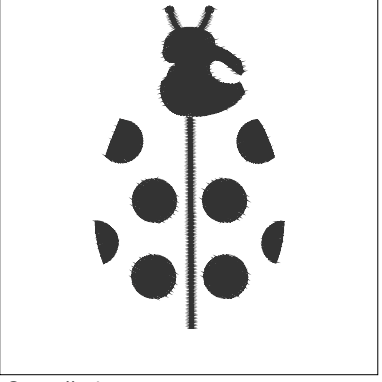
Stop #: 1
Code: 13
Name: Black
Chart: Wilcom
Stitches: 1,640
Thread used: 30.70ft



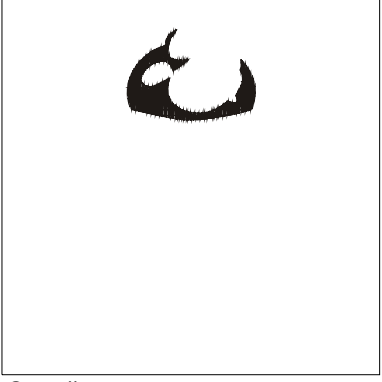
Stop #: 2
Code: 5
Name: Red
Chart: Wilcom
Stitches: 4,079
Thread used: 79.88ft



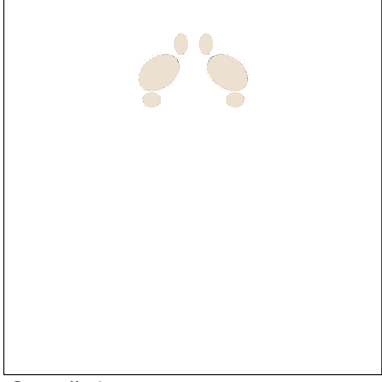
Stop #: 3
Code: 7
Name:
Chart: Wilcom
Stitches: 1,508
Thread used: 23.78ft



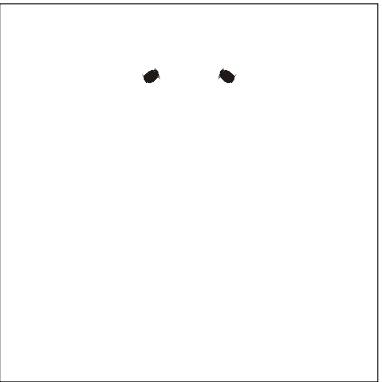
Stop #: 4
Code: 14
Name: Grey
Chart: Wilcom
Stitches: 3,012
Thread used: 54.98ft



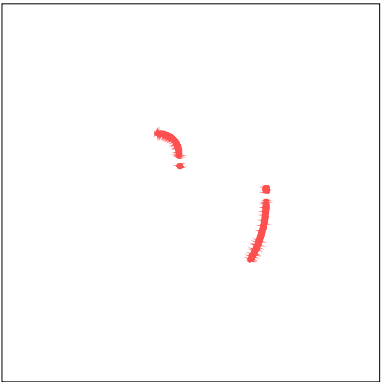
Stop #: 5
Code: 13
Name: Black
Chart: Wilcom
Stitches: 935
Thread used: 14.10ft



Stop #: 6
Code: 4
Name: Yellow
Chart: Wilcom
Stitches: 640
Thread used: 10.66ft



Stop #: 7
Code: 13
Name: Black
Chart: Wilcom
Stitches: 74
Thread used: 1.12ft



Stop #: 8
Code: 10
Name: Pink
Chart: Wilcom
Stitches: 254
Thread used: 3.49ft