

Michaels®

Embroidery Design  
Sewing Information

# Production Worksheet

Wilcom TrueSizer



Design: **Zodiac Signs Scorpio**

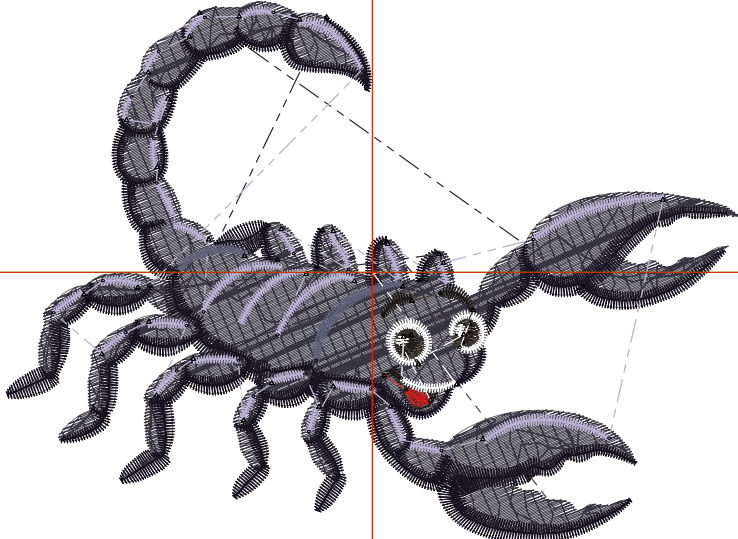
Title: **Zodiac Signs Scorpio**

Stitches: 12,333  
 Height: 2.82 in  
 Width: 3.81 in  
 Colors: 8  
 Colorway: Colorway 1  
 Zoom: 1:1

Machine format: Tajima  
 Color changes: 9  
 Stops: 10  
 Trims: 48  
 Auto fabric: Pure Cotton  
 Required stabilizer: Topping:  
 Backing: Tear Away x 2  
 Appliqués: 0  
 Left: 48.4 mm  
 Right: 48.4 mm  
 Up: 35.8 mm  
 Down: 35.8 mm  
 EndX: 0.00 in  
 EndY: 0.00 in  
 Area: 10.75 in<sup>2</sup>  
 Max stitch: 9.1 mm  
 Min stitch: 0.2 mm  
 Max jump: 6.8 mm  
 Total thread: 187.74ft  
 Total bobbin: 61.35ft

Stop Sequence:

#	#	Color	St.	Code	Name	Chart
1.	8	■	5,679	19		Wilcom
2.	2	■	4,064	8	Purple	Wilcom
3.	4	■	1,591	12	Powder Blue	Wilcom
4.	6	■	202	14		Wilcom
5.	3	■	159	11		Wilcom
6.	5	■	90	13	Black	Wilcom
7.	7	□	237	15	White	Wilcom
8.	5	■	195	13	Black	Wilcom
9.	1	■	33	5	Red	Wilcom
10.	7	□	81	15	White	Wilcom



# Color Film

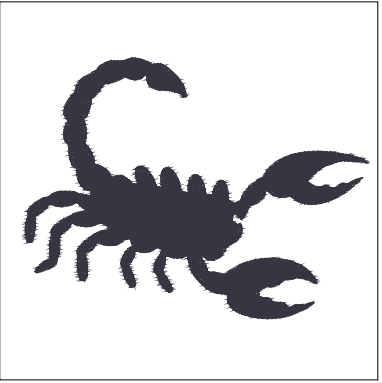
Wilcom TrueSizer



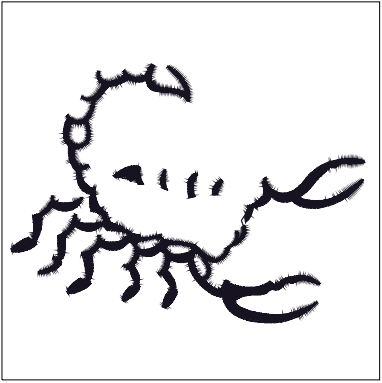
Design: **Zodiac Signs Scorpio**

Title: **Zodiac Signs Scorpio**

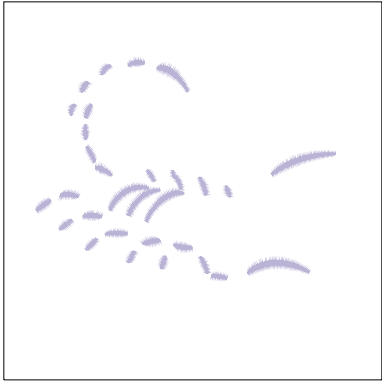
Stitches: 12,333  
Height: 2.82 in  
Width: 3.81 in  
Colors: 8  
Colorway: Colorway 1  
Zoom: 0.49



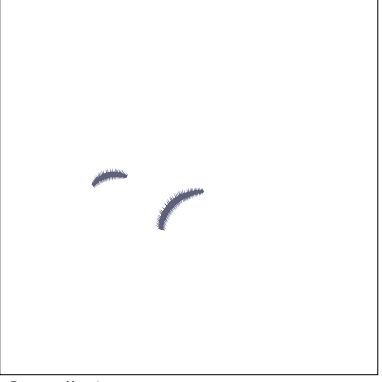
Stop #: 1  
Code: 19  
Name:  
Chart: Wilcom  
Stitches: 5,679  
Thread used: 99.16ft



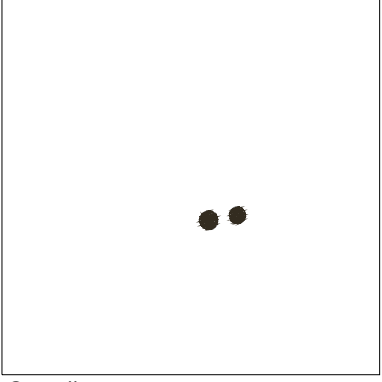
Stop #: 2  
Code: 8  
Name: Purple  
Chart: Wilcom  
Stitches: 4,064  
Thread used: 55.53ft



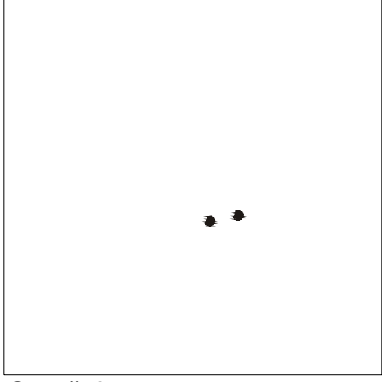
Stop #: 3  
Code: 12  
Name: Powder Blue  
Chart: Wilcom  
Stitches: 1,591  
Thread used: 17.74ft



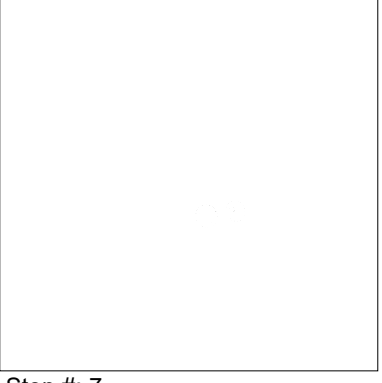
Stop #: 4  
Code: 14  
Name:  
Chart: Wilcom  
Stitches: 202  
Thread used: 2.47ft



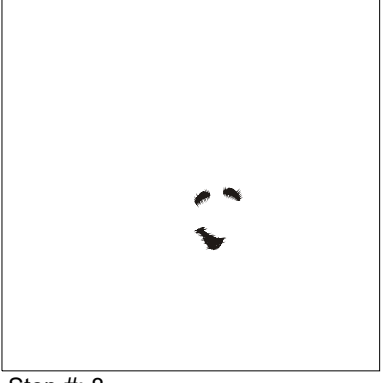
Stop #: 5  
Code: 11  
Name:  
Chart: Wilcom  
Stitches: 159  
Thread used: 2.22ft



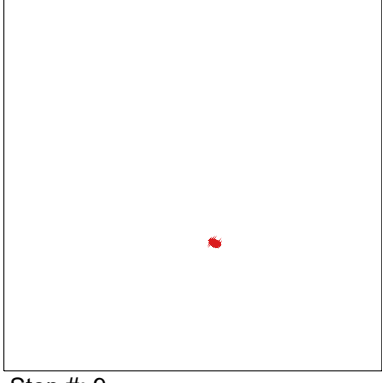
Stop #: 6  
Code: 13  
Name: Black  
Chart: Wilcom  
Stitches: 90  
Thread used: 1.02ft



Stop #: 7  
Code: 15  
Name: White  
Chart: Wilcom  
Stitches: 237  
Thread used: 2.61ft



Stop #: 8  
Code: 13  
Name: Black  
Chart: Wilcom  
Stitches: 195  
Thread used: 2.38ft



Stop #: 9  
Code: 5  
Name: Red  
Chart: Wilcom  
Stitches: 33  
Thread used: 0.42ft

**Color Film**

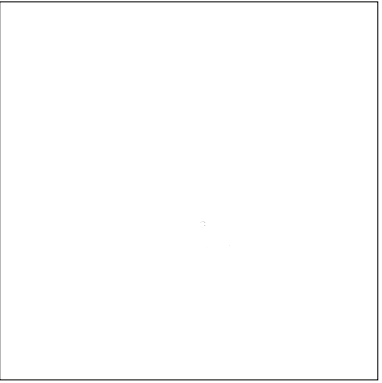
Wilcom TrueSizer



Design: **Zodiac Signs Scorpio**

Title: **Zodiac Signs Scorpio**

Stitches: 12,333  
Height: 2.82 in  
Width: 3.81 in  
Colors: 8  
Colorway: Colorway 1  
Zoom: 0.49



Stop #: 10  
Code: 15  
Name: White  
Chart: Wilcom  
Stitches: 81  
Thread used: 0.91ft