

Michaels®

Embroidery Design  
Sewing Information

# Production Worksheet

Wilcom TrueSizer

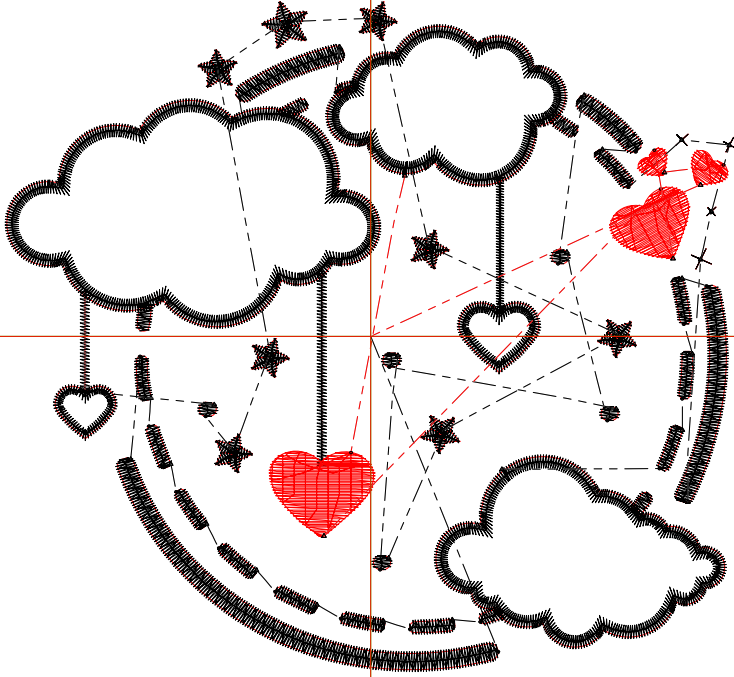


Stitches: 6,547  
 Height: 3.49 in  
 Width: 3.81 in  
 Colors: 2  
 Colorway: Colorway 1  
 Zoom: 1:1

Design: **Heart and Clouds Border**

Title: **Heart and Clouds Border**

Machine format: Tajima  
 Color changes: 1  
 Stops: 2  
 Trims: 39  
 Auto fabric: Pure Cotton  
 Required stabilizer: Topping:  
 Backing: Tear Away  
 x 2  
 Appliqués: 0  
 Left: 48.4 mm  
 Right: 48.4 mm  
 Up: 44.4 mm  
 Down: 44.4 mm  
 EndX: 0.00 in  
 EndY: 0.00 in  
 Area: 13.31 in<sup>2</sup>  
 Max stitch: 7.0 mm  
 Min stitch: 0.2 mm  
 Max jump: 7.0 mm  
 Total thread: 93.30ft  
 Total bobbin: 29.44ft



Stop Sequence:

#	#	Color	St.	Code	Name	Chart
1.	14	■	5,879	14	Black	Default
2.	3	■	666	3	Red	Default