

Michaels®

Embroidery Design  
Sewing Information

# Production Worksheet

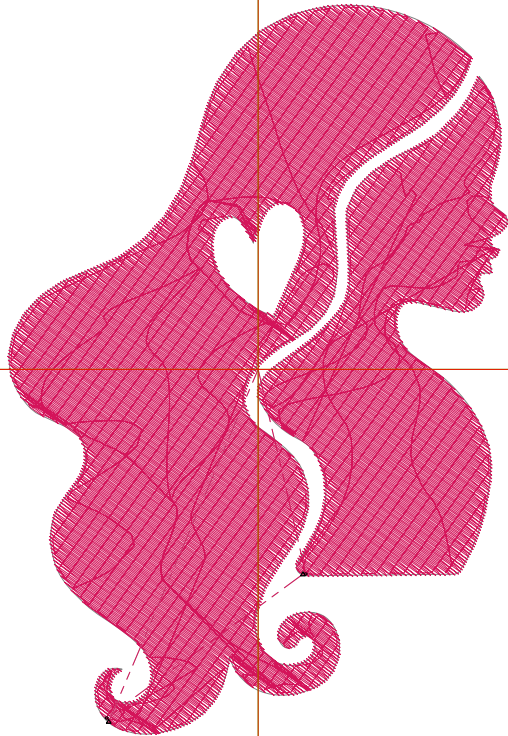
Wilcom TrueSizer



Design: **Pink Silhouette Woman**

Title: **Pink Silhouette Woman**

Stitches: 7,567  
Height: 3.80 in  
Width: 2.61 in  
Colors: 1  
Colorway: Colorway 1  
Zoom: 1:1



Machine format: Tajima  
Color changes: 0  
Stops: 1  
Trims: 2  
Auto fabric: Pure Cotton  
Required stabilizer: Topping:  
Backing: Tear Away  
x 2  
Appliqués: 0  
Left: 33.1 mm  
Right: 33.1 mm  
Up: 48.3 mm  
Down: 48.3 mm  
EndX: 0.00 in  
EndY: 0.00 in  
Area: 9.92 in<sup>2</sup>  
Max stitch: 6.8 mm  
Min stitch: 0.3 mm  
Max jump: 6.8 mm  
Total thread: 154.29ft  
Total bobbin: 61.82ft

Stop Sequence:

#	#	Color	St.	Code	Name	Chart
1.	1	■	7,565	1		Wilcom

# Color Film

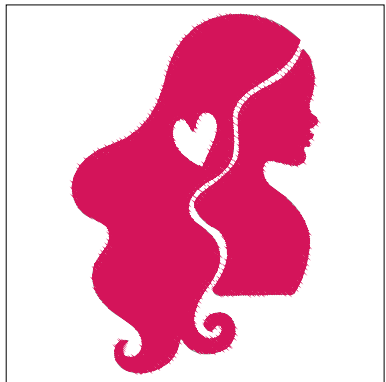
Wilcom TrueSizer



Design: **Pink Silhouette Woman**

Title: **Pink Silhouette Woman**

Stitches: 7,567  
Height: 3.80 in  
Width: 2.61 in  
Colors: 1  
Colorway: Colorway 1  
Zoom: 0.49



Stop #: 1  
Code: 1  
Name:  
Chart: Wilcom  
Stitches: 7,565  
Thread used: 153.96ft