

Michaels®

Embroidery Design
Sewing Information

Production Worksheet

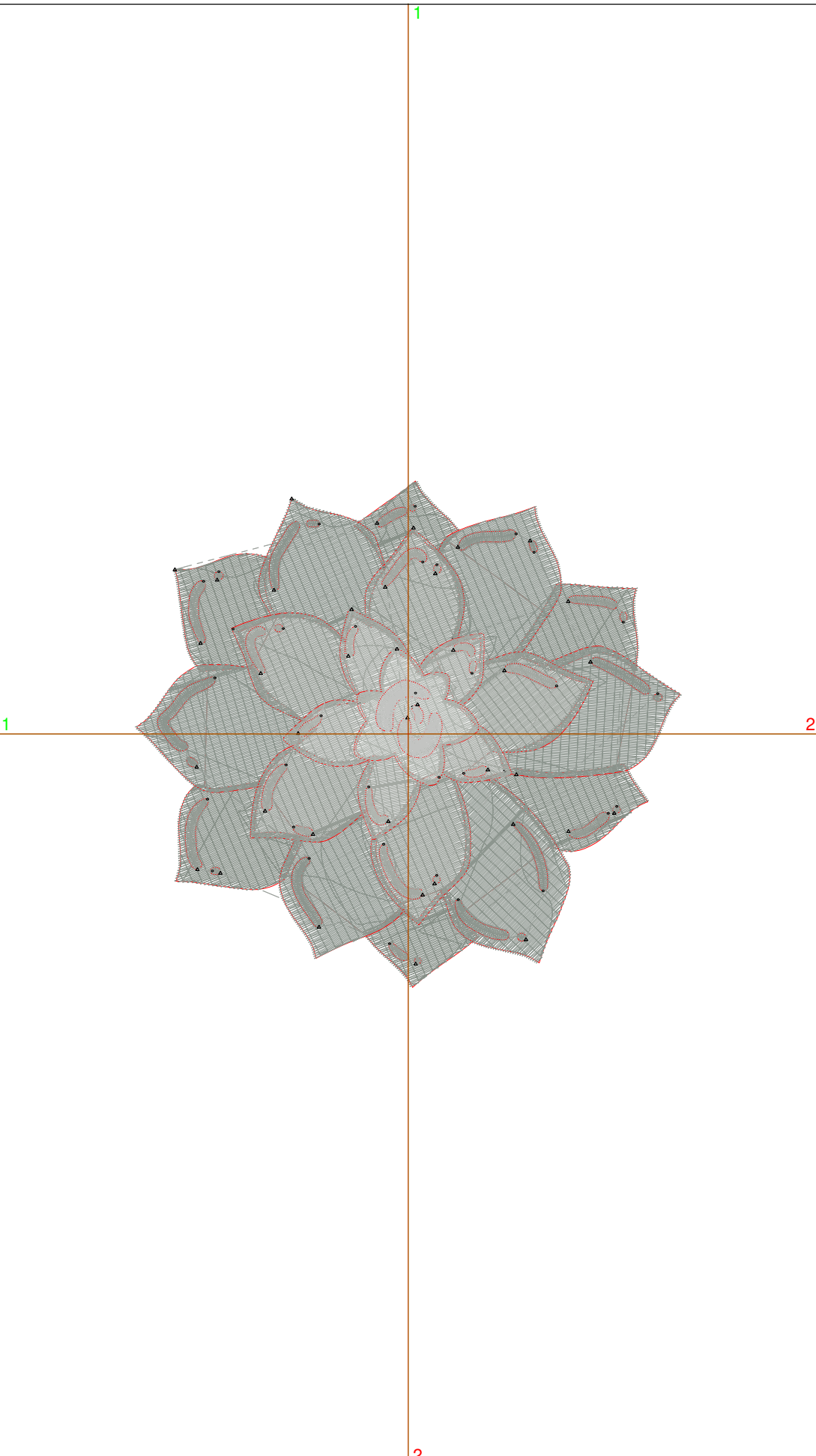
Wilcom TrueSizer



Design: **Succulents**

Title: **Succulents**

Stitches: 16,166
 Height: 3.51 in
 Width: 3.80 in
 Colors: 6
 Colorway: Colorway 1
 Zoom: 1:1



Machine format: Tajima
 Color changes: 6
 Stops: 7
 Trims: 38
 Auto fabric: Pure Cotton
 Required stabilizer: Topping:
 Backing: Tear Away
 x 2
 Appliqués: 0
 Left: 48.2 mm
 Right: 48.2 mm
 Up: 44.6 mm
 Down: 44.6 mm
 EndX: 0.00 in
 EndY: 0.00 in
 Area: 13.32 in²
 Max stitch: 10.2 mm
 Min stitch: 0.3 mm
 Max jump: 7.0 mm
 Total thread: 303.77ft
 Total bobbin: 115.79ft

Stop Sequence:

#	#	Color	St.	Code	Name	Chart
1.	14	■	3,143	14	Wilcom	
2.	29	■	553	29	Wilcom	
3.	24	■	5,987	24	Wilcom	
4.	29	■	3,127	29	Wilcom	
5.	35	■	2,010	35	Wilcom	
6.	39	■	1,017	39	Wilcom	
7.	37	■	327	37	Wilcom	

Color Film

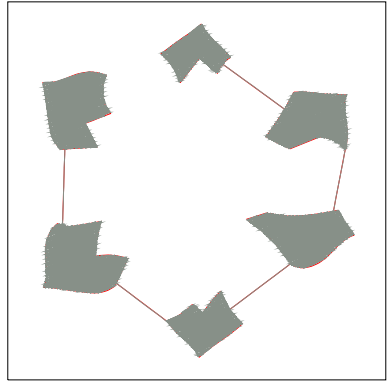
Wilcom TrueSizer



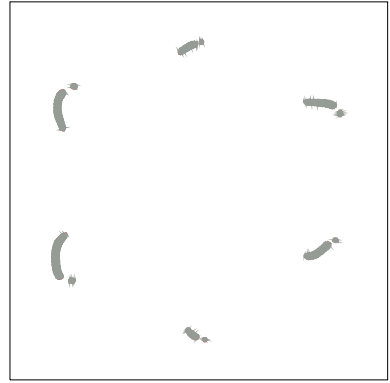
Design: **Succulents**

Title: **Succulents**

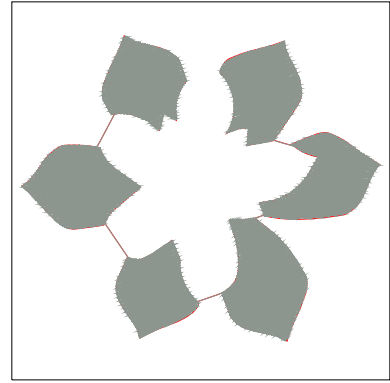
Stitches: 16,166
Height: 3.51 in
Width: 3.80 in
Colors: 6
Colorway: Colorway 1
Zoom: 0.49



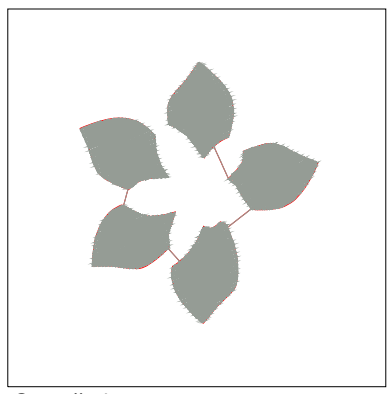
Stop #: 1
Code: 14
Name:
Chart: Wilcom
Stitches: 3,143
Thread used: 60.13ft



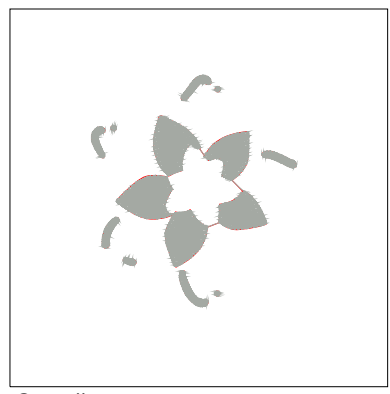
Stop #: 2
Code: 29
Name:
Chart: Wilcom
Stitches: 553
Thread used: 7.66ft



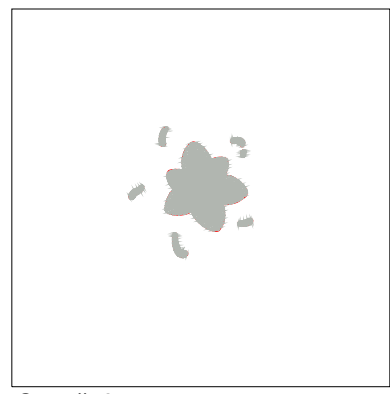
Stop #: 3
Code: 24
Name:
Chart: Wilcom
Stitches: 5,987
Thread used: 115.44ft



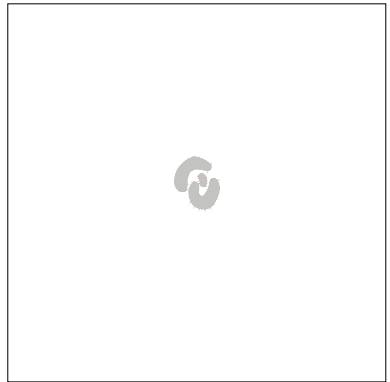
Stop #: 4
Code: 29
Name:
Chart: Wilcom
Stitches: 3,127
Thread used: 61.36ft



Stop #: 5
Code: 35
Name:
Chart: Wilcom
Stitches: 2,010
Thread used: 33.49ft



Stop #: 6
Code: 39
Name:
Chart: Wilcom
Stitches: 1,017
Thread used: 17.61ft



Stop #: 7
Code: 37
Name:
Chart: Wilcom
Stitches: 327
Thread used: 5.77ft