

Michaels®

Embroidery Design  
Sewing Information

# Production Worksheet

Wilcom TrueSizer



Design: **Flip-Flops**

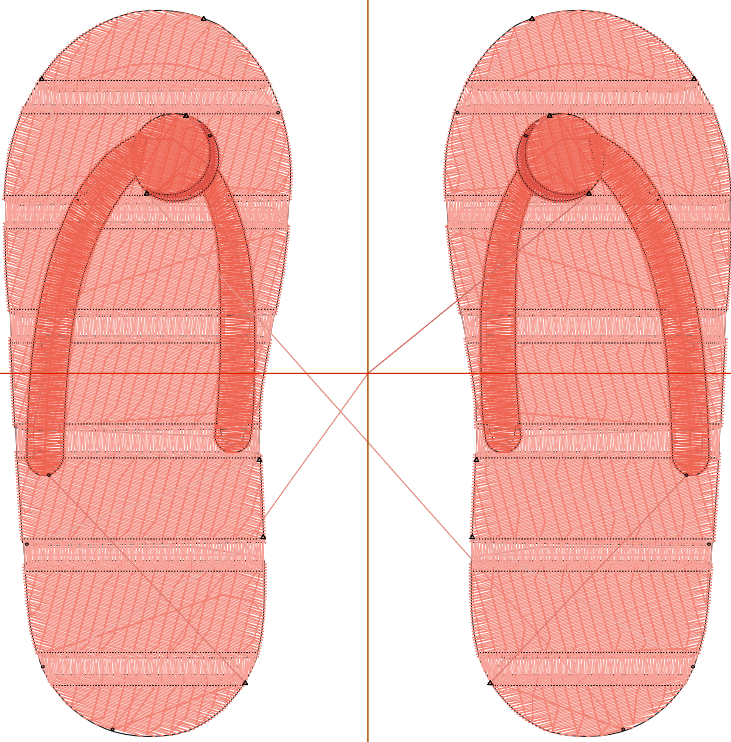
Title: **Flip-Flops**

Stitches: 17,992  
 Height: 3.78 in  
 Width: 3.80 in  
 Colors: 4  
 Colorway: Madeira Classic 40  
 Zoom: 1:1

Machine format: Tajima  
 Color changes: 7  
 Stops: 8  
 Trims: 14  
 Auto fabric: Pure Cotton  
 Required stabilizer: Topping:  
 Backing: Tear Away x 2  
 Appliqués: 0  
 Left: 48.3 mm  
 Right: 48.3 mm  
 Up: 48.0 mm  
 Down: 48.0 mm  
 EndX: 0.00 in  
 EndY: 0.00 in  
 Area: 14.39 in<sup>2</sup>  
 Max stitch: 6.9 mm  
 Min stitch: 0.3 mm  
 Max jump: 6.9 mm  
 Total thread: 355.22ft  
 Total bobbin: 138.98ft

Stop Sequence:

#	#	Color	St.	Code	Name	Chart
1.	2	■	4,974	1309	Madeira Classic 40	
2.	4	■	2,871	1321	Madeira Classic 40	
3.	3	■	1,003	1172	Madeira Classic 40	
4.	1	■	124	1146	Madeira Classic 40	
5.	2	■	5,015	1309	Madeira Classic 40	
6.	4	■	2,874	1321	Madeira Classic 40	
7.	3	■	1,001	1172	Madeira Classic 40	
8.	1	■	128	1146	Madeira Classic 40	



# Color Film

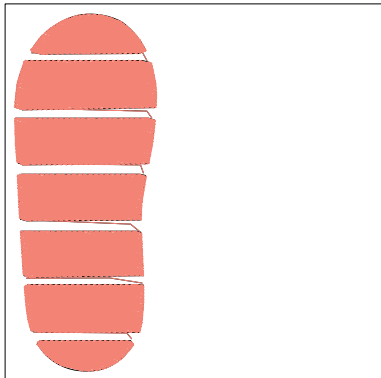
Wilcom TrueSizer



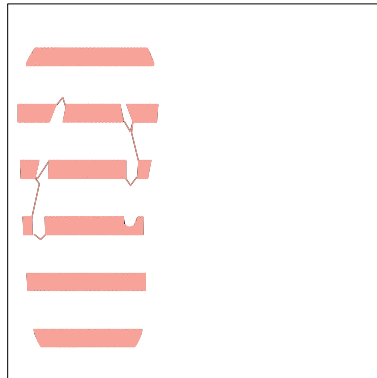
Design: **Flip-Flops**

Title: **Flip-Flops**

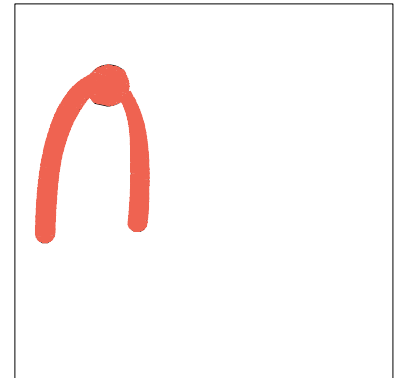
Stitches: 17,992  
Height: 3.78 in  
Width: 3.80 in  
Colors: 4  
Colorway: Madeira Classic 40  
Zoom: 0.49



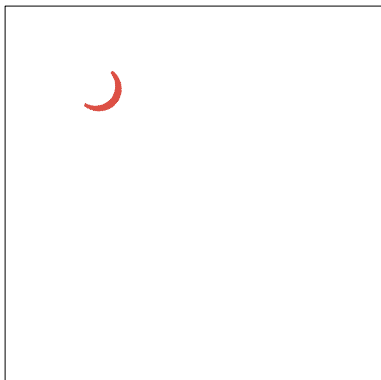
Stop #: 1  
Code: 1309  
Name:  
Chart: Madeira Classic 40  
Stitches: 4,974  
Thread used: 102.45ft



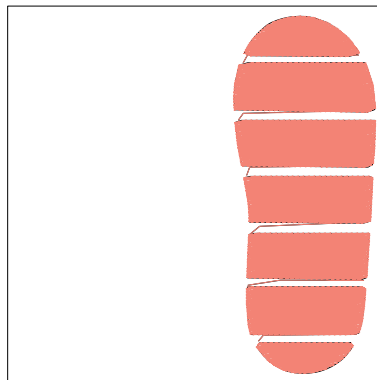
Stop #: 2  
Code: 1321  
Name:  
Chart: Madeira Classic 40  
Stitches: 2,871  
Thread used: 48.65ft



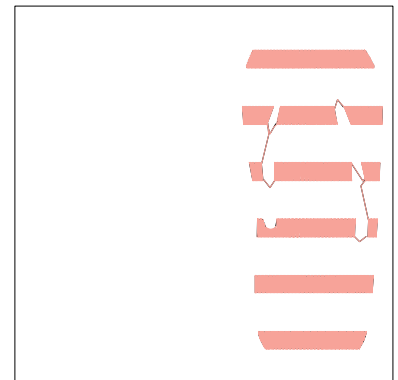
Stop #: 3  
Code: 1172  
Name:  
Chart: Madeira Classic 40  
Stitches: 1,003  
Thread used: 22.81ft



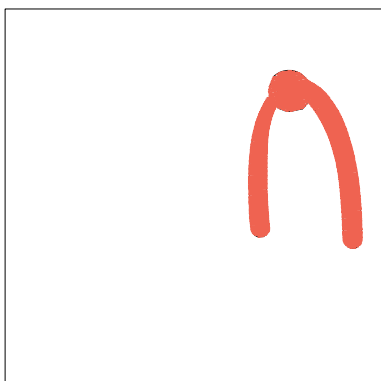
Stop #: 4  
Code: 1146  
Name:  
Chart: Madeira Classic 40  
Stitches: 124  
Thread used: 1.59ft



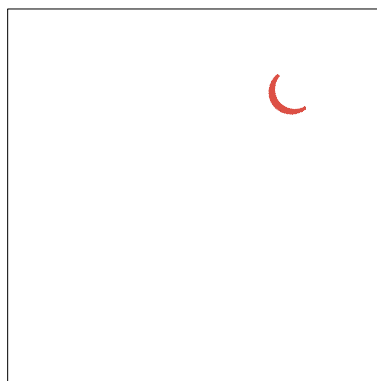
Stop #: 5  
Code: 1309  
Name:  
Chart: Madeira Classic 40  
Stitches: 5,015  
Thread used: 103.95ft



Stop #: 6  
Code: 1321  
Name:  
Chart: Madeira Classic 40  
Stitches: 2,874  
Thread used: 48.71ft



Stop #: 7  
Code: 1172  
Name:  
Chart: Madeira Classic 40  
Stitches: 1,001  
Thread used: 22.82ft



Stop #: 8  
Code: 1146  
Name:  
Chart: Madeira Classic 40  
Stitches: 128  
Thread used: 1.61ft