

*Michaels*<sup>®</sup>

**Embroidery Design  
Sewing Information**

# Production Worksheet

Wilcom TrueSizer



Design: **Shy Cupid**

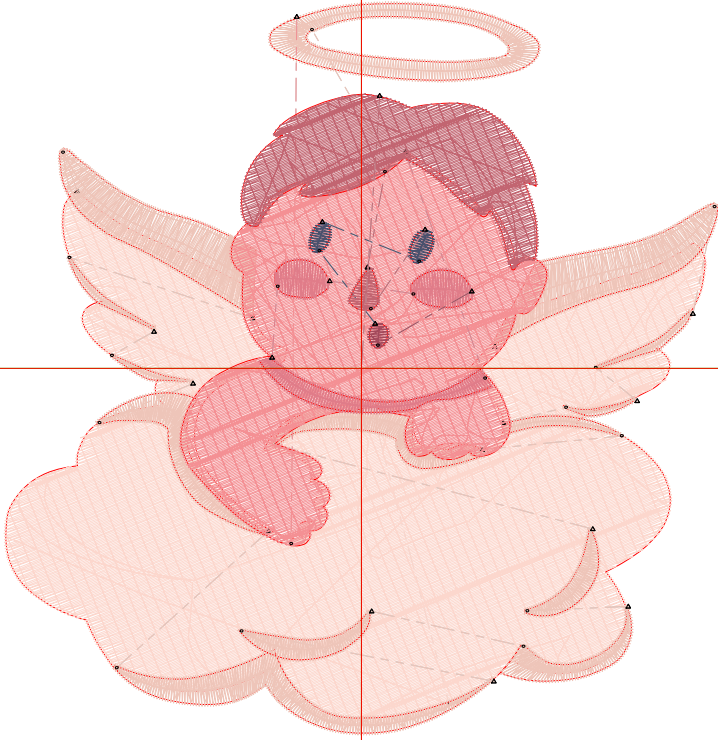
Title: **Shy Cupid**

Stitches: 15,143  
 Height: 3.82 in  
 Width: 3.72 in  
 Colors: 7  
 Colorway: Colorway 1  
 Zoom: 1:1

Machine format: Tajima  
 Color changes: 6  
 Stops: 7  
 Trims: 24  
 Auto fabric: Pure Cotton  
 Required stabilizer: Topping:  
 Backing: Tear Away  
 x 2  
 Appliqués: 0  
 Left: 47.3 mm  
 Right: 47.3 mm  
 Up: 48.5 mm  
 Down: 48.5 mm  
 EndX: 0.00 in  
 EndY: 0.00 in  
 Area: 14.21 in<sup>2</sup>  
 Max stitch: 10.4 mm  
 Min stitch: 0.3 mm  
 Max jump: 7.0 mm  
 Total thread: 300.09ft  
 Total bobbin: 117.59ft

Stop Sequence:

#	#	Color	St.	Code	Name	Chart
1.	9		6,846	9	Wilcom	
2.	7		3,619	7	Wilcom	
3.	10		3,009	10	Wilcom	
4.	1		380	1	Wilcom	
5.	3		32	3	Wilcom	
6.	2		86	2	Wilcom	
7.	6		1,169	6	Wilcom	



**Color Film**

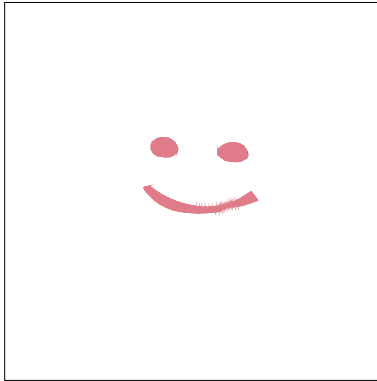
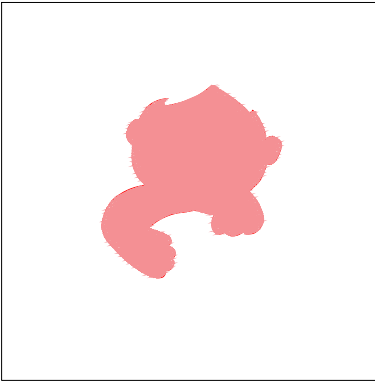
Wilcom TrueSizer



Design: **Shy Cupid**

Title: **Shy Cupid**

Stitches: 15,143  
Height: 3.82 in  
Width: 3.72 in  
Colors: 7  
Colorway: Colorway 1  
Zoom: 0.49

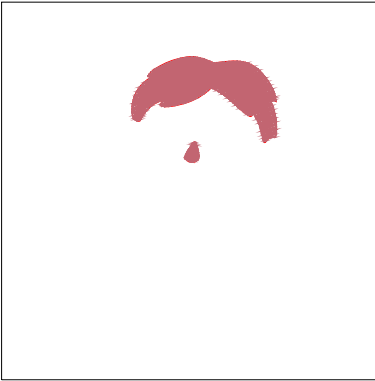
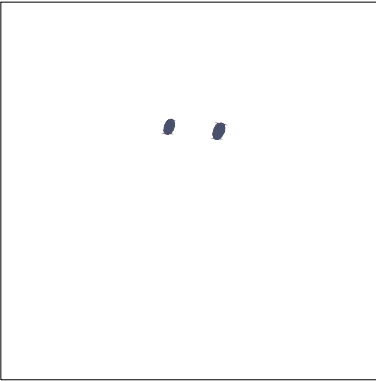
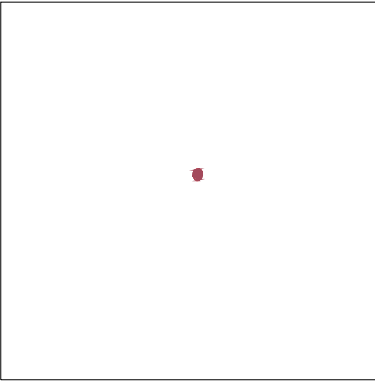


Stop #: 1  
Code: 9  
Name:  
Chart: Wilcom  
Stitches: 6,846  
Thread used: 144.98ft

Stop #: 2  
Code: 7  
Name:  
Chart: Wilcom  
Stitches: 3,619  
Thread used: 60.95ft

Stop #: 3  
Code: 10  
Name:  
Chart: Wilcom  
Stitches: 3,009  
Thread used: 61.41ft

Stop #: 4  
Code: 1  
Name:  
Chart: Wilcom  
Stitches: 380  
Thread used: 6.75ft



Stop #: 5  
Code: 3  
Name:  
Chart: Wilcom  
Stitches: 32  
Thread used: 0.48ft

Stop #: 6  
Code: 2  
Name:  
Chart: Wilcom  
Stitches: 86  
Thread used: 1.31ft

Stop #: 7  
Code: 6  
Name:  
Chart: Wilcom  
Stitches: 1,169  
Thread used: 21.90ft