

Michaels®

Embroidery Design
Sewing Information

Production Worksheet

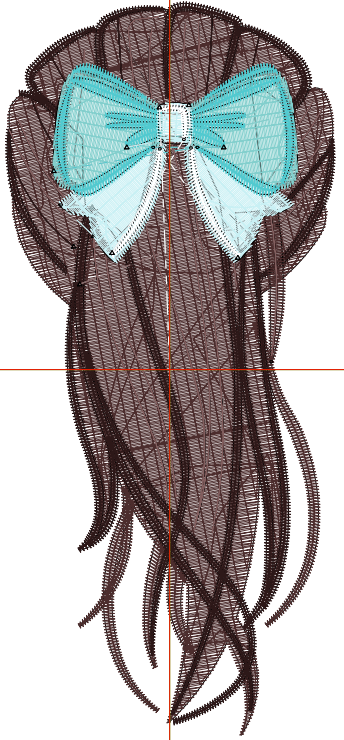
Wilcom TrueSizer



Stitches: 12,879
Height: 3.82 in
Width: 1.72 in
Colors: 7
Colorway: Colorway 1
Zoom: 1:1

Design: Girl with hair bow
Title: Girl with hair bow

Machine format: Tajima
Color changes: 10
Stops: 11
Trims: 14
Auto fabric: Fabric Name
Required stabilizer: Stabilizer
Appliqués: 0
Left: 21.8 mm
Right: 21.9 mm
Up: 48.7 mm
Down: 48.3 mm
EndX: 0.00 in
EndY: 0.00 in
Area: 6.56 in²
Max stitch: 6.9 mm
Min stitch: 0.3 mm
Max jump: 6.9 mm
Total thread: 200.84ft
Total bobbin: 66.80ft



Stop Sequence:

#	#	Color	St.	Code	Name	Chart
1.	6	■	1,853	14	Brown	Default
2.	5	■	1,098	11	Dark Red	Default
3.	7	■	227	15	Pink	Default
4.	6	■	3,850	14	Brown	Default
5.	5	■	2,584	11	Dark Red	Default
6.	7	■	348	15	Pink	Default
7.	4	■	728	15	Pink	Default
8.	3	■	874	6	Magenta	Default
9.	1	■	958	1	Dark Green	Default
10.	4	■	80	15	Pink	Default
11.	2	■	277	5	Cyan	Default