

Michaels®

Embroidery Design  
Sewing Information

# Production Worksheet

Wilcom TrueSizer

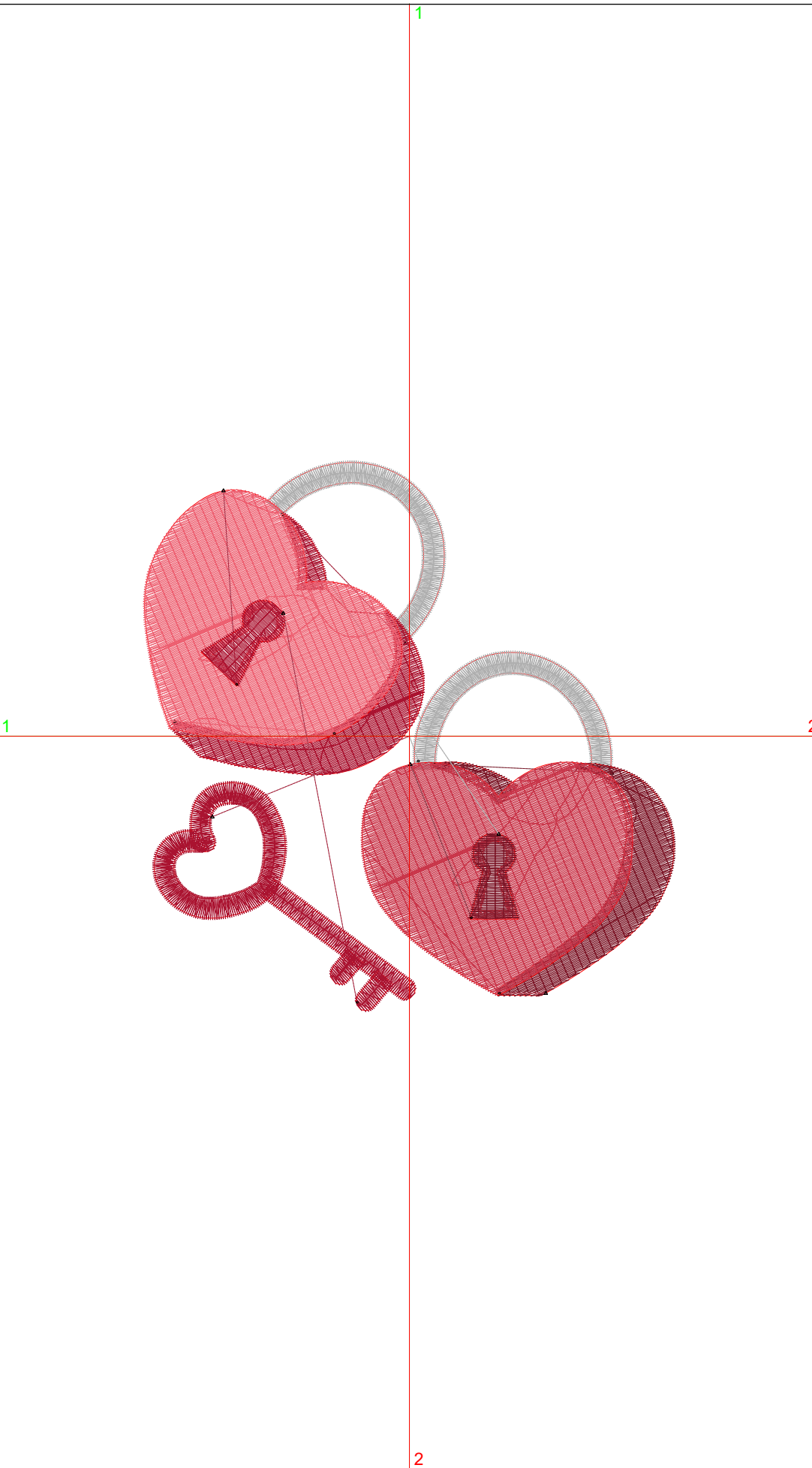


Design: **Heart Lock**

Title: **Heart Lock**

Stitches: 9,900  
 Height: 3.82 in  
 Width: 3.69 in  
 Colors: 5  
 Colorway: Colorway 1  
 Zoom: 1:1

Machine format: Tajima  
 Color changes: 7  
 Stops: 8  
 Trims: 9  
 Auto fabric: Pure Cotton  
 Required stabilizer: Topping:  
 Backing: Tear Away  
 x 2  
 Appliqués: 0  
 Left: 46.9 mm  
 Right: 46.9 mm  
 Up: 48.5 mm  
 Down: 48.5 mm  
 EndX: 0.00 in  
 EndY: 0.00 in  
 Area: 14.11 in<sup>2</sup>  
 Max stitch: 8.2 mm  
 Min stitch: 0.2 mm  
 Max jump: 6.9 mm  
 Total thread: 204.22ft  
 Total bobbin: 80.97ft



Stop Sequence:

#	#	Color	St.	Code	Name	Chart
1.	14	█	480	14	Wilcom	
2.	9	█	1,001	9	Wilcom	
3.	6	█	2,670	6	Wilcom	
4.	9	█	264	9	Wilcom	
5.	14	█	487	14	Wilcom	
6.	7	█	1,075	7	Wilcom	
7.	1	█	2,631	1	Wilcom	
8.	7	█	1,290	7	Wilcom	

# Color Film

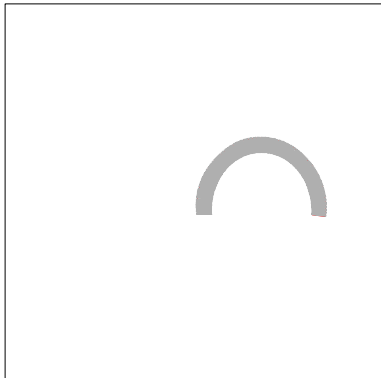
Wilcom TrueSizer



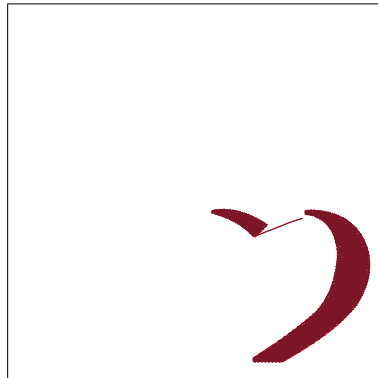
Design: **Heart Lock**

Title: **Heart Lock**

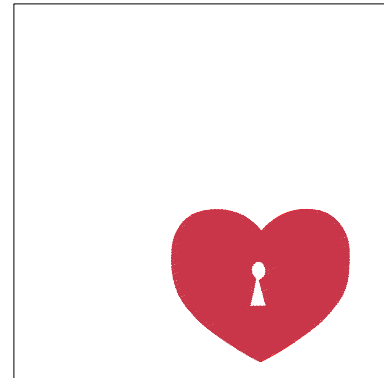
Stitches: 9,900  
Height: 3.82 in  
Width: 3.69 in  
Colors: 5  
Colorway: Colorway 1  
Zoom: 0.49



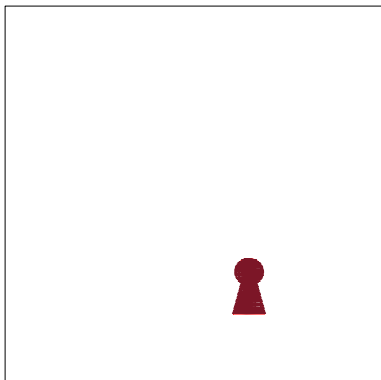
Stop #: 1  
Code: 14  
Name:  
Chart: Wilcom  
Stitches: 480  
Thread used: 10.47ft



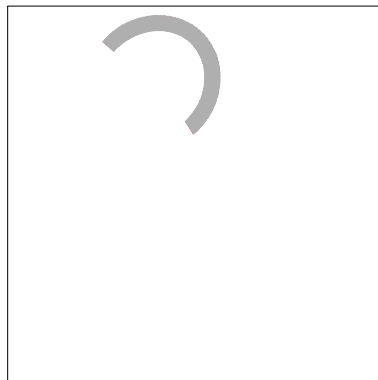
Stop #: 2  
Code: 9  
Name:  
Chart: Wilcom  
Stitches: 1,001  
Thread used: 18.17ft



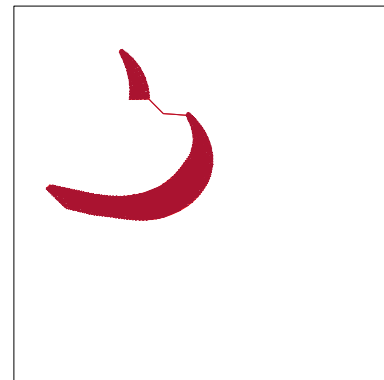
Stop #: 3  
Code: 6  
Name:  
Chart: Wilcom  
Stitches: 2,670  
Thread used: 57.06ft



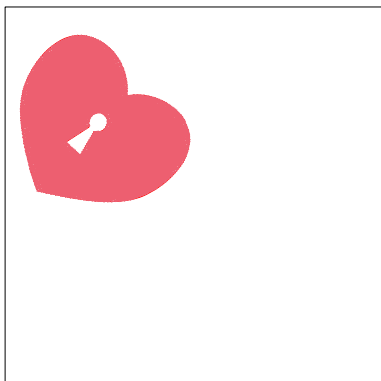
Stop #: 4  
Code: 9  
Name:  
Chart: Wilcom  
Stitches: 264  
Thread used: 4.56ft



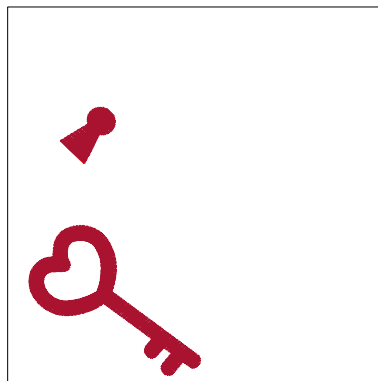
Stop #: 5  
Code: 14  
Name:  
Chart: Wilcom  
Stitches: 487  
Thread used: 10.43ft



Stop #: 6  
Code: 7  
Name:  
Chart: Wilcom  
Stitches: 1,075  
Thread used: 19.25ft



Stop #: 7  
Code: 1  
Name:  
Chart: Wilcom  
Stitches: 2,631  
Thread used: 56.20ft



Stop #: 8  
Code: 7  
Name:  
Chart: Wilcom  
Stitches: 1,290  
Thread used: 25.46ft