

Michaels®

Embroidery Design
Sewing Information

Production Worksheet

Wilcom TrueSizer

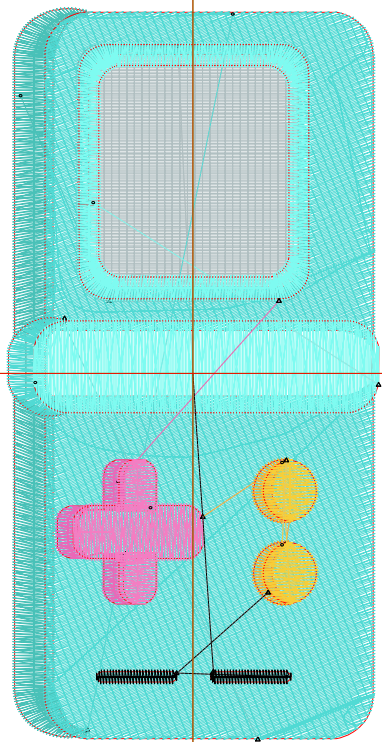


Design: **Retro Game**

Title: **Retro Game**

Stitches: 12,192
 Height: 3.81 in
 Width: 1.94 in
 Colors: 9
 Colorway: Colorway 1
 Zoom: 1:1

Machine format: Tajima
 Color changes: 8
 Stops: 9
 Trims: 14
 Auto fabric: Pure Cotton
 Required stabilizer: Topping:
 Backing: Tear Away x 2
 Appliqués: 0
 Left: 24.6 mm
 Right: 24.6 mm
 Up: 48.4 mm
 Down: 48.4 mm
 EndX: 0.00 in
 EndY: 0.00 in
 Area: 7.38 in²
 Max stitch: 11.0 mm
 Min stitch: 0.3 mm
 Max jump: 6.9 mm
 Total thread: 258.22ft
 Total bobbin: 103.86ft



Stop Sequence:

| # | # | Color | St. | Code | Name | Chart |
|----|---|-------|-------|------|-------------|--------|
| 1. | 7 | █ | 1,913 | 16 | Pastel Blue | Wilcom |
| 2. | 6 | █ | 859 | 14 | Grey | Wilcom |
| 3. | 3 | █ | 6,325 | 11 | Dark Brown | Wilcom |
| 4. | 4 | █ | 2,045 | 12 | Powder Blue | Wilcom |
| 5. | 8 | █ | 227 | 24 | Ocean Green | Wilcom |
| 6. | 9 | █ | 295 | 27 | Turquoise | Wilcom |
| 7. | 1 | █ | 196 | 3 | Green | Wilcom |
| 8. | 2 | █ | 161 | 4 | Yellow | Wilcom |
| 9. | 5 | █ | 169 | 13 | Black | Wilcom |

Color Film

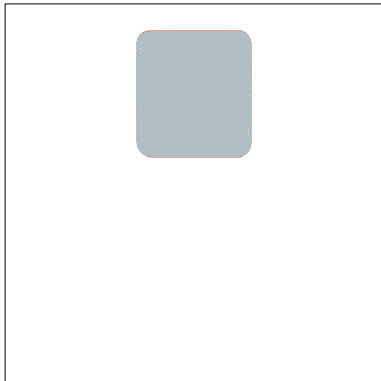
Wilcom TrueSizer



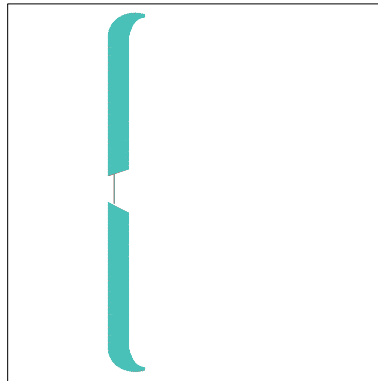
Design: **Retro Game**

Title: **Retro Game**

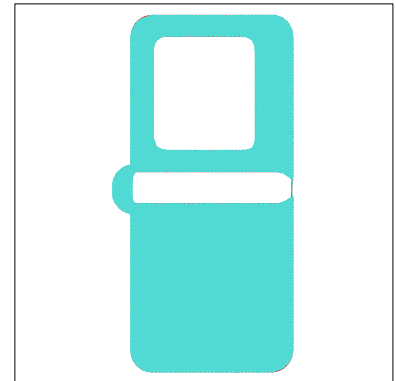
Stitches: 12,192
Height: 3.81 in
Width: 1.94 in
Colors: 9
Colorway: Colorway 1
Zoom: 0.49



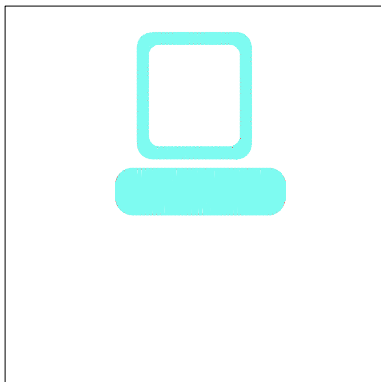
Stop #: 1
Code: 16
Name: Pastel Blue
Chart: Wilcom
Stitches: 1,913
Thread used: 41.81ft



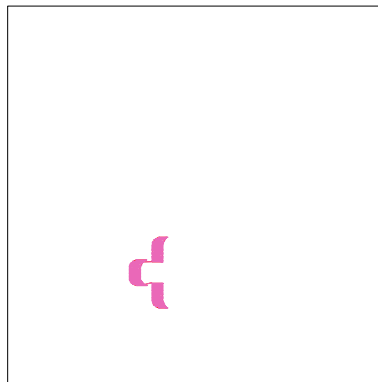
Stop #: 2
Code: 14
Name: Grey
Chart: Wilcom
Stitches: 859
Thread used: 21.42ft



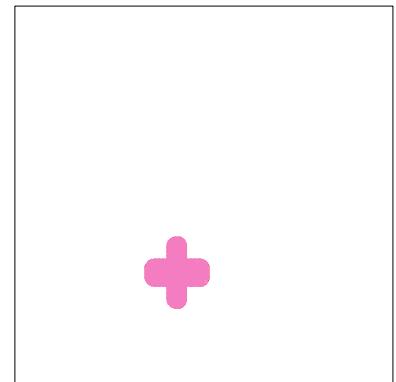
Stop #: 3
Code: 11
Name: Dark Brown
Chart: Wilcom
Stitches: 6,325
Thread used: 129.51ft



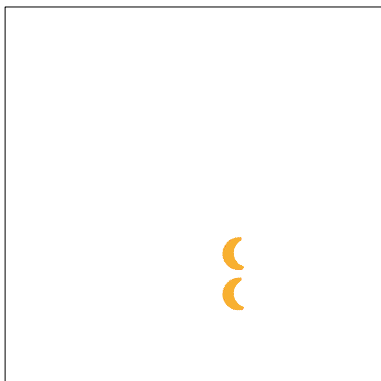
Stop #: 4
Code: 12
Name: Powder Blue
Chart: Wilcom
Stitches: 2,045
Thread used: 41.32ft



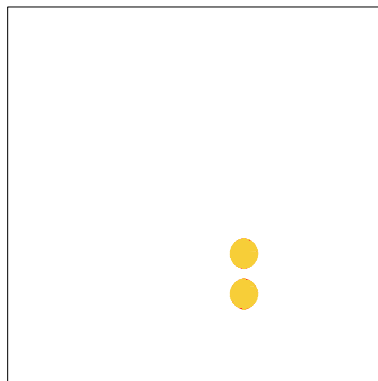
Stop #: 5
Code: 24
Name: Ocean Green
Chart: Wilcom
Stitches: 227
Thread used: 3.75ft



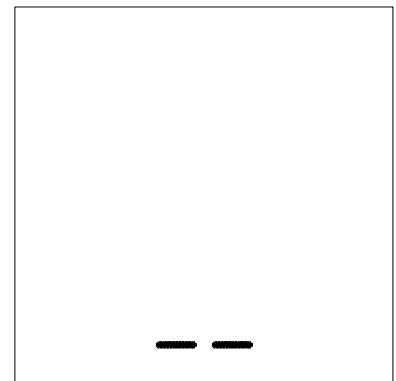
Stop #: 6
Code: 27
Name: Turquoise
Chart: Wilcom
Stitches: 295
Thread used: 8.18ft



Stop #: 7
Code: 3
Name: Green
Chart: Wilcom
Stitches: 196
Thread used: 2.95ft



Stop #: 8
Code: 4
Name: Yellow
Chart: Wilcom
Stitches: 161
Thread used: 4.04ft



Stop #: 9
Code: 13
Name: Black
Chart: Wilcom
Stitches: 169
Thread used: 2.30ft