

Michaels®

Embroidery Design
Sewing Information

Production Worksheet

Wilcom TrueSizer



Design: **BUTTERFLY**

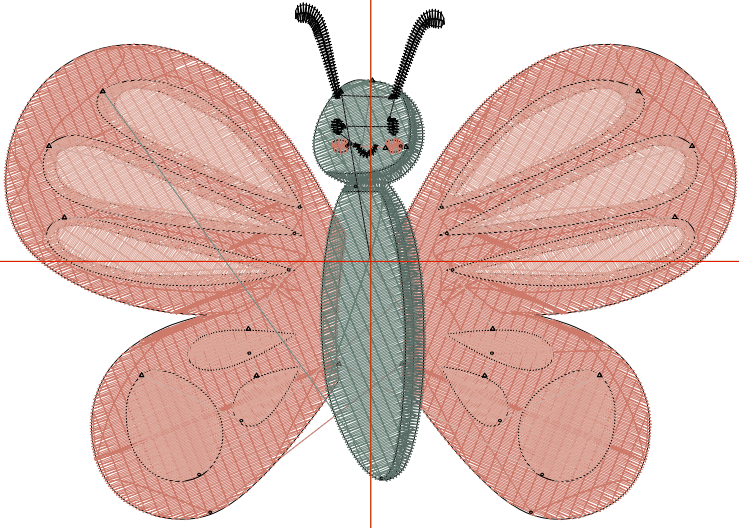
Title: **BUTTERFLY**

Stitches: 13,302
 Height: 2.69 in
 Width: 3.82 in
 Colors: 5
 Colorway: Madeira Classic 40
 Zoom: 1:1

Machine format: Tajima
 Color changes: 5
 Stops: 6
 Trims: 23
 Auto fabric: Pure Cotton
 Required stabilizer: Topping:
 Backing: Tear Away x 2
 Appliqués: 0
 Left: 48.5 mm
 Right: 48.5 mm
 Up: 34.2 mm
 Down: 34.2 mm
 EndX: 0.00 in
 EndY: 0.00 in
 Area: 10.27 in²
 Max stitch: 6.7 mm
 Min stitch: 0.3 mm
 Max jump: 6.7 mm
 Total thread: 249.53ft
 Total bobbin: 94.98ft

Stop Sequence:

#	#	Color	St.	Code	Name	Chart
1.	6		7,046	1309		Madeira Classic 40
2.	1		4,218	1103		Madeira Classic 40
3.	11		1,173	1033		Madeira Classic 40
4.	12		472	1191		Madeira Classic 40
5.	6		61	1309		Madeira Classic 40
6.	14		330	1000	Emerald Black	Madeira Classic 40



Color Film

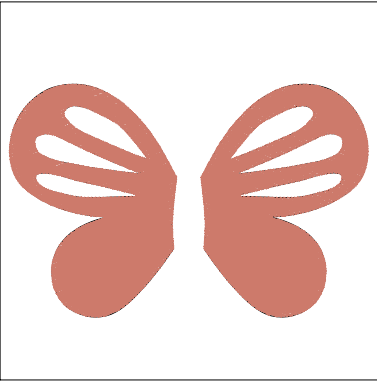
Wilcom TrueSizer



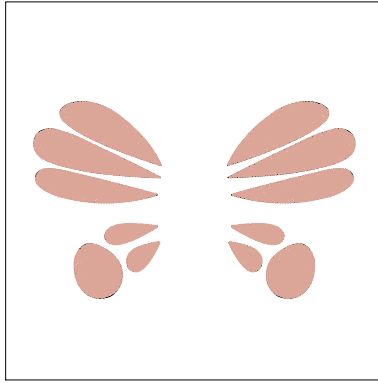
Design: **BUTTERFLY**

Title: **BUTTERFLY**

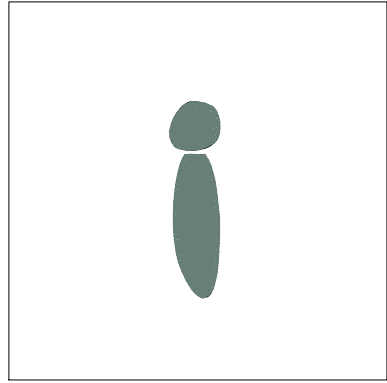
Stitches: 13,302
Height: 2.69 in
Width: 3.82 in
Colors: 5
Colorway: Madeira Classic 40
Zoom: 0.49



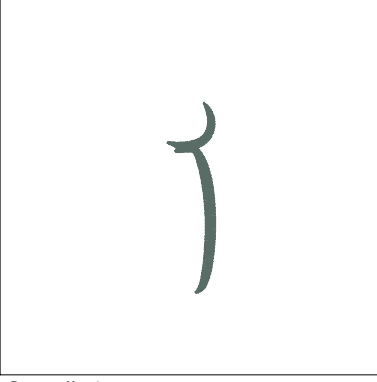
Stop #: 1
Code: 1309
Name:
Chart: Madeira Classic 40
Stitches: 7,046
Thread used: 137.07ft



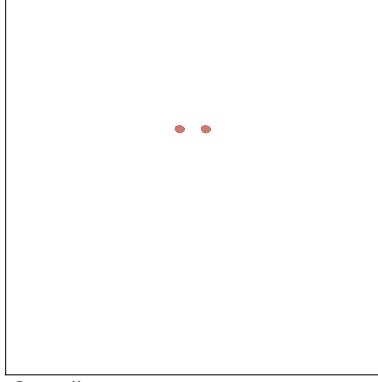
Stop #: 2
Code: 1103
Name:
Chart: Madeira Classic 40
Stitches: 4,218
Thread used: 75.79ft



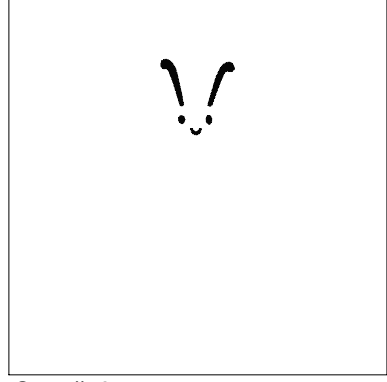
Stop #: 3
Code: 1033
Name:
Chart: Madeira Classic 40
Stitches: 1,173
Thread used: 22.43ft



Stop #: 4
Code: 1191
Name:
Chart: Madeira Classic 40
Stitches: 472
Thread used: 7.62ft



Stop #: 5
Code: 1309
Name:
Chart: Madeira Classic 40
Stitches: 61
Thread used: 0.69ft



Stop #: 6
Code: 1000
Name: Emerald Black
Chart: Madeira Classic 40
Stitches: 330
Thread used: 3.96ft