

Michaels®

Embroidery Design
Sewing Information

Production Worksheet

Wilcom TrueSizer

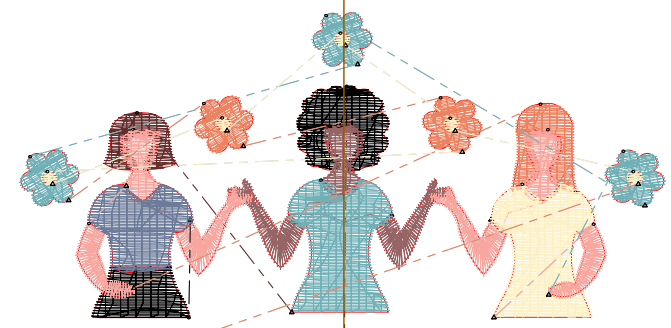


Stitches: 10,309
 Height: 3.81 in
 Width: 3.47 in
 Colors: 8
 Colorway: Colorway 1
 Zoom: 1:1

Design: **Women thriving together**

Title: **Women thriving together**

Machine format: Tajima
 Color changes: 17
 Stops: 18
 Trims: 34
 Auto fabric: Fabric Name
 Required stabilizer: Stabilizer
 Appliqués: 0
 Left: 44.0 mm
 Right: 44.0 mm
 Up: 48.4 mm
 Down: 48.4 mm
 EndX: 0.00 in
 EndY: 0.00 in
 Area: 13.21 in²
 Max stitch: 9.3 mm
 Min stitch: 0.3 mm
 Max jump: 6.9 mm
 Total thread: 169.71ft
 Total bobbin: 56.98ft



**WOMEN
 THRIVING
 TOGETHER**

Stop Sequence:

#	#	Color	St.	Code	Name	Chart
1.	20	Black	375		Black	Royal
2.	30	D Brown	523		D Brown	Royal
3.	9	L Blue	506		L Blue	Royal
4.	29	M Brown	210		M Brown	Royal
5.	31	Khaki	349		Khaki	Royal
6.	20	Black	179		Black	Royal
7.	13	D Cyan	339		D Cyan	Royal
8.	31	Khaki	113		Khaki	Royal
9.	10	D Purple	294		D Purple	Royal
10.	31	Khaki	349		Khaki	Royal
11.	26	Lemon-Yellow	506		Lemon-Yellow	Royal
12.	31	Khaki	117		Khaki	Royal
13.	9	L Blue	615		L Blue	Royal
14.	10	D Purple	418		D Purple	Royal
15.	26	Lemon-Yellow	120		Lemon-Yellow	Royal
16.	10	D Purple	1,225		D Purple	Royal
17.	9	L Blue	2,586		L Blue	Royal
18.	10	D Purple	1,483		D Purple	Royal