

Michaels®

Embroidery Design  
Sewing Information

# Production Worksheet

Wilcom TrueSizer

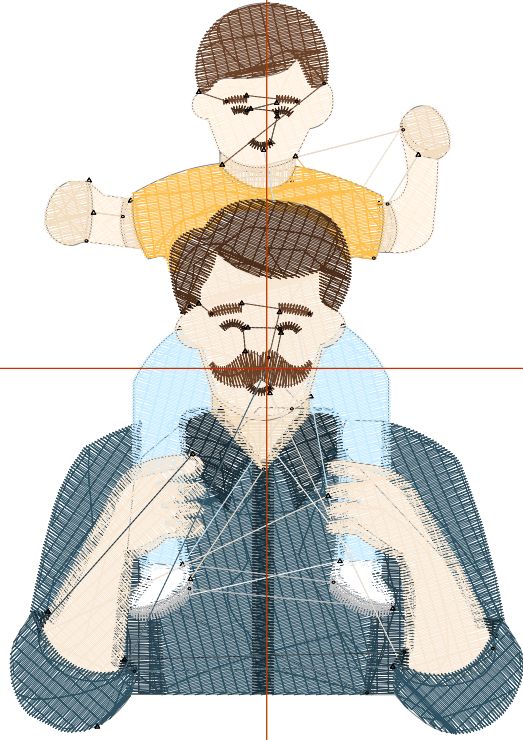


Design: **Man Holding Child**

Title: **Man Holding Child**

Stitches: 12,553  
 Height: 3.81 in  
 Width: 2.68 in  
 Colors: 13  
 Colorway: Colorway 1  
 Zoom: 1:1

Machine format: Tajima  
 Color changes: 18  
 Stops: 19  
 Trims: 39  
 Auto fabric: Pure Cotton  
 Required stabilizer: Topping:  
 Backing: Tear Away x 2  
 Appliqués: 0  
 Left: 34.0 mm  
 Right: 34.0 mm  
 Up: 48.4 mm  
 Down: 48.4 mm  
 EndX: 0.00 in  
 EndY: 0.00 in  
 Area: 10.19 in<sup>2</sup>  
 Max stitch: 8.0 mm  
 Min stitch: 0.2 mm  
 Max jump: 6.9 mm  
 Total thread: 221.95ft  
 Total bobbin: 79.02ft



Stop Sequence:

#	#	Color	St.	Code	Name	Chart
1.	19	■	2,571	19	Deep Navy Blue	Wilcom
2.	23	■	636	23	Light BlueGreen	Wilcom
3.	1	■	655	1	Blue	Wilcom
4.	53	■	879	53	Faded Pink	Wilcom
5.	45	■	615	45	Gold	Wilcom
6.	4	■	687	4	Yellow	Wilcom
7.	6	■	457	6	Brick Red	Wilcom
8.	44	■	109	44	Red Brown	Wilcom
9.	22	■	1,105	22	Ice Blue	Wilcom
10.	15	■	265	15	White	Wilcom
11.	14	■	149	14	Grey	Wilcom
12.	45	■	237	45	Gold	Wilcom
13.	47	■	766	47	Light Orange	Wilcom
14.	35	■	587	35	Murky Green	Wilcom
15.	6	■	237	6	Brick Red	Wilcom
16.	44	■	130	44	Red Brown	Wilcom
17.	47	■	1,602	47	Light Orange	Wilcom
18.	1	■	131	1	Blue	Wilcom
19.	19	■	733	19	Deep Navy Blue	Wilcom

# Color Film

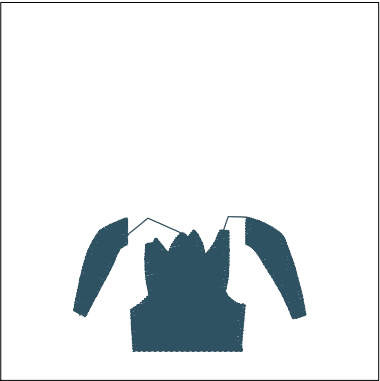
Wilcom TrueSizer



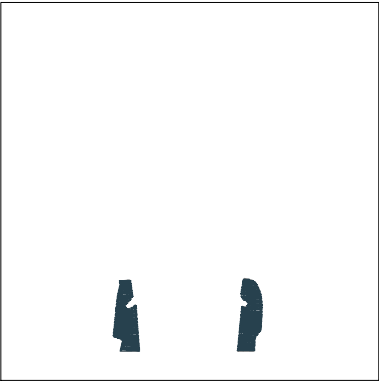
Design: **Man Holding Child**

Title: **Man Holding Child**

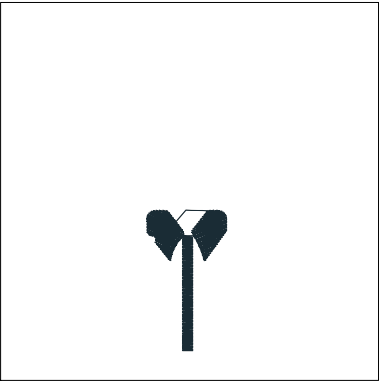
Stitches: 12,553  
Height: 3.81 in  
Width: 2.68 in  
Colors: 13  
Colorway: Colorway 1  
Zoom: 0.49



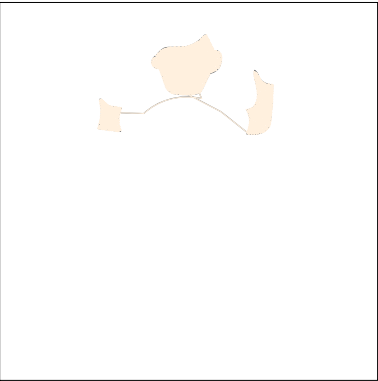
Stop #: 1  
Code: 19  
Name: Deep Navy Blue  
Chart: Wilcom  
Stitches: 2,571  
Thread used: 48.82ft



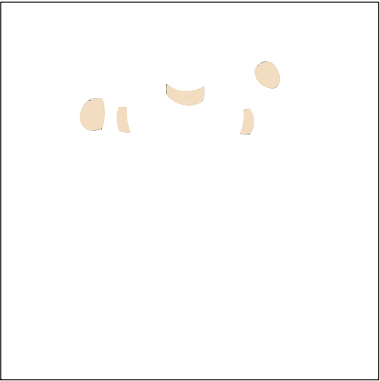
Stop #: 2  
Code: 23  
Name: Light BlueGreen  
Chart: Wilcom  
Stitches: 636  
Thread used: 10.00ft



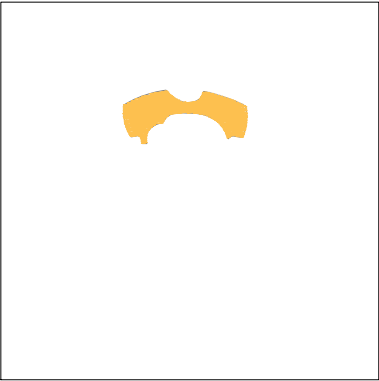
Stop #: 3  
Code: 1  
Name: Blue  
Chart: Wilcom  
Stitches: 655  
Thread used: 11.28ft



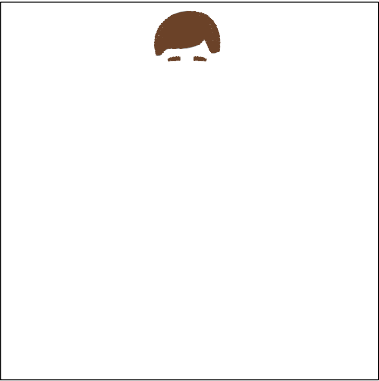
Stop #: 4  
Code: 53  
Name: Faded Pink  
Chart: Wilcom  
Stitches: 879  
Thread used: 14.87ft



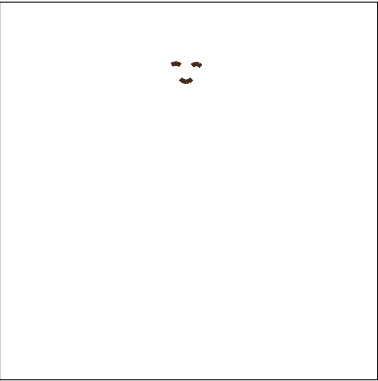
Stop #: 5  
Code: 45  
Name: Gold  
Chart: Wilcom  
Stitches: 615  
Thread used: 8.66ft



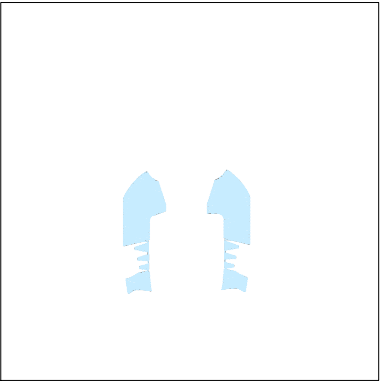
Stop #: 6  
Code: 4  
Name: Yellow  
Chart: Wilcom  
Stitches: 687  
Thread used: 12.26ft



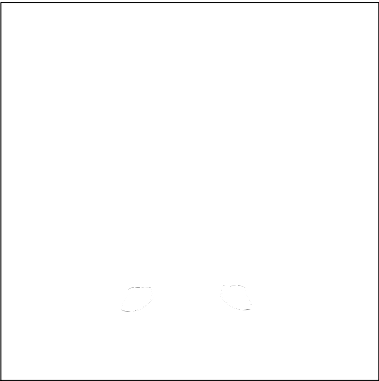
Stop #: 7  
Code: 6  
Name: Brick Red  
Chart: Wilcom  
Stitches: 457  
Thread used: 7.65ft



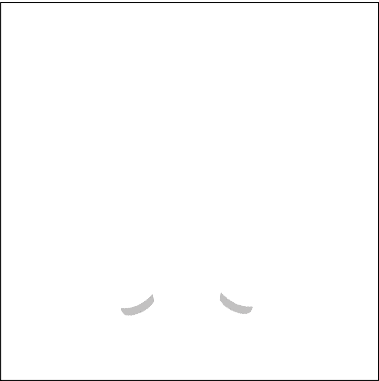
Stop #: 8  
Code: 44  
Name: Red Brown  
Chart: Wilcom  
Stitches: 109  
Thread used: 1.12ft



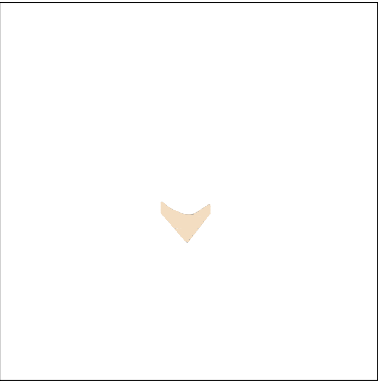
Stop #: 9  
Code: 22  
Name: Ice Blue  
Chart: Wilcom  
Stitches: 1,105  
Thread used: 18.12ft



Stop #: 10  
Code: 15  
Name: White  
Chart: Wilcom  
Stitches: 265  
Thread used: 4.16ft



Stop #: 11  
Code: 14  
Name: Grey  
Chart: Wilcom  
Stitches: 149  
Thread used: 2.06ft



Stop #: 12  
Code: 45  
Name: Gold  
Chart: Wilcom  
Stitches: 237  
Thread used: 3.61ft

**Color Film**

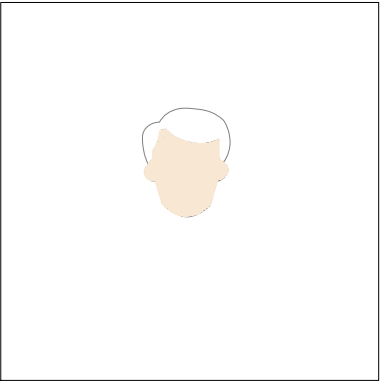
Wilcom TrueSizer



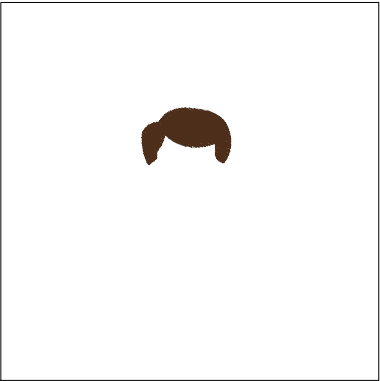
Stitches: 12,553  
Height: 3.81 in  
Width: 2.68 in  
Colors: 13  
Colorway: Colorway 1  
Zoom: 0.49

Design: **Man Holding Child**

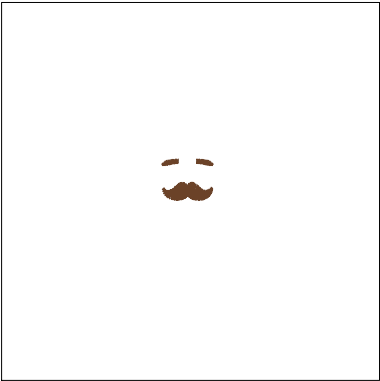
Title: **Man Holding Child**



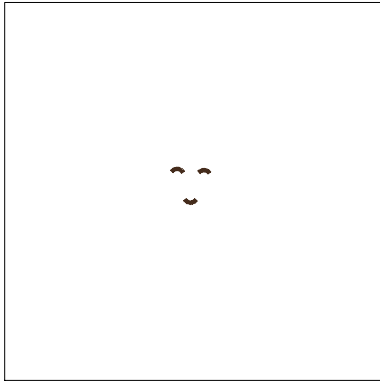
Stop #: 13  
Code: 47  
Name: Light Orange  
Chart: Wilcom  
Stitches: 766  
Thread used: 15.07ft



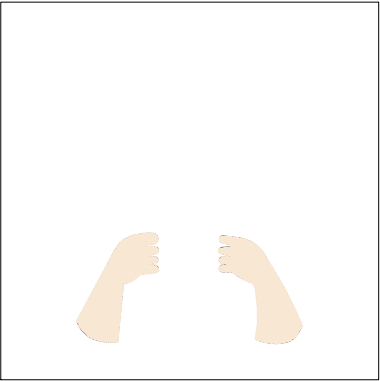
Stop #: 14  
Code: 35  
Name: Murky Green  
Chart: Wilcom  
Stitches: 587  
Thread used: 10.35ft



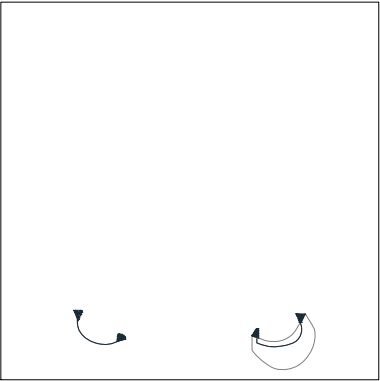
Stop #: 15  
Code: 6  
Name: Brick Red  
Chart: Wilcom  
Stitches: 237  
Thread used: 3.53ft



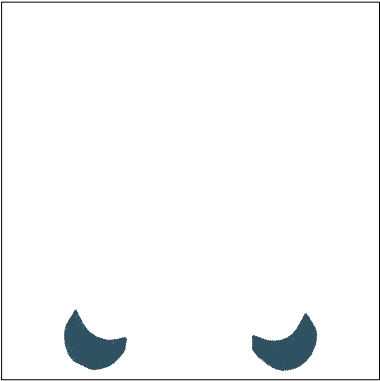
Stop #: 16  
Code: 44  
Name: Red Brown  
Chart: Wilcom  
Stitches: 130  
Thread used: 1.36ft



Stop #: 17  
Code: 47  
Name: Light Orange  
Chart: Wilcom  
Stitches: 1,602  
Thread used: 28.22ft



Stop #: 18  
Code: 1  
Name: Blue  
Chart: Wilcom  
Stitches: 131  
Thread used: 1.62ft



Stop #: 19  
Code: 19  
Name: Deep Navy Blue  
Chart: Wilcom  
Stitches: 733  
Thread used: 12.94ft