

Michaels®

Embroidery Design
Sewing Information

Production Worksheet

Wilcom TrueSizer



Design: **Western Big Car**

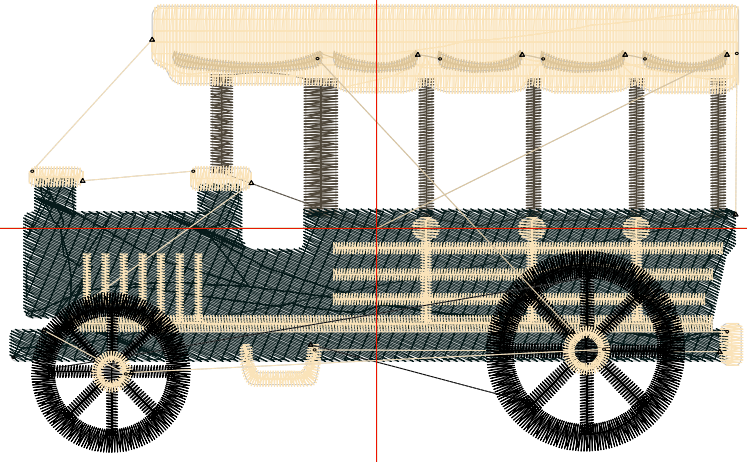
Title: **Western Big Car**

Stitches: 11,998
 Height: 2.33 in
 Width: 3.82 in
 Colors: 5
 Colorway: Colorway 1
 Zoom: 1:1

Machine format: Tajima
 Color changes: 5
 Stops: 6
 Trims: 16
 Auto fabric: Pure Cotton
 Required stabilizer: Topping:
 Backing: Tear Away
 x 2
 Appliqués: 0
 Left: 48.5 mm
 Right: 48.5 mm
 Up: 29.6 mm
 Down: 29.6 mm
 EndX: 0.00 in
 EndY: 0.00 in
 Area: 8.91 in²
 Max stitch: 10.8 mm
 Min stitch: 0.3 mm
 Max jump: 6.9 mm
 Total thread: 209.49ft
 Total bobbin: 76.32ft

Stop Sequence:

#	#	Color	St.	Code	Name	Chart
1.	2	■	839	6		Wilcom
2.	5	■	3,877	26		Wilcom
3.	1	■	4,487	4		Wilcom
4.	4	■	1,985	13	Black	Wilcom
5.	1	■	249	4		Wilcom
6.	3	■	559	12		Wilcom



Color Film

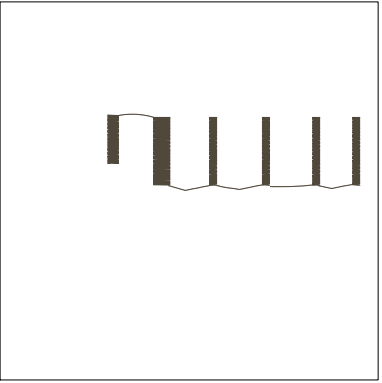
Wilcom TrueSizer



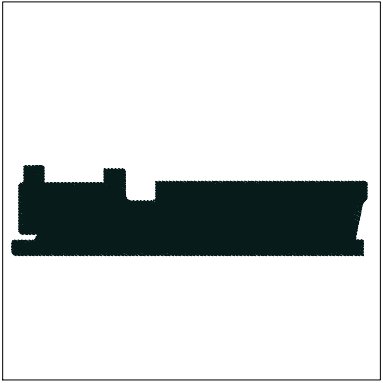
Design: **Western Big Car**

Title: **Western Big Car**

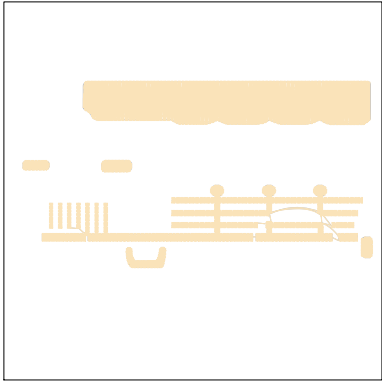
Stitches: 11,998
Height: 2.33 in
Width: 3.82 in
Colors: 5
Colorway: Colorway 1
Zoom: 0.49



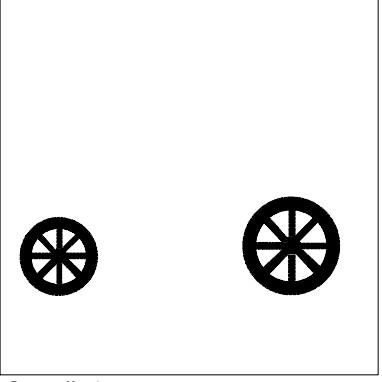
Stop #: 1
Code: 6
Name:
Chart: Wilcom
Stitches: 839
Thread used: 13.91ft



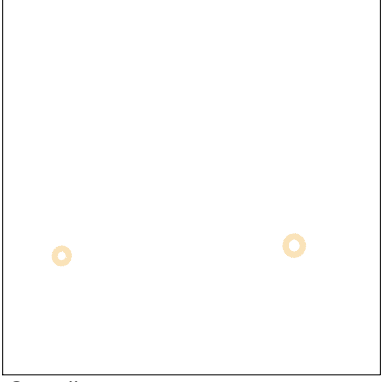
Stop #: 2
Code: 26
Name:
Chart: Wilcom
Stitches: 3,877
Thread used: 77.06ft



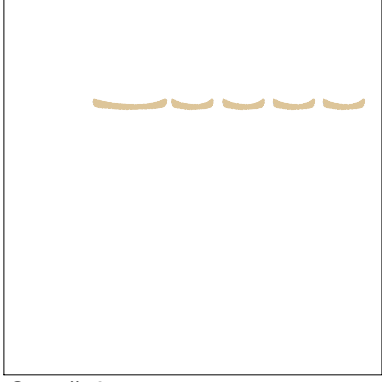
Stop #: 3
Code: 4
Name:
Chart: Wilcom
Stitches: 4,487
Thread used: 71.72ft



Stop #: 4
Code: 13
Name: Black
Chart: Wilcom
Stitches: 1,985
Thread used: 34.59ft



Stop #: 5
Code: 4
Name:
Chart: Wilcom
Stitches: 249
Thread used: 3.12ft



Stop #: 6
Code: 12
Name:
Chart: Wilcom
Stitches: 559
Thread used: 7.12ft