

Michaels[®]

**Embroidery Design
Sewing Information**

Production Worksheet

Wilcom TrueSizer

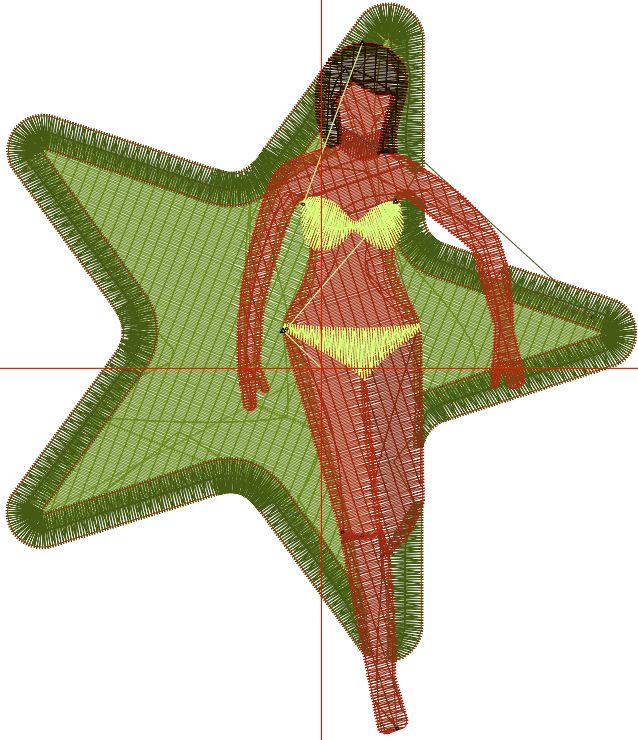


Design: **Woman on a Star Float**

Title: **Woman on a Star Float**

Stitches: 10,530
 Height: 3.81 in
 Width: 3.29 in
 Colors: 8
 Colorway: Colorway 1
 Zoom: 1:1

Machine format: Tajima
 Color changes: 7
 Stops: 8
 Trims: 9
 Auto fabric: Pure Cotton
 Required stabilizer: Topping:
 Backing: Tear Away
 x 2
 Appliqués: 0
 Left: 41.8 mm
 Right: 41.8 mm
 Up: 48.3 mm
 Down: 48.3 mm
 EndX: 0.00 in
 EndY: 0.00 in
 Area: 12.52 in²
 Max stitch: 7.0 mm
 Min stitch: 0.4 mm
 Max jump: 6.3 mm
 Total thread: 208.62ft
 Total bobbin: 81.13ft



Stop Sequence:

#	#	Color	St.	Code	Name	Chart
1.	34	■	3,871	34	Wilcom	
2.	1	■	2,770	1	Wilcom	
3.	28	■	476	28	Wilcom	
4.	29	■	401	29	Wilcom	
5.	36	■	2,280	36	Wilcom	
6.	6	■	54	6	Wilcom	
7.	13	■	360	13	Wilcom	
8.	40	■	316	40	Wilcom	

Color Film

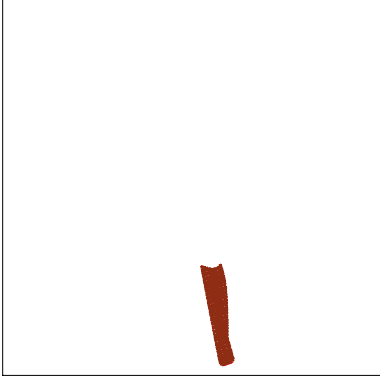
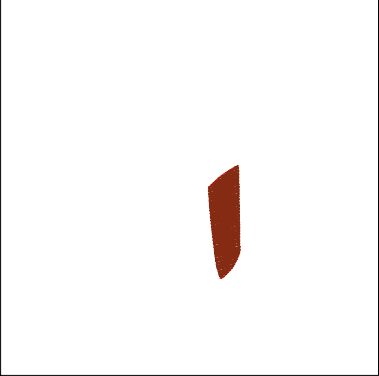
Wilcom TrueSizer



Stitches: 10,530
Height: 3.81 in
Width: 3.29 in
Colors: 8
Colorway: Colorway 1
Zoom: 0.49

Design: **Woman on a Star Float**

Title: **Woman on a Star Float**

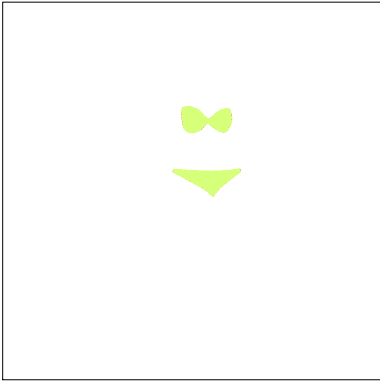
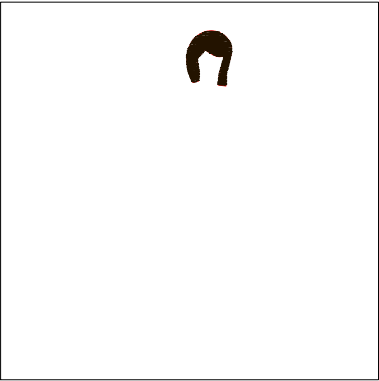
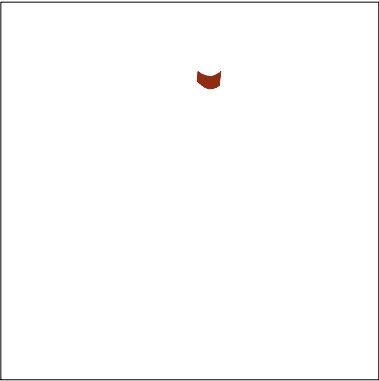
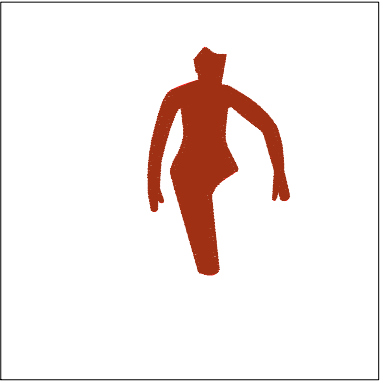


Stop #: 1
Code: 34
Name:
Chart: Wilcom
Stitches: 3,871
Thread used: 76.55ft

Stop #: 2
Code: 1
Name:
Chart: Wilcom
Stitches: 2,770
Thread used: 62.01ft

Stop #: 3
Code: 28
Name:
Chart: Wilcom
Stitches: 476
Thread used: 8.41ft

Stop #: 4
Code: 29
Name:
Chart: Wilcom
Stitches: 401
Thread used: 6.36ft



Stop #: 5
Code: 36
Name:
Chart: Wilcom
Stitches: 2,280
Thread used: 39.88ft

Stop #: 6
Code: 6
Name:
Chart: Wilcom
Stitches: 54
Thread used: 1.01ft

Stop #: 7
Code: 13
Name:
Chart: Wilcom
Stitches: 360
Thread used: 5.33ft

Stop #: 8
Code: 40
Name:
Chart: Wilcom
Stitches: 316
Thread used: 6.45ft