

Michaels®

Embroidery Design  
Sewing Information

# Production Worksheet

Wilcom TrueSizer



Design: **Gloves**

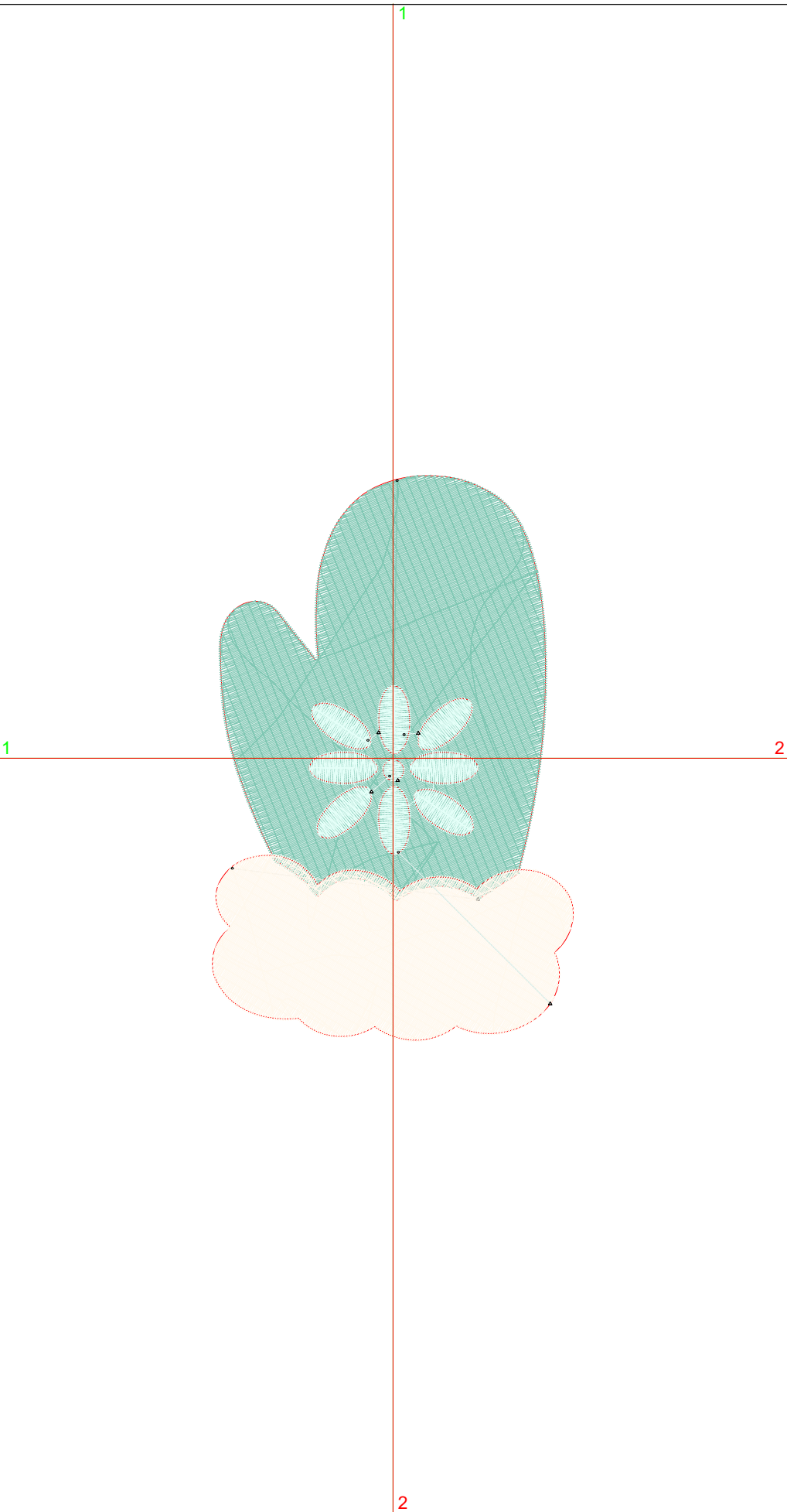
Title: **Gloves**

Stitches: 9,278  
 Height: 3.81 in  
 Width: 2.44 in  
 Colors: 3  
 Colorway: Colorway 1  
 Zoom: 1:1

Machine format: Tajima  
 Color changes: 2  
 Stops: 3  
 Trims: 6  
 Auto fabric: Pure Cotton  
 Required stabilizer: Topping:  
 Backing: Tear Away x 2  
 Appliqués: 0  
 Left: 31.0 mm  
 Right: 31.0 mm  
 Up: 48.4 mm  
 Down: 48.4 mm  
 EndX: 0.00 in  
 EndY: 0.00 in  
 Area: 9.30 in<sup>2</sup>  
 Max stitch: 6.8 mm  
 Min stitch: 0.3 mm  
 Max jump: 6.8 mm  
 Total thread: 203.60ft  
 Total bobbin: 83.99ft

Stop Sequence:

#	#	Color	St.	Code	Name	Chart
1.	31	<span style="color: #4DB6AC;">■</span>	5,432	31	Mint Green	Wilcom
2.	42	<span style="color: #FFF9C4;">■</span>	2,884	42	Pale Yellow	Wilcom
3.	30	<span style="color: #E0F7FA;">■</span>	960	30	Ghost Green	Wilcom



**Color Film**

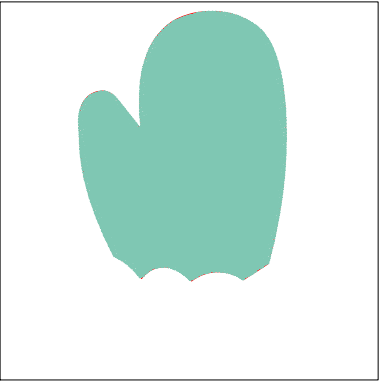
Wilcom TrueSizer



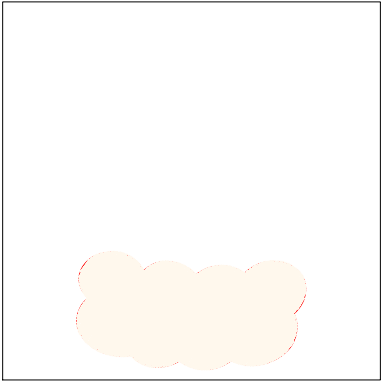
Design: **Gloves**

Title: **Gloves**

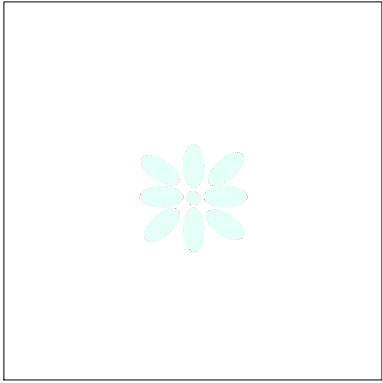
Stitches: 9,278  
Height: 3.81 in  
Width: 2.44 in  
Colors: 3  
Colorway: Colorway 1  
Zoom: 0.49



Stop #: 1  
Code: 31  
Name: Mint Green  
Chart: Wilcom  
Stitches: 5,432  
Thread used: 120.27ft



Stop #: 2  
Code: 42  
Name: Pale Yellow  
Chart: Wilcom  
Stitches: 2,884  
Thread used: 61.70ft



Stop #: 3  
Code: 30  
Name: Ghost Green  
Chart: Wilcom  
Stitches: 960  
Thread used: 20.64ft