

Michaels®

Embroidery Design
Sewing Information

Production Worksheet

Wilcom TrueSizer



Design: **Cactus&Succulents10**

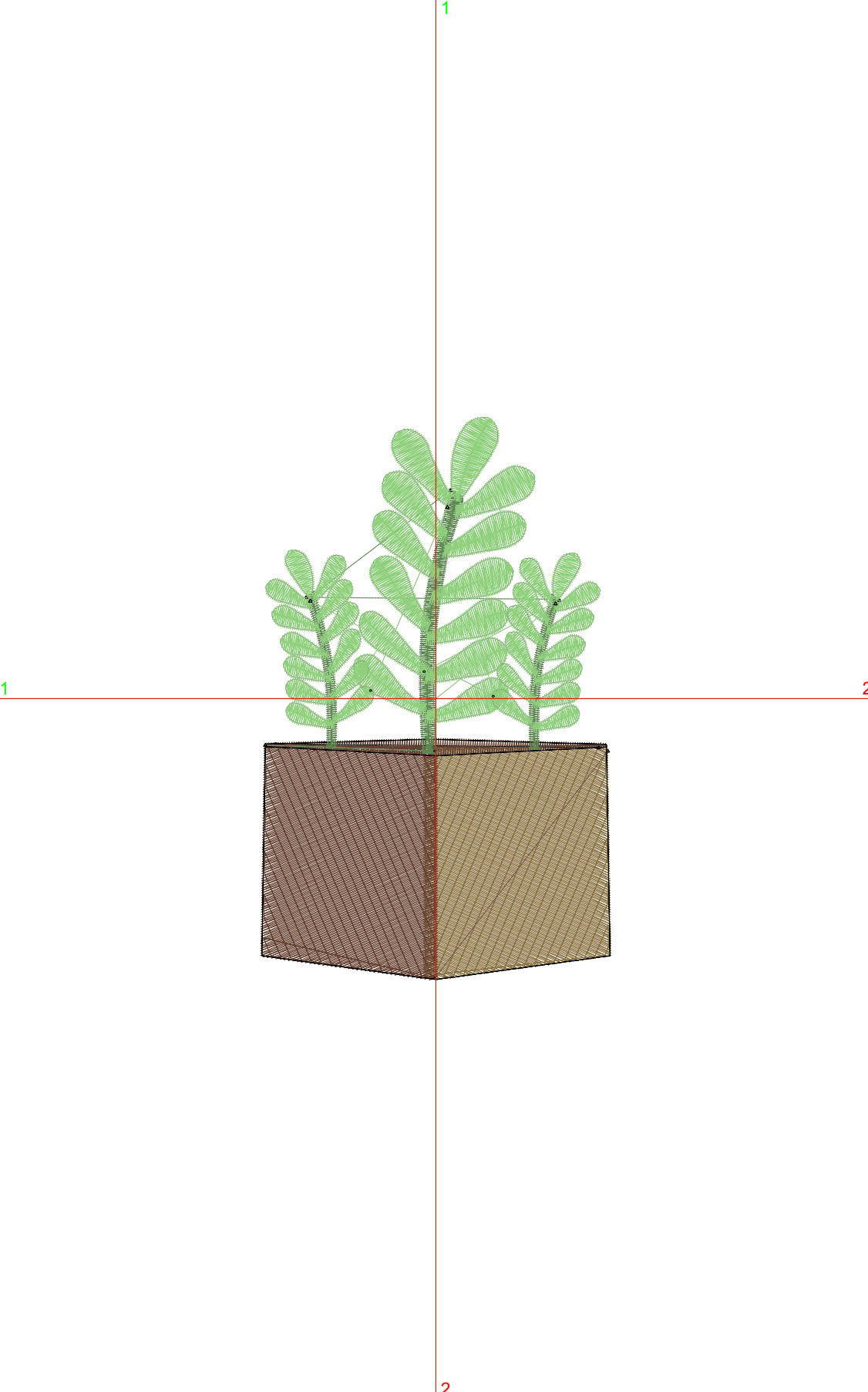
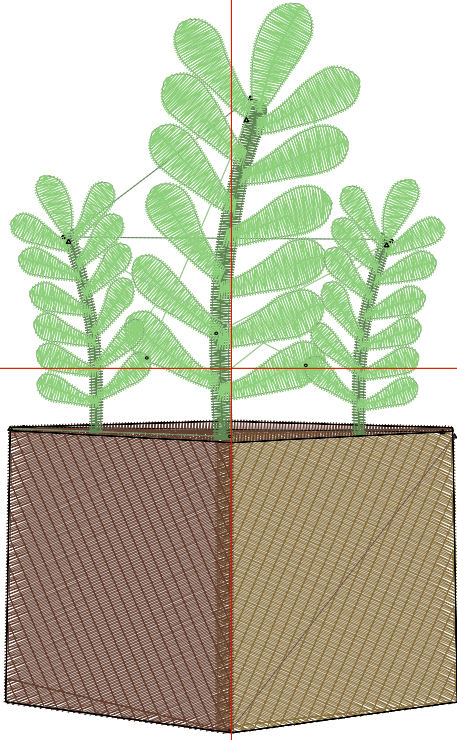
Title: **Cactus&Succulents10**

Stitches: 9,470
 Height: 3.81 in
 Width: 2.37 in
 Colors: 5
 Colorway: Colorway 1
 Zoom: 1:1

Machine format: Tajima
 Color changes: 4
 Stops: 5
 Trims: 10
 Auto fabric: Pure Cotton
 Required stabilizer: Topping:
 Backing: Tear Away
 x 2
 Appliqués: 0
 Left: 30.1 mm
 Right: 30.1 mm
 Up: 48.3 mm
 Down: 48.3 mm
 EndX: 0.00 in
 EndY: 0.00 in
 Area: 9.02 in²
 Max stitch: 6.9 mm
 Min stitch: 0.2 mm
 Max jump: 6.9 mm
 Total thread: 188.23ft
 Total bobbin: 73.75ft

Stop Sequence:

#	#	Color	St.	Code	Name	Chart
1.	5	■	2,172	5		Wilcom
2.	4	■	2,470	4		Wilcom
3.	13	■	351	13	Black	Wilcom
4.	3	■	718	3		Wilcom
5.	2	■	3,757	2		Wilcom



Color Film

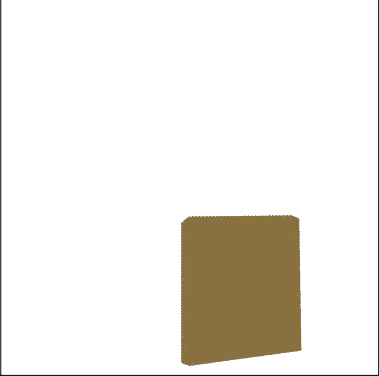
Wilcom TrueSizer



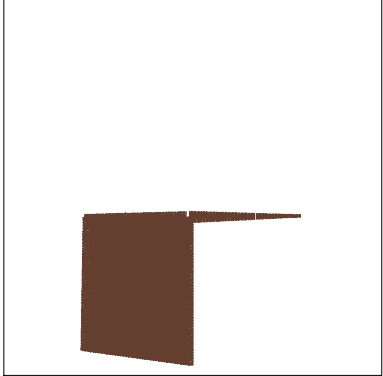
Design: **Cactus&Succulents10**

Title: **Cactus&Succulents10**

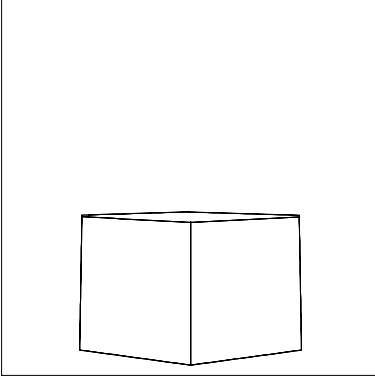
Stitches: 9,470
Height: 3.81 in
Width: 2.37 in
Colors: 5
Colorway: Colorway 1
Zoom: 0.49



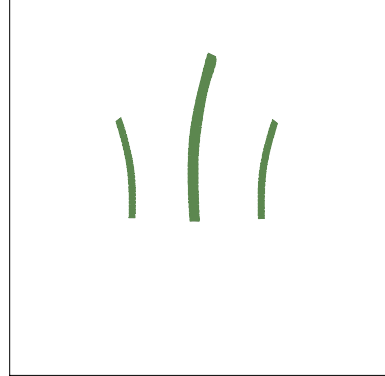
Stop #: 1
Code: 5
Name:
Chart: Wilcom
Stitches: 2,172
Thread used: 46.80ft



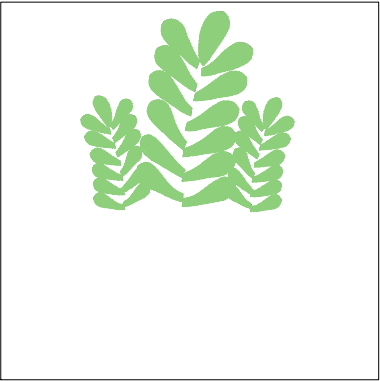
Stop #: 2
Code: 4
Name:
Chart: Wilcom
Stitches: 2,470
Thread used: 50.09ft



Stop #: 3
Code: 13
Name: Black
Chart: Wilcom
Stitches: 351
Thread used: 4.92ft



Stop #: 4
Code: 3
Name:
Chart: Wilcom
Stitches: 718
Thread used: 11.31ft



Stop #: 5
Code: 2
Name:
Chart: Wilcom
Stitches: 3,757
Thread used: 73.47ft