

Michaels®

Embroidery Design
Sewing Information

Production Worksheet

Wilcom TrueSizer



Design: **Cute Green Dino**

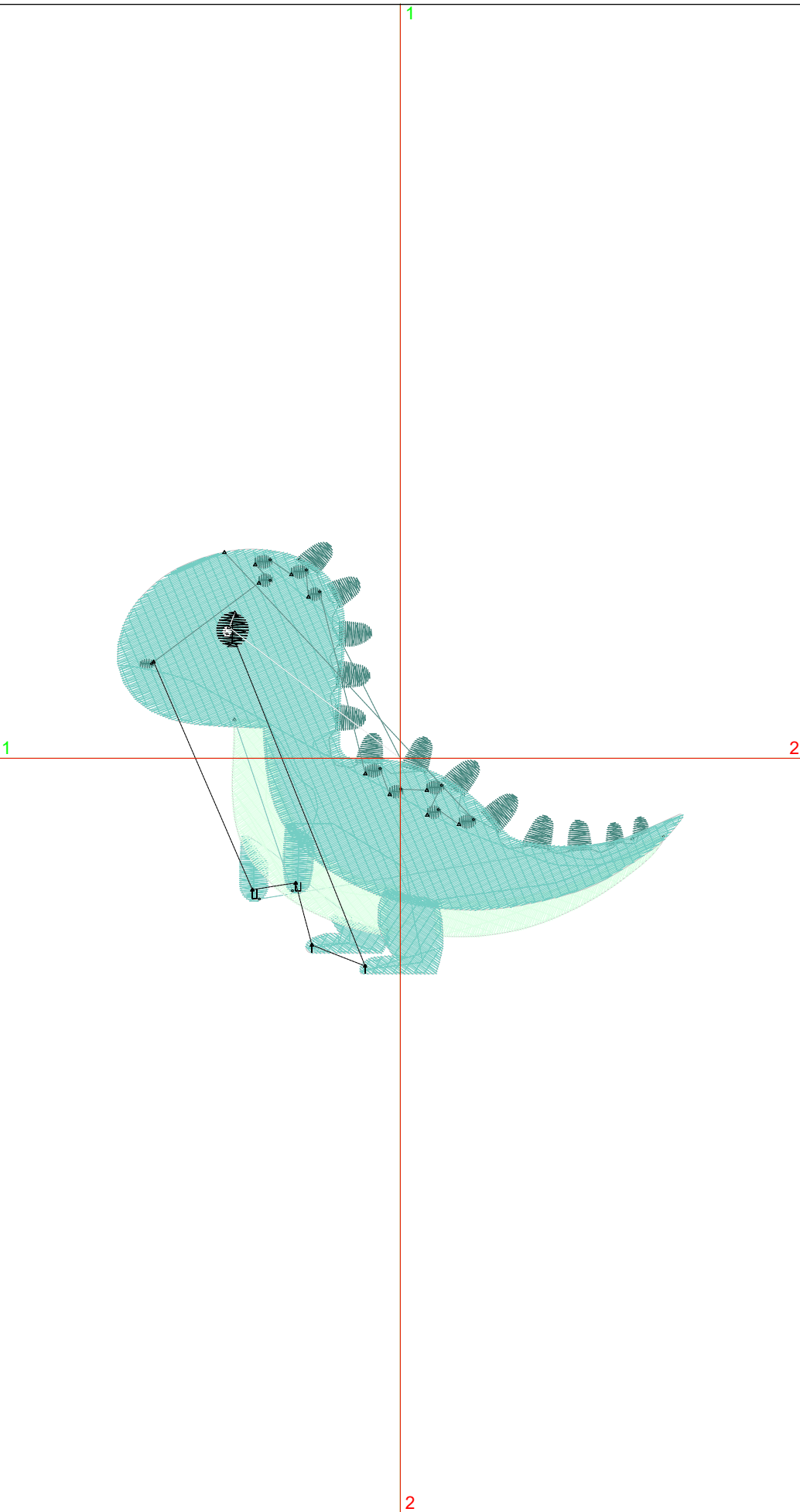
Title: **Cute Green Dino**

Stitches: 7,743
 Height: 2.91 in
 Width: 3.81 in
 Colors: 5
 Colorway: Colorway 1
 Zoom: 1:1

Machine format: Tajima
 Color changes: 6
 Stops: 7
 Trims: 20
 Auto fabric: Pure Cotton
 Required stabilizer: Topping:
 Backing: Tear Away x 2
 Appliqués: 0
 Left: 48.4 mm
 Right: 48.4 mm
 Up: 37.0 mm
 Down: 36.9 mm
 EndX: 0.00 in
 EndY: 0.00 in
 Area: 11.09 in²
 Max stitch: 6.9 mm
 Min stitch: 0.2 mm
 Max jump: 6.9 mm
 Total thread: 146.34ft
 Total bobbin: 55.25ft

Stop Sequence:

#	#	Color	St.	Code	Name	Chart
1.	2	■	656	3	Green	Wilcom
2.	1	■	332	2		Wilcom
3.	5	■	1,605	34	Moon Green	Wilcom
4.	1	■	4,683	2		Wilcom
5.	2	■	311	3	Green	Wilcom
6.	3	■	128	13	Black	Wilcom
7.	4	■	26	15	White	Wilcom



Color Film

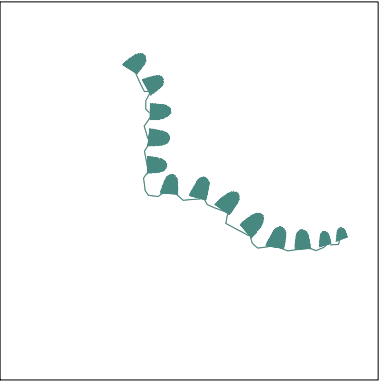
Wilcom TrueSizer



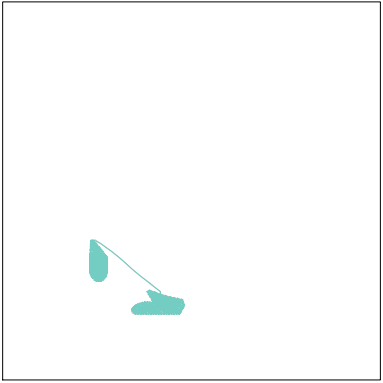
Design: **Cute Green Dino**

Title: **Cute Green Dino**

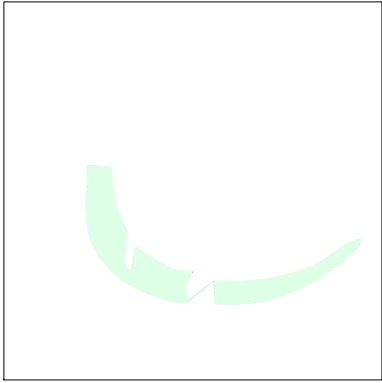
Stitches: 7,743
Height: 2.91 in
Width: 3.81 in
Colors: 5
Colorway: Colorway 1
Zoom: 0.49



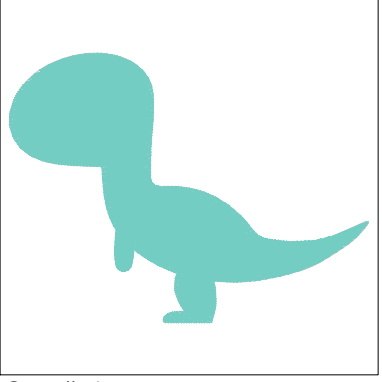
Stop #: 1
Code: 3
Name: Green
Chart: Wilcom
Stitches: 656
Thread used: 12.70ft



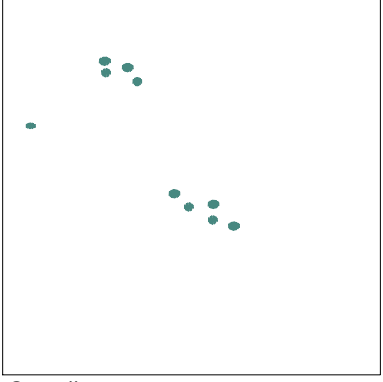
Stop #: 2
Code: 2
Name:
Chart: Wilcom
Stitches: 332
Thread used: 5.51ft



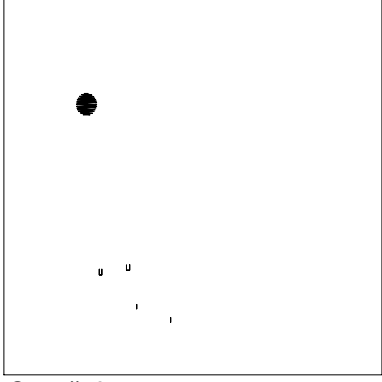
Stop #: 3
Code: 34
Name: Moon Green
Chart: Wilcom
Stitches: 1,605
Thread used: 27.02ft



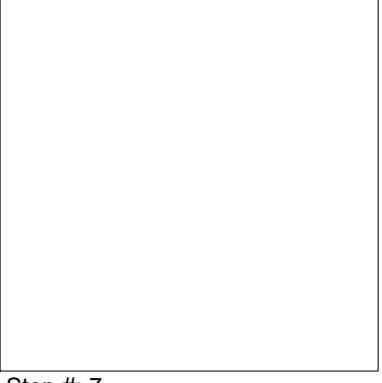
Stop #: 4
Code: 2
Name:
Chart: Wilcom
Stitches: 4,683
Thread used: 93.04ft



Stop #: 5
Code: 3
Name: Green
Chart: Wilcom
Stitches: 311
Thread used: 3.70ft



Stop #: 6
Code: 13
Name: Black
Chart: Wilcom
Stitches: 128
Thread used: 1.81ft



Stop #: 7
Code: 15
Name: White
Chart: Wilcom
Stitches: 26
Thread used: 0.27ft