

Michaels®

Embroidery Design
Sewing Information

Production Worksheet

Wilcom TrueSizer



Design: **Cancer Zodiac Sign**

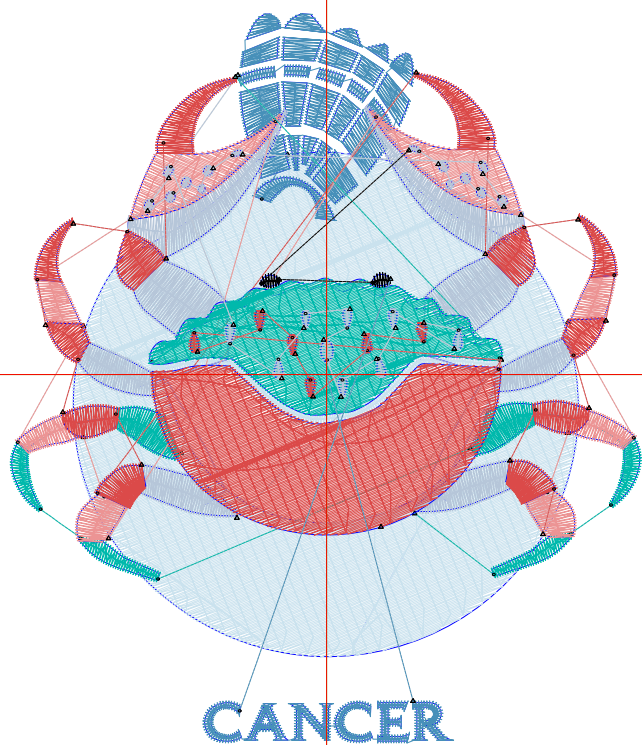
Title: **Cancer Zodiac Sign**

Stitches: 13,440
Height: 3.80 in
Width: 3.29 in
Colors: 7
Colorway: Colorway 1
Zoom: 1:1

Machine format: Tajima
Color changes: 10
Stops: 11
Trims: 57
Auto fabric: Custom Fabric
Required stabilizer: Topping:
Backing: Tear Away x 2
Appliqués: 0
Left: 41.9 mm
Right: 41.7 mm
Up: 47.7 mm
Down: 48.7 mm
EndX: 0.00 in
EndY: 0.00 in
Area: 12.49 in²
Max stitch: 10.5 mm
Min stitch: 0.3 mm
Max jump: 7.0 mm
Total thread: 262.24ft
Total bobbin: 101.00ft

Stop Sequence:

#	#	Color	St.	Code	Name	Chart
1.	33		4,811	Gray	PMS 430	Madeira Classic 1118
2.	5		942	Dark Blue	PMS 295	Madeira Classic 1376
3.	32		1,255	Dark Gray	PMS 431	Madeira Classic 1041
4.	26		568	Light sea green	PMS 3255	Madeira Classic 1299
5.	31		1,046	Light Pink	PMS 210	Madeira Classic 1321
6.	35		980	Red	PMS 186	Madeira Classic 1147
7.	26		1,089	Light sea green	PMS 3255	Madeira Classic 1299
8.	35		1,526	Red	PMS 186	Madeira Classic 1147
9.	32		499	Dark Gray	PMS 431	Madeira Classic 1041
10.	12		58	Black		Madeira Classic 1000
11.	5		664	Dark Blue	PMS 295	Madeira Classic 1376



Color Film

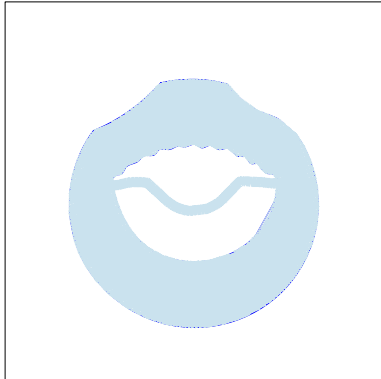
Wilcom TrueSizer



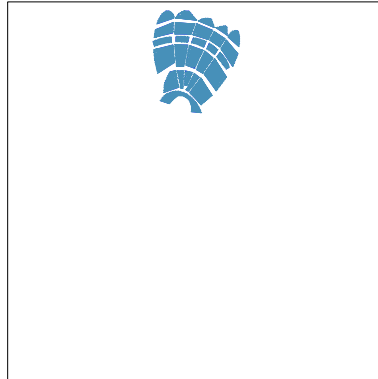
Design: **Cancer Zodiac Sign**

Title: **Cancer Zodiac Sign**

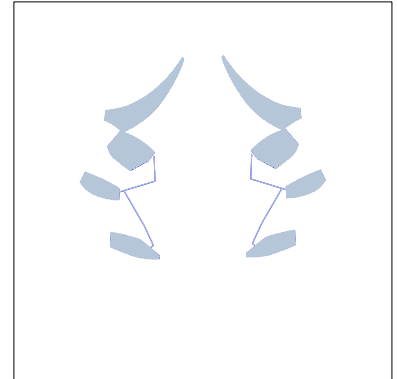
Stitches: 13,440
Height: 3.80 in
Width: 3.29 in
Colors: 7
Colorway: Colorway 1
Zoom: 0.49



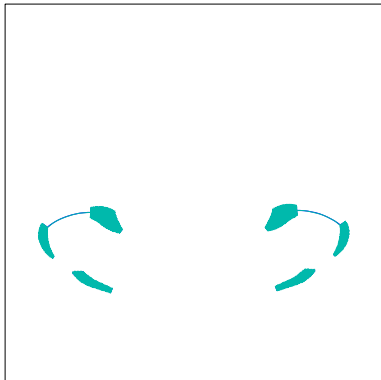
Stop #: 1
Code: Gray
Name: PMS 430
Chart: Madeira Classic 1118
Stitches: 4,811
Thread used: 101.26ft



Stop #: 2
Code: Dark Blue
Name: PMS 295
Chart: Madeira Classic 1376
Stitches: 942
Thread used: 17.02ft



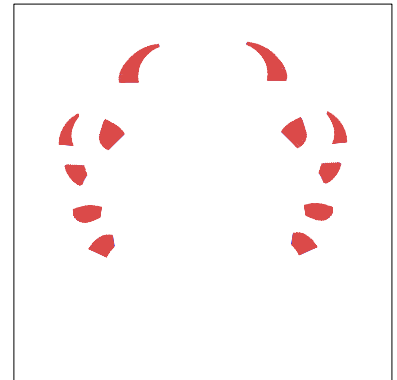
Stop #: 3
Code: Dark Gray
Name: PMS 431
Chart: Madeira Classic 1041
Stitches: 1,255
Thread used: 28.05ft



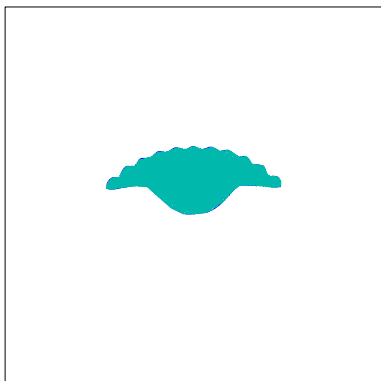
Stop #: 4
Code: Light sea green
Name: PMS 3255
Chart: Madeira Classic 1299
Stitches: 568
Thread used: 9.46ft



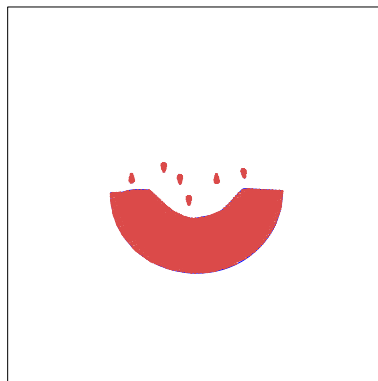
Stop #: 5
Code: Light Pink
Name: PMS 210
Chart: Madeira Classic 1321
Stitches: 1,046
Thread used: 18.63ft



Stop #: 6
Code: Red
Name: PMS 186
Chart: Madeira Classic 1147
Stitches: 980
Thread used: 18.67ft



Stop #: 7
Code: Light sea green
Name: PMS 3255
Chart: Madeira Classic 1299
Stitches: 1,089
Thread used: 21.20ft



Stop #: 8
Code: Red
Name: PMS 186
Chart: Madeira Classic 1147
Stitches: 1,526
Thread used: 30.28ft



Stop #: 9
Code: Dark Gray
Name: PMS 431
Chart: Madeira Classic 1041
Stitches: 499
Thread used: 5.44ft

Color Film

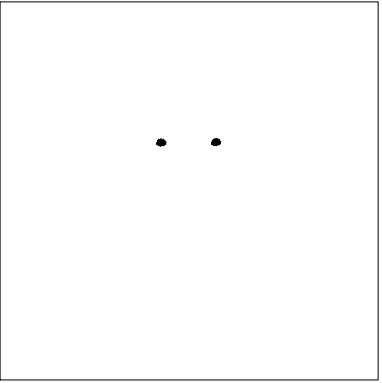
Wilcom TrueSizer



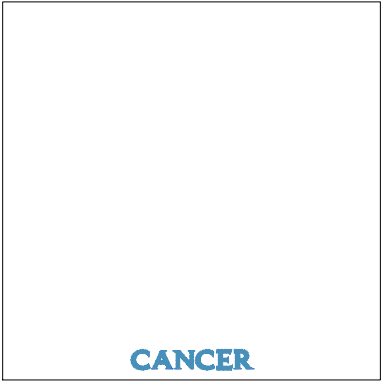
Design: **Cancer Zodiac Sign**

Title: **Cancer Zodiac Sign**

Stitches: 13,440
Height: 3.80 in
Width: 3.29 in
Colors: 7
Colorway: Colorway 1
Zoom: 0.49



Stop #: 10
Code: Black
Name:
Chart: Madeira Classic 1000
Stitches: 58
Thread used: 0.71ft



Stop #: 11
Code: Dark Blue
Name: PMS 295
Chart: Madeira Classic 1376
Stitches: 664
Thread used: 7.88ft