

*Michaels*<sup>®</sup>

**Embroidery Design  
Sewing Information**

# Production Worksheet

Wilcom TrueSizer



Design: **Toy Horse**

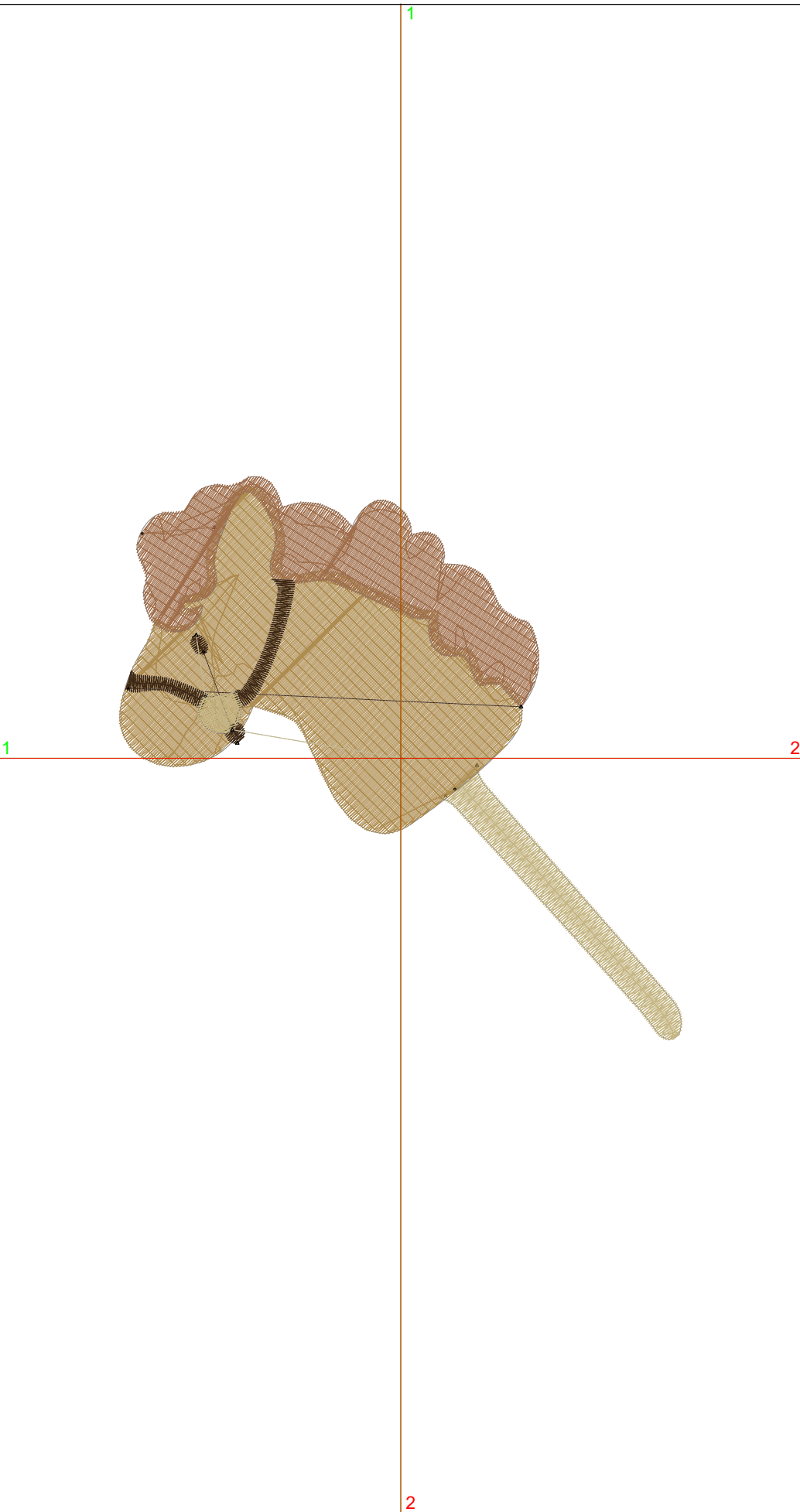
Title: **Toy Horse**

Stitches: 6,913  
 Height: 3.79 in  
 Width: 3.79 in  
 Colors: 4  
 Colorway: Colorway 1  
 Zoom: 1:1

Machine format: Tajima  
 Color changes: 4  
 Stops: 5  
 Trims: 6  
 Auto fabric: Pure Cotton  
 Required stabilizer: Topping:  
 Backing: Tear Away x 2  
 Appliqués: 0  
 Left: 48.1 mm  
 Right: 48.1 mm  
 Up: 48.2 mm  
 Down: 48.2 mm  
 EndX: 0.00 in  
 EndY: 0.00 in  
 Area: 14.38 in<sup>2</sup>  
 Max stitch: 10.4 mm  
 Min stitch: 0.4 mm  
 Max jump: 6.7 mm  
 Total thread: 146.71ft  
 Total bobbin: 59.09ft

Stop Sequence:

#	#	Color	St.	Code	Name	Chart
1.	10		445	10	Pink	Wilcom
2.	9		3,769	9	Orange	Wilcom
3.	44		2,192	44	Red Brown	Wilcom
4.	6		370	6	Brick Red	Wilcom
5.	10		135	10	Pink	Wilcom



# Color Film

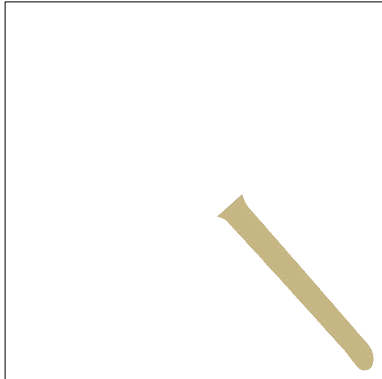
Wilcom TrueSizer



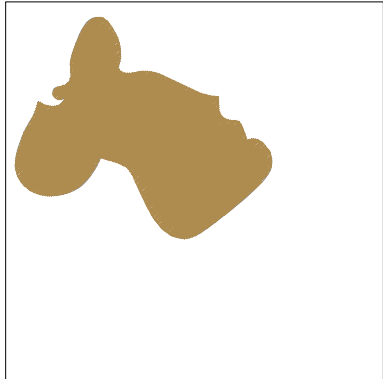
Design: **Toy Horse**

Title: **Toy Horse**

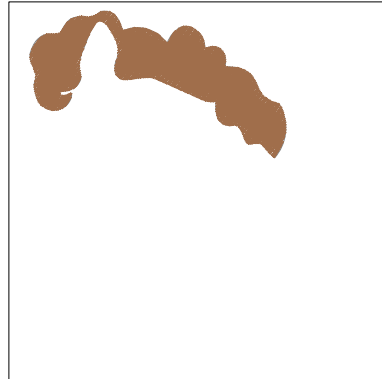
Stitches: 6,913  
Height: 3.79 in  
Width: 3.79 in  
Colors: 4  
Colorway: Colorway 1  
Zoom: 0.49



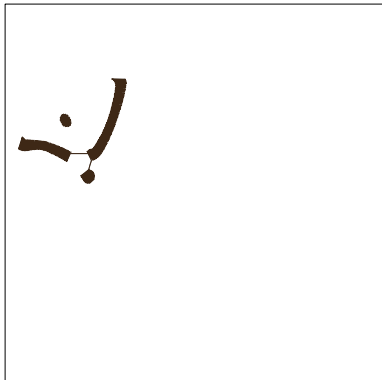
Stop #: 1  
Code: 10  
Name: Pink  
Chart: Wilcom  
Stitches: 445  
Thread used: 13.44ft



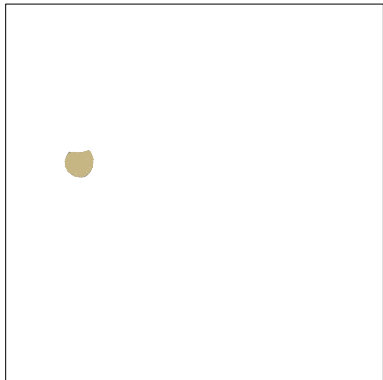
Stop #: 2  
Code: 9  
Name: Orange  
Chart: Wilcom  
Stitches: 3,769  
Thread used: 81.24ft



Stop #: 3  
Code: 44  
Name: Red Brown  
Chart: Wilcom  
Stitches: 2,192  
Thread used: 42.14ft



Stop #: 4  
Code: 6  
Name: Brick Red  
Chart: Wilcom  
Stitches: 370  
Thread used: 6.10ft



Stop #: 5  
Code: 10  
Name: Pink  
Chart: Wilcom  
Stitches: 135  
Thread used: 2.14ft