

Michaels®

Embroidery Design  
Sewing Information

# Production Worksheet

Wilcom TrueSizer



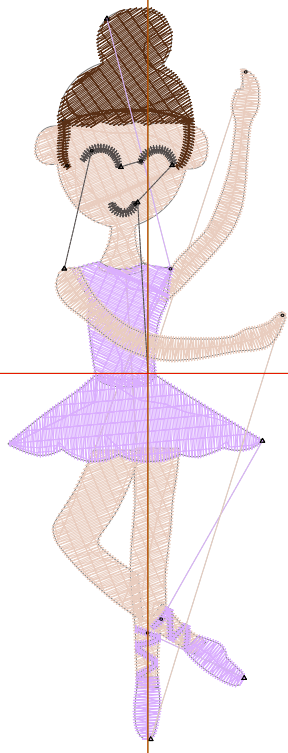
Design: **Ballerina Performer**  
 Title: **Ballerina Performer**

Stitches: 4,276  
 Height: 3.81 in  
 Width: 1.45 in  
 Colors: 4  
 Colorway: Colorway 1  
 Zoom: 1:1

Machine format: Tajima  
 Color changes: 4  
 Stops: 5  
 Trims: 9  
 Auto fabric: Pure Cotton  
 Required stabilizer: Topping:  
 Backing: Tear Away  
 x 2  
 Appliqués: 0  
 Left: 18.4 mm  
 Right: 18.4 mm  
 Up: 48.3 mm  
 Down: 48.3 mm  
 EndX: 0.00 in  
 EndY: 0.00 in  
 Area: 5.50 in<sup>2</sup>  
 Max stitch: 6.6 mm  
 Min stitch: 0.3 mm  
 Max jump: 6.7 mm  
 Total thread: 74.50ft  
 Total bobbin: 26.55ft

Stop Sequence:

#	#	Color	St.	Code	Name	Chart
1.	3		1,862	3	Wilcom	
2.	1		578	1	Wilcom	
3.	4		1,359	4	Wilcom	
4.	3		288	3	Wilcom	
5.	2		187	2	Wilcom	



# Color Film

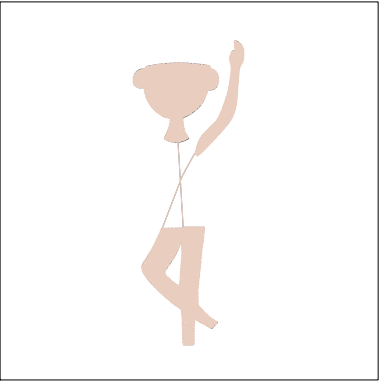
Wilcom TrueSizer



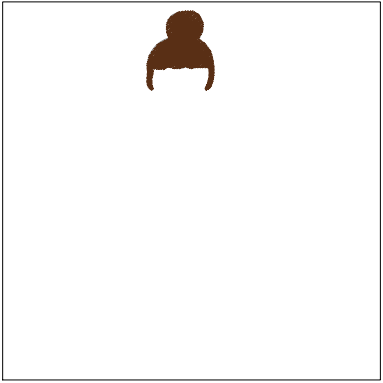
Design: **Ballerina Performer**

Title: **Ballerina Performer**

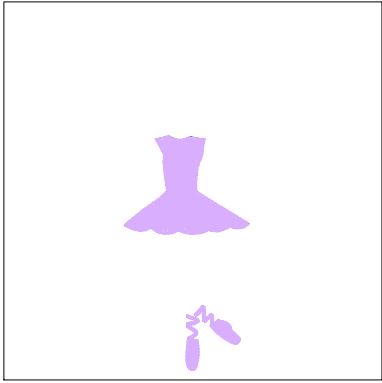
Stitches: 4,276  
Height: 3.81 in  
Width: 1.45 in  
Colors: 4  
Colorway: Colorway 1  
Zoom: 0.49



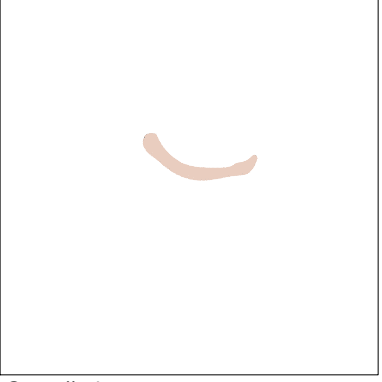
Stop #: 1  
Code: 3  
Name:  
Chart: Wilcom  
Stitches: 1,862  
Thread used: 32.37ft



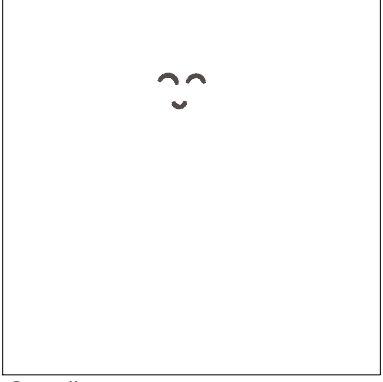
Stop #: 2  
Code: 1  
Name:  
Chart: Wilcom  
Stitches: 578  
Thread used: 9.89ft



Stop #: 3  
Code: 4  
Name:  
Chart: Wilcom  
Stitches: 1,359  
Thread used: 23.12ft



Stop #: 4  
Code: 3  
Name:  
Chart: Wilcom  
Stitches: 288  
Thread used: 5.46ft



Stop #: 5  
Code: 2  
Name:  
Chart: Wilcom  
Stitches: 187  
Thread used: 2.01ft