

*Michaels*<sup>®</sup>

**Embroidery Design  
Sewing Information**

# Production Worksheet

Wilcom TrueSizer



Design: **Dancer**

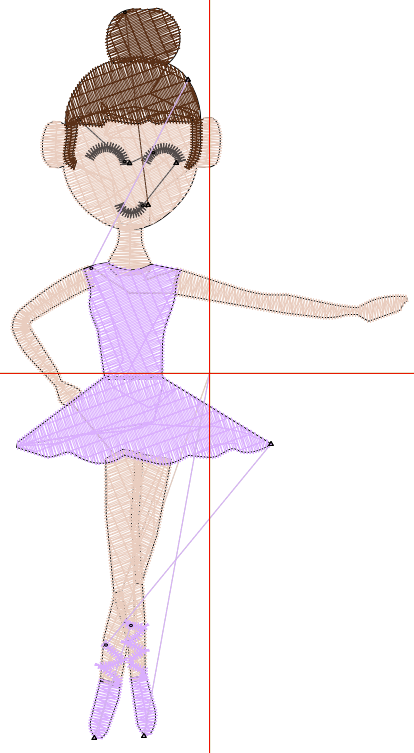
Title: **Dancer**

Stitches: 4,186  
 Height: 3.80 in  
 Width: 2.07 in  
 Colors: 4  
 Colorway: Colorway 1  
 Zoom: 1:1

Machine format: Tajima  
 Color changes: 3  
 Stops: 4  
 Trims: 8  
 Auto fabric: Pure Cotton  
 Required stabilizer: Topping:  
 Backing: Tear Away  
 x 2  
 Appliqués: 0  
 Left: 26.3 mm  
 Right: 26.3 mm  
 Up: 48.3 mm  
 Down: 48.3 mm  
 EndX: 0.00 in  
 EndY: 0.00 in  
 Area: 7.87 in<sup>2</sup>  
 Max stitch: 6.8 mm  
 Min stitch: 0.3 mm  
 Max jump: 6.8 mm  
 Total thread: 69.29ft  
 Total bobbin: 24.01ft

Stop Sequence:

#	#	Color	St.	Code	Name	Chart
1.	2		2,026	8		Wilcom
2.	4		174	19		Wilcom
3.	3		612	9		Wilcom
4.	1		1,372	2		Wilcom



# Color Film

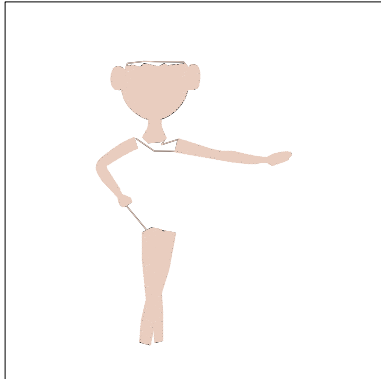
Wilcom TrueSizer



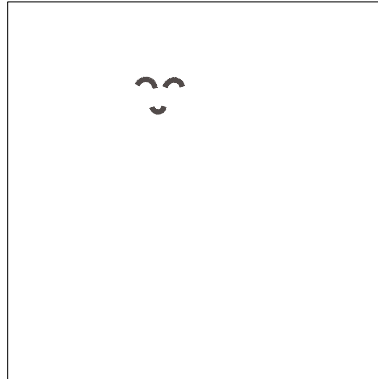
Design: **Dancer**

Title: **Dancer**

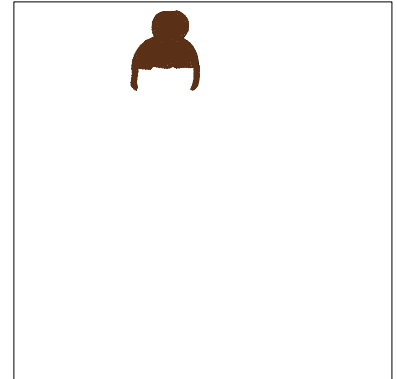
Stitches: 4,186  
Height: 3.80 in  
Width: 2.07 in  
Colors: 4  
Colorway: Colorway 1  
Zoom: 0.49



Stop #: 1  
Code: 8  
Name:  
Chart: Wilcom  
Stitches: 2,026  
Thread used: 33.16ft



Stop #: 2  
Code: 19  
Name:  
Chart: Wilcom  
Stitches: 174  
Thread used: 2.00ft



Stop #: 3  
Code: 9  
Name:  
Chart: Wilcom  
Stitches: 612  
Thread used: 10.11ft



Stop #: 4  
Code: 2  
Name:  
Chart: Wilcom  
Stitches: 1,372  
Thread used: 22.70ft