

Michaels®

Embroidery Design
Sewing Information

Production Worksheet

Wilcom TrueSizer



Stitches: 4,261
 Height: 3.79 in
 Width: 1.74 in
 Colors: 4
 Colorway: Colorway 1
 Zoom: 1:1

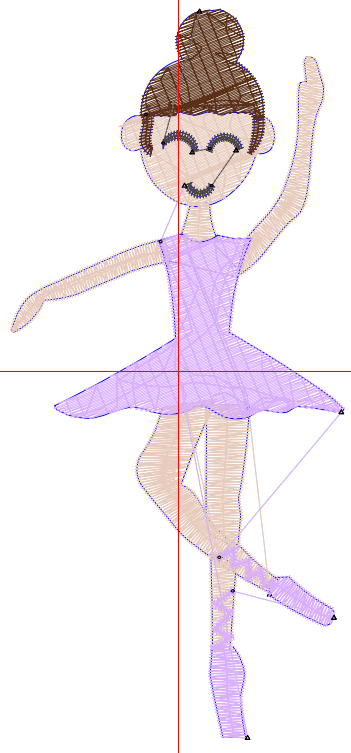
Design: **Spinning Ballerina**

Title: **Spinning Ballerina**

Machine format: Tajima
 Color changes: 3
 Stops: 4
 Trims: 9
 Auto fabric: Custom Fabric
 Required stabilizer: Topping:
 Backing: Tear Away x 2
 Appliqués: 0
 Left: 22.3 mm
 Right: 22.0 mm
 Up: 47.9 mm
 Down: 48.4 mm
 EndX: 0.00 in
 EndY: 0.00 in
 Area: 6.61 in²
 Max stitch: 7.4 mm
 Min stitch: 0.2 mm
 Max jump: 6.9 mm
 Total thread: 70.56ft
 Total bobbin: 24.46ft

Stop Sequence:

#	#	Color	St.	Code	Name	Chart
1.	17		2,207	Light Brown	PMS 155	Madeira Classic 1055
2.	14		470	Brown	PMS 4635	Madeira Classic 1258
3.	12		152	Black		Madeira Classic 1000
4.	28		1,430	Purple	PMS 2613	Madeira Classic 1033



Color Film

Wilcom TrueSizer



Design: **Spinning Ballerina**

Title: **Spinning Ballerina**

Stitches: 4,261

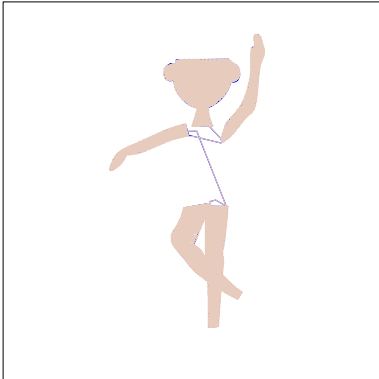
Height: 3.79 in

Width: 1.74 in

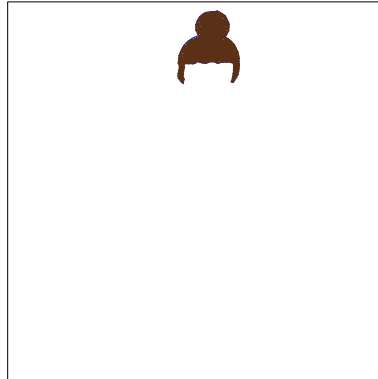
Colors: 4

Colorway: Colorway 1

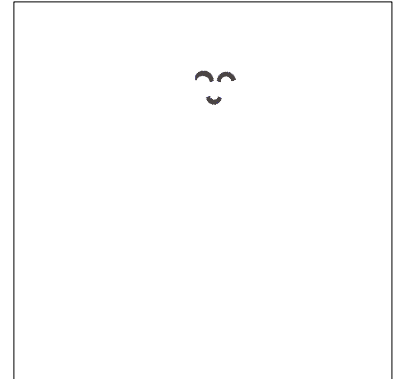
Zoom: 0.49



Stop #: 1
Code: Light Brown
Name: PMS 155
Chart: Madeira Classic 1055
Stitches: 2,207
Thread used: 35.57ft



Stop #: 2
Code: Brown
Name: PMS 4635
Chart: Madeira Classic 1258
Stitches: 470
Thread used: 8.06ft



Stop #: 3
Code: Black
Name:
Chart: Madeira Classic 1000
Stitches: 152
Thread used: 1.66ft



Stop #: 4
Code: Purple
Name: PMS 2613
Chart: Madeira Classic 1033
Stitches: 1,430
Thread used: 23.95ft