

Michaels®

Embroidery Design
Sewing Information

Stitches: 19971
 Colors: 6
 Color changes: 7
 Stops: 8

Machine: Tajima
 Trims: 26

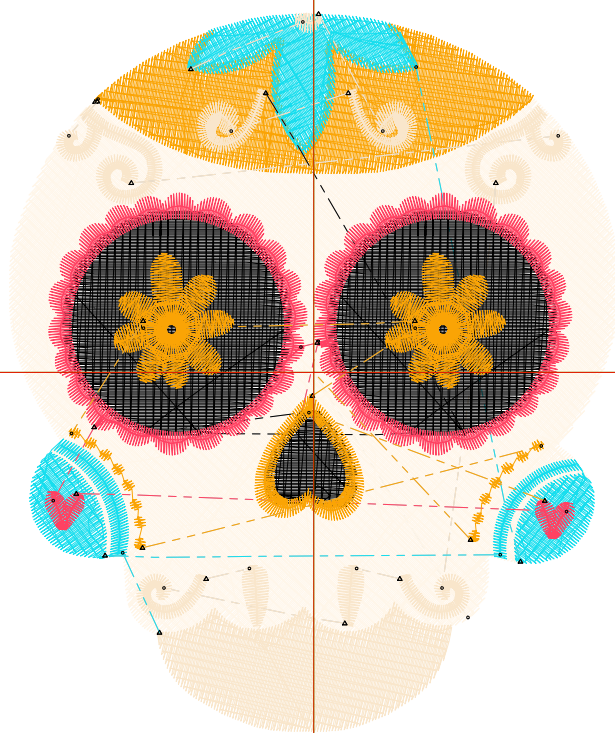
Left: 40.3 mm
 Right: 40.3 mm
 Up: 47.5 mm
 Down: 47.5 mm

EndX: 0.00 in
 EndY: 0.00 in

Max Stitch: 11.7 mm
 Min Stitch: 0.3 mm
 Max Jump: 6.8 mm

Colorway: Colorway 1

#	C	St.	Descr	Code
1.	20		7286 Powder Blue	20
Brand: Default				
2.	19		1778 Khaki 19	
Brand: Default				
3.	18		2229 Grey 18	
Brand: Default				
4.	17		1571 Turquoise	17
Brand: Default				
5.	18		374 Grey 18	
Brand: Default				
6.	14		3450 Black 14	
Brand: Default				
7.	16		1739 Sand 16	
Brand: Default				
8.	19		1542 Khaki 19	
Brand: Default				
Total Bobbin:			152.00ft	



1

2

2