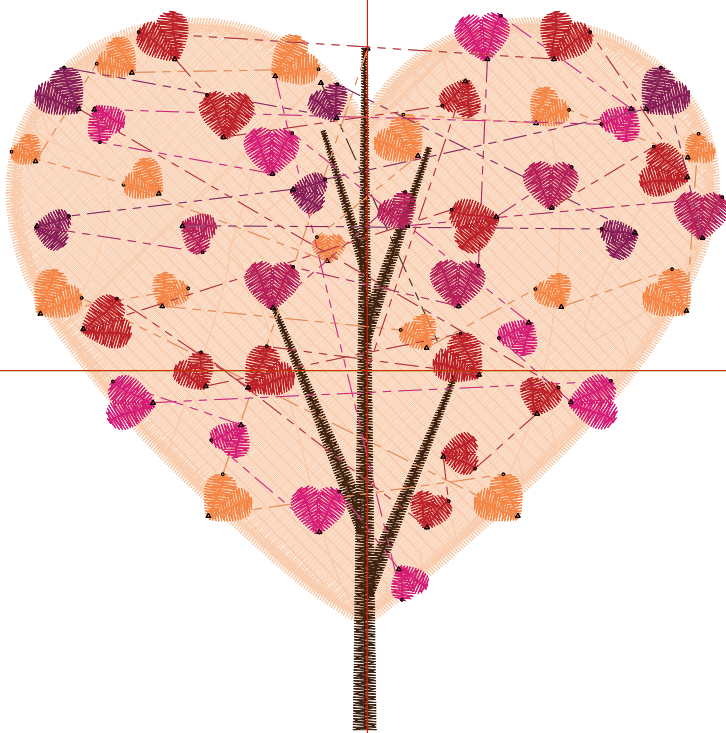


Michaels®

Embroidery Design
Sewing Information



Stitches: 17804
 Colors: 7
 Color changes: 10
 Stops: 11

Machine: Tajima
 Trims: 52

Left: 47.8 mm
 Right: 47.8 mm
 Up: 47.5 mm
 Down: 47.5 mm

EndX: 0.00 in
 EndY: 0.00 in

Max Stitch: 10.0 mm
 Min Stitch: 0.3 mm
 Max Jump: 7.0 mm

Colorway: Colorway 1

#	C	St.	Descr	Code
---	---	-----	-------	------

- | | | | | |
|-------------------|----|-------|------------|----|
| 1. | 10 | 11161 | Pink | 10 |
| Brand: DecoStudio | | | | |
| 2. | 6 | 1624 | Brick Red | 6 |
| Brand: DecoStudio | | | | |
| 3. | 9 | 1433 | Orange | 9 |
| Brand: DecoStudio | | | | |
| 4. | 7 | 1001 | Magenta | 7 |
| Brand: DecoStudio | | | | |
| 5. | 8 | 431 | Purple | 8 |
| Brand: DecoStudio | | | | |
| 6. | 11 | 290 | Dark Brown | 11 |
| Brand: DecoStudio | | | | |
| 7. | 8 | 90 | Purple | 8 |
| Brand: DecoStudio | | | | |
| 8. | 11 | 292 | Dark Brown | 11 |
| Brand: DecoStudio | | | | |
| 9. | 5 | 824 | Red | 5 |
| Brand: DecoStudio | | | | |
| 10. | 8 | 109 | Purple | 8 |
| Brand: DecoStudio | | | | |
| 11. | 5 | 547 | Red | 5 |
| Brand: DecoStudio | | | | |
| Total Bobbin: | | | 126.85ft | |