

Michaels®

Embroidery Design  
Sewing Information

# Production Worksheet

Wilcom TrueSizer



Design: **Soul Heart**

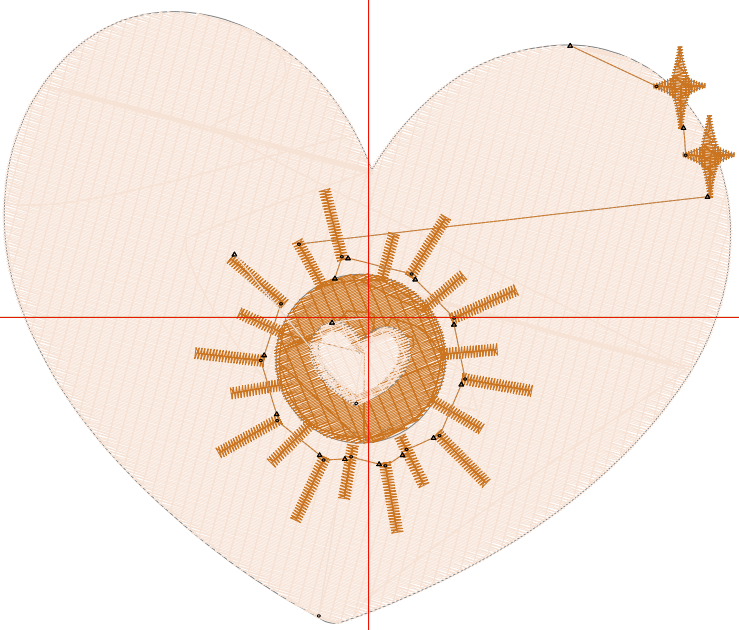
Title: **Soul Heart**

Stitches: 11,432  
 Height: 3.19 in  
 Width: 3.81 in  
 Colors: 2  
 Colorway: Colorway 1  
 Zoom: 1:1

Machine format: Tajima  
 Color changes: 2  
 Stops: 3  
 Trims: 17  
 Auto fabric: Pure Cotton  
 Required stabilizer: Topping:  
 Backing: Tear Away  
 x 2  
 Appliqués: 0  
 Left: 48.4 mm  
 Right: 48.4 mm  
 Up: 40.5 mm  
 Down: 40.5 mm  
 EndX: 0.00 in  
 EndY: 0.00 in  
 Area: 12.14 in<sup>2</sup>  
 Max stitch: 11.4 mm  
 Min stitch: 0.3 mm  
 Max jump: 6.8 mm  
 Total thread: 239.31ft  
 Total bobbin: 96.78ft

Stop Sequence:

#	#	Color	St.	Code	Name	Chart
1.	6		8,836	6		Wilcom
2.	1		2,314	1		Wilcom
3.	6		280	6		Wilcom



**Color Film**

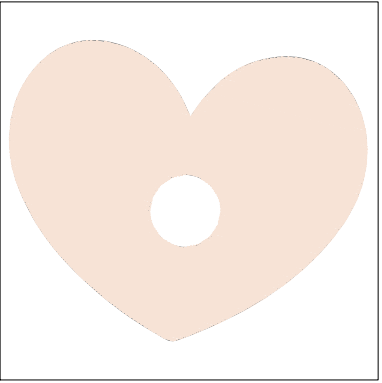
Wilcom TrueSizer



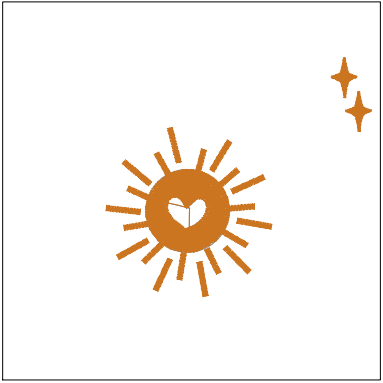
Design: **Soul Heart**

Title: **Soul Heart**

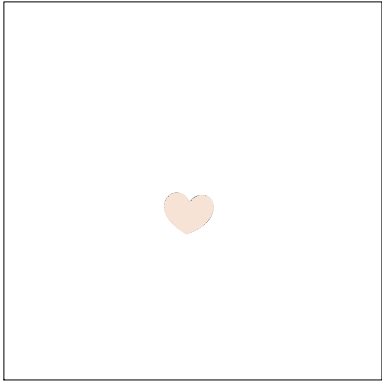
Stitches: 11,432  
Height: 3.19 in  
Width: 3.81 in  
Colors: 2  
Colorway: Colorway 1  
Zoom: 0.49



Stop #: 1  
Code: 6  
Name:  
Chart: Wilcom  
Stitches: 8,836  
Thread used: 199.21ft



Stop #: 2  
Code: 1  
Name:  
Chart: Wilcom  
Stitches: 2,314  
Thread used: 34.24ft



Stop #: 3  
Code: 6  
Name:  
Chart: Wilcom  
Stitches: 280  
Thread used: 4.87ft