

Michaels®

Embroidery Design  
Sewing Information

# Production Worksheet

Wilcom TrueSizer



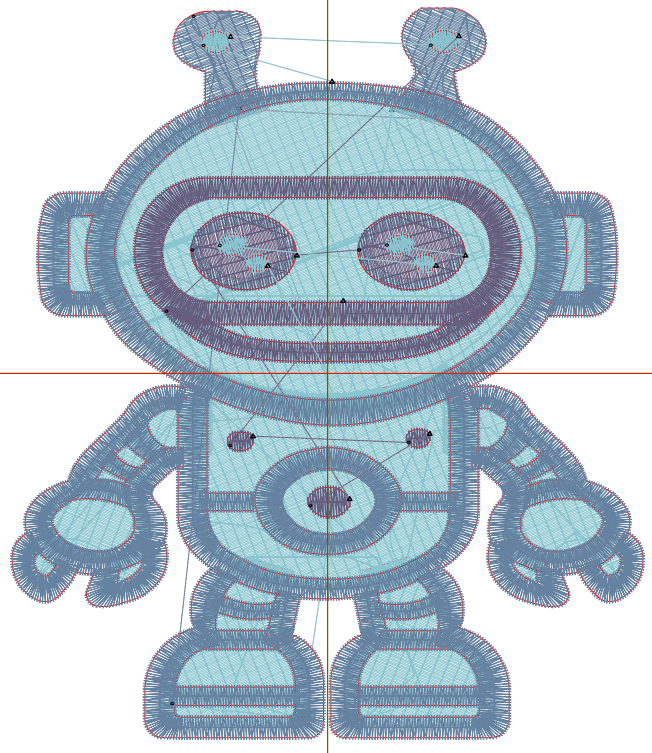
Design: **Cute Robot**  
 Title: **Cute Robot**

Stitches: 18,441  
 Height: 3.81 in  
 Width: 3.30 in  
 Colors: 3  
 Colorway: Colorway 1  
 Zoom: 1:1

Machine format: Tajima  
 Color changes: 5  
 Stops: 6  
 Trims: 13  
 Auto fabric: Pure Cotton  
 Required stabilizer: Topping:  
 Backing: Tear Away x  
 2  
 Appliqués: 0  
 Left: 42.0 mm  
 Right: 42.0 mm  
 Up: 48.4 mm  
 Down: 48.4 mm  
 EndX: 0.00 in  
 EndY: 0.00 in  
 Area: 12.59 in<sup>2</sup>  
 Max stitch: 10.4 mm  
 Min stitch: 0.3 mm  
 Max jump: 6.8 mm  
 Total thread: 371.58ft  
 Total bobbin: 147.32ft

Stop Sequence:

#	#	Color	St.	Code	Name	Chart
1.	2	■	667	2	Cyan	Wilcom
2.	22	■	8,597	22	Ice Blue	Wilcom
3.	2	■	6,959	2	Cyan	Wilcom
4.	22	■	90	22	Ice Blue	Wilcom
5.	8	■	1,977	8	Purple	Wilcom
6.	22	■	149	22	Ice Blue	Wilcom



# Color Film

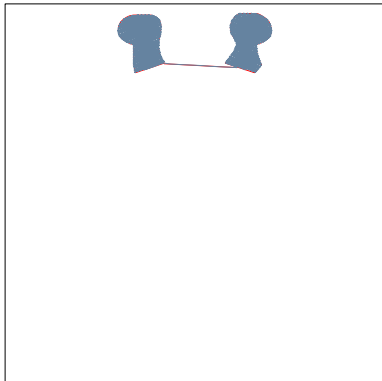
Wilcom TrueSizer



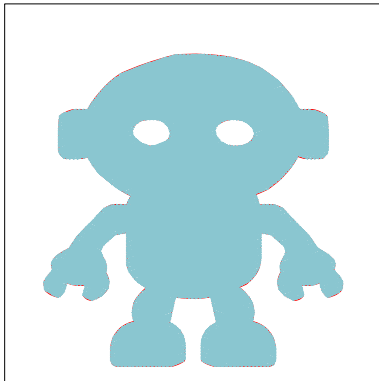
Design: **Cute Robot**

Title: **Cute Robot**

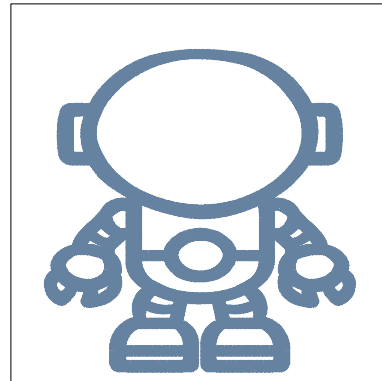
Stitches: 18,441  
Height: 3.81 in  
Width: 3.30 in  
Colors: 3  
Colorway: Colorway 1  
Zoom: 0.49



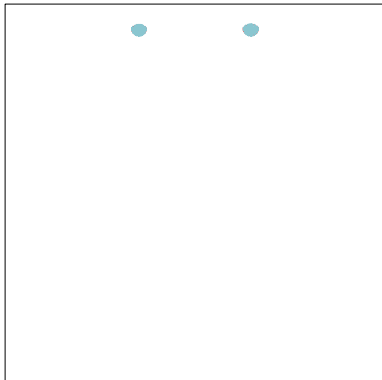
Stop #: 1  
Code: 2  
Name: Cyan  
Chart: Wilcom  
Stitches: 667  
Thread used: 11.90ft



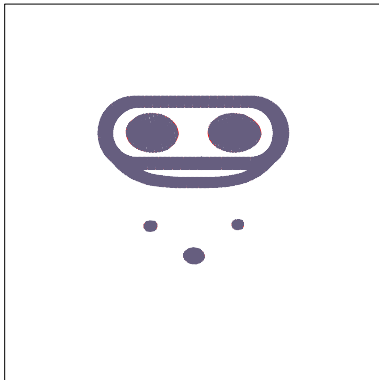
Stop #: 2  
Code: 22  
Name: Ice Blue  
Chart: Wilcom  
Stitches: 8,597  
Thread used: 175.25ft



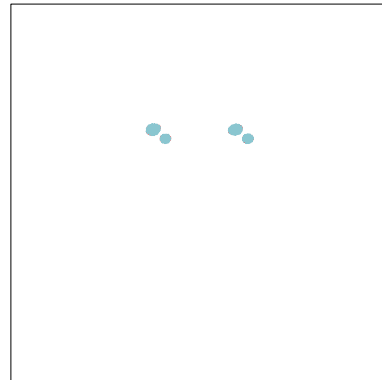
Stop #: 3  
Code: 2  
Name: Cyan  
Chart: Wilcom  
Stitches: 6,959  
Thread used: 141.15ft



Stop #: 4  
Code: 22  
Name: Ice Blue  
Chart: Wilcom  
Stitches: 90  
Thread used: 1.37ft



Stop #: 5  
Code: 8  
Name: Purple  
Chart: Wilcom  
Stitches: 1,977  
Thread used: 37.77ft



Stop #: 6  
Code: 22  
Name: Ice Blue  
Chart: Wilcom  
Stitches: 149  
Thread used: 2.16ft