

Michaels®

Embroidery Design
Sewing Information

Production Worksheet

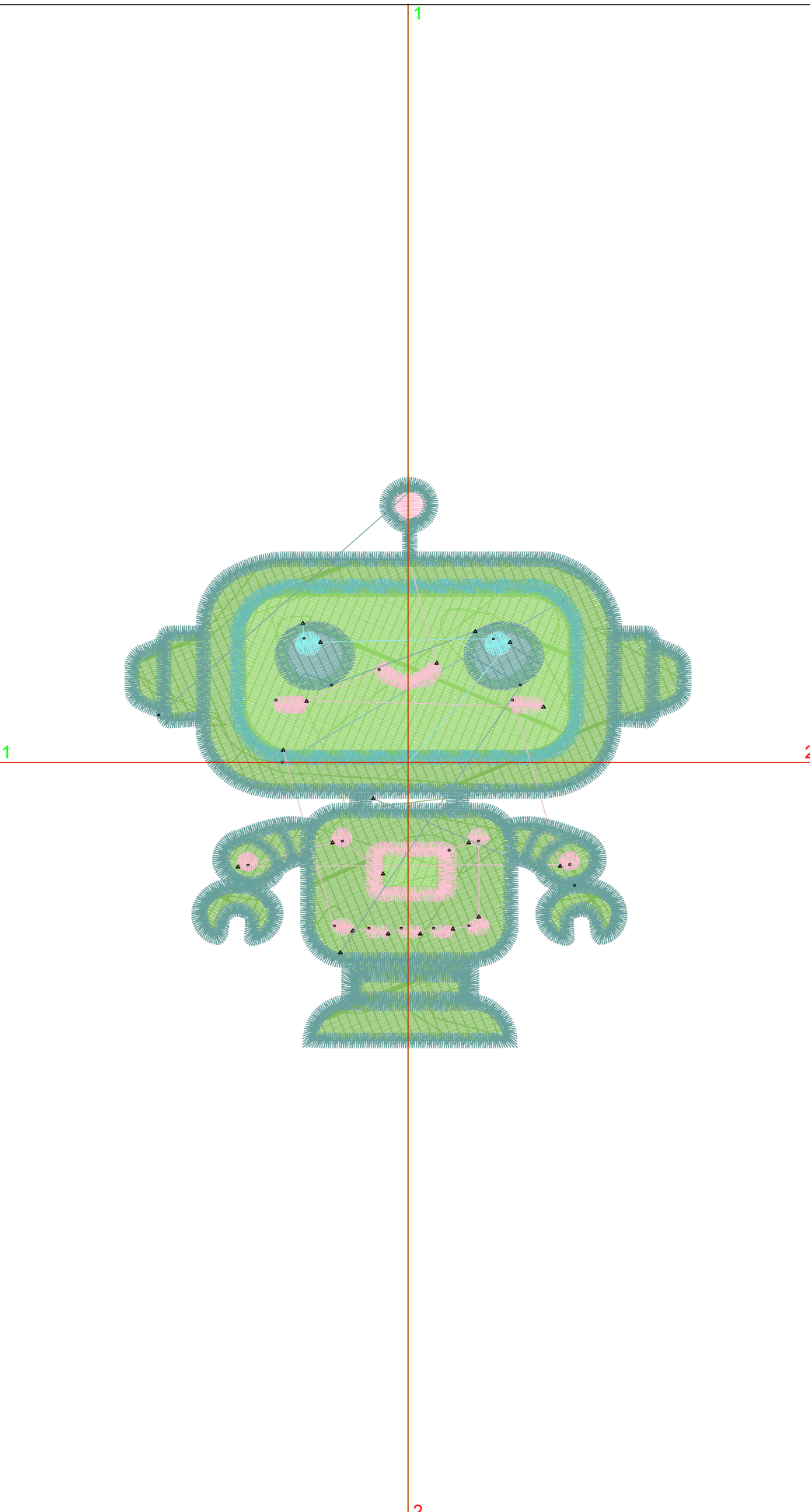
Wilcom TrueSizer



Design: **Little Green Robot**
 Title: **Little Green Robot**

Stitches: 19,612
 Height: 3.82 in
 Width: 3.79 in
 Colors: 6
 Colorway: Colorway 1
 Zoom: 1:1

Machine format: Tajima
 Color changes: 5
 Stops: 6
 Trims: 25
 Auto fabric: Pure Cotton
 Required stabilizer: Topping:
 Backing: Tear Away x 2
 Appliqués: 0
 Left: 48.2 mm
 Right: 48.2 mm
 Up: 48.5 mm
 Down: 48.5 mm
 EndX: 0.00 in
 EndY: 0.00 in
 Area: 14.49 in²
 Max stitch: 6.9 mm
 Min stitch: 0.3 mm
 Max jump: 6.9 mm
 Total thread: 355.72ft
 Total bobbin: 133.37ft



Stop Sequence:

#	#	Color	St.	Code	Name	Chart
1.	3	Green	7,343	3	Green	Wilcom
2.	5	Chartreuse	3,412	33	Chartreuse	Wilcom
3.	2	Cyan	1,155	2	Cyan	Wilcom
4.	4	Pink	1,090	10	Pink	Wilcom
5.	1	Dark Green	6,506	1		Wilcom
6.	6	Light Blue	104	6		Wilcom

Color Film

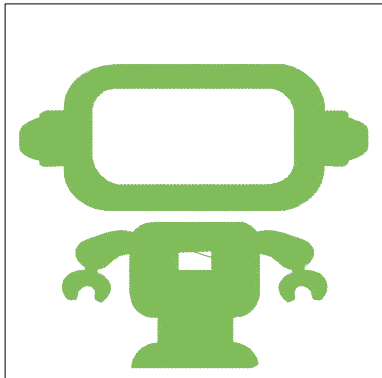
Wilcom TrueSizer



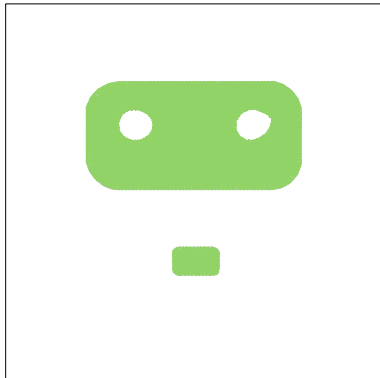
Design: **Little Green Robot**

Title: **Little Green Robot**

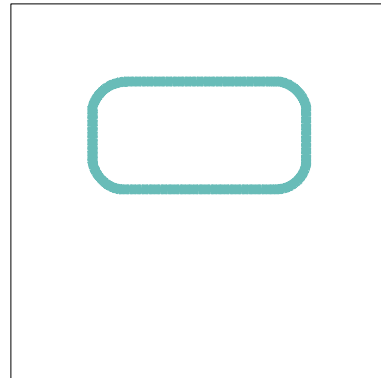
Stitches: 19,612
Height: 3.82 in
Width: 3.79 in
Colors: 6
Colorway: Colorway 1
Zoom: 0.49



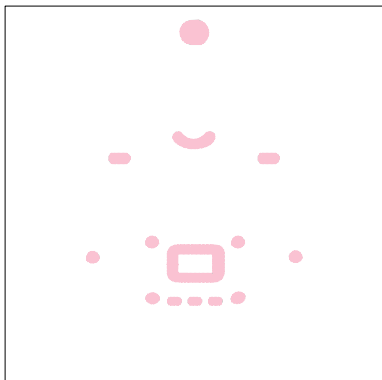
Stop #: 1
Code: 3
Name: Green
Chart: Wilcom
Stitches: 7,343
Thread used: 136.95ft



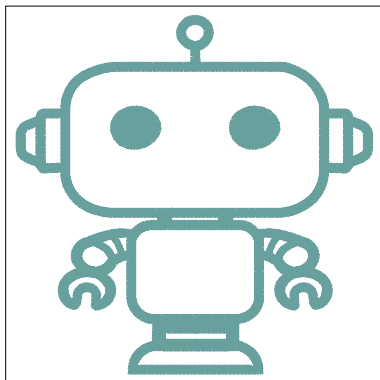
Stop #: 2
Code: 33
Name: Chartreuse
Chart: Wilcom
Stitches: 3,412
Thread used: 67.02ft



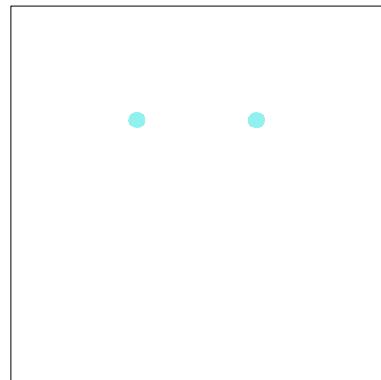
Stop #: 3
Code: 2
Name: Cyan
Chart: Wilcom
Stitches: 1,155
Thread used: 19.69ft



Stop #: 4
Code: 10
Name: Pink
Chart: Wilcom
Stitches: 1,090
Thread used: 17.20ft



Stop #: 5
Code: 1
Name:
Chart: Wilcom
Stitches: 6,506
Thread used: 111.20ft



Stop #: 6
Code: 6
Name:
Chart: Wilcom
Stitches: 104
Thread used: 1.69ft