

Michaels®

Embroidery Design
Sewing Information

Production Worksheet

Wilcom TrueSizer



Design: **Backbend**

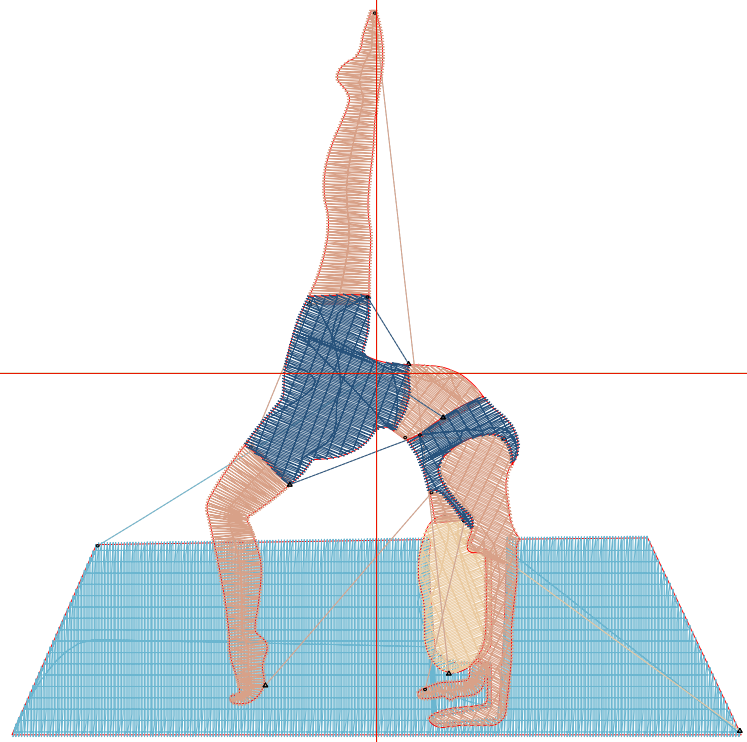
Title: **Backbend**

Stitches: 7,606
 Height: 3.78 in
 Width: 3.79 in
 Colors: 4
 Colorway: Colorway 1
 Zoom: 1:1

Machine format: Tajima
 Color changes: 3
 Stops: 4
 Trims: 9
 Auto fabric: Pure Cotton
 Required stabilizer: Topping:
 Backing: Tear Away
 x 2
 Appliqués: 0
 Left: 48.1 mm
 Right: 48.1 mm
 Up: 48.0 mm
 Down: 48.0 mm
 EndX: 0.00 in
 EndY: 0.00 in
 Area: 14.31 in²
 Max stitch: 8.9 mm
 Min stitch: 0.4 mm
 Max jump: 6.7 mm
 Total thread: 145.42ft
 Total bobbin: 55.82ft

Stop Sequence:

#	#	Color	St.	Code	Name	Chart
1.	5	■	3,814	5	Wilcom	
2.	3	■	424	3	Wilcom	
3.	2	■	2,333	2	Wilcom	
4.	4	■	1,033	4	Wilcom	



Color Film

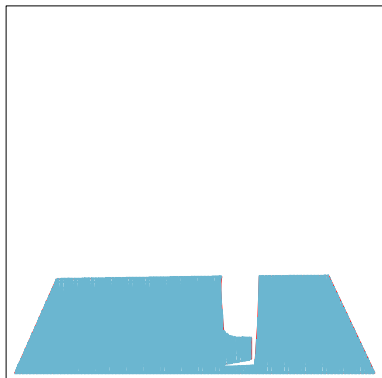
Wilcom TrueSizer



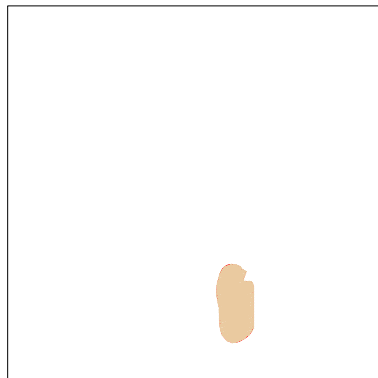
Design: **Backbend**

Title: **Backbend**

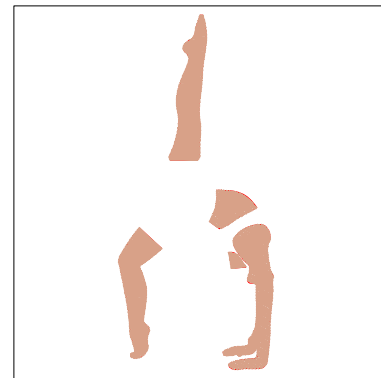
Stitches: 7,606
Height: 3.78 in
Width: 3.79 in
Colors: 4
Colorway: Colorway 1
Zoom: 0.49



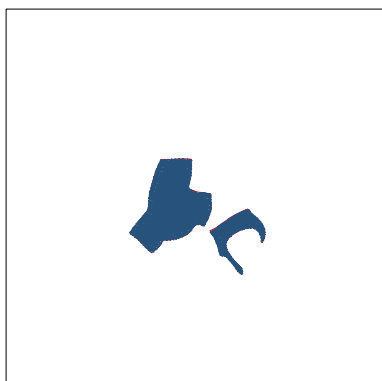
Stop #: 1
Code: 5
Name:
Chart: Wilcom
Stitches: 3,814
Thread used: 80.17ft



Stop #: 2
Code: 3
Name:
Chart: Wilcom
Stitches: 424
Thread used: 7.58ft



Stop #: 3
Code: 2
Name:
Chart: Wilcom
Stitches: 2,333
Thread used: 38.21ft



Stop #: 4
Code: 4
Name:
Chart: Wilcom
Stitches: 1,033
Thread used: 18.14ft