

Michaels®

Embroidery Design
Sewing Information

Production Worksheet

Wilcom TrueSizer



Design: **Boat Pose**

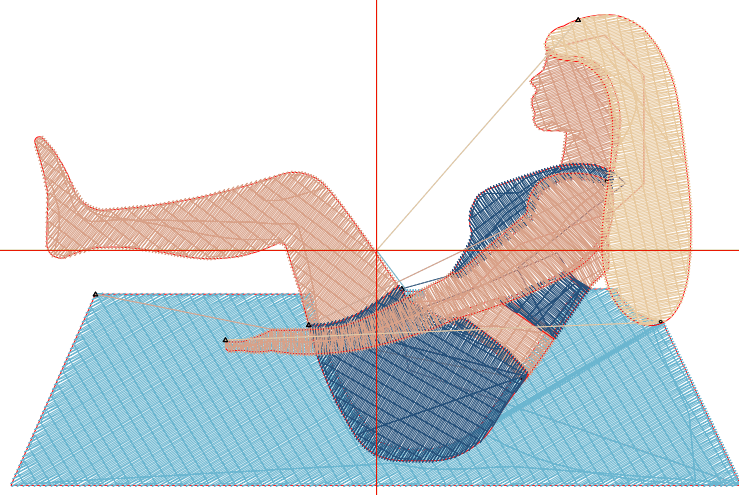
Title: **Boat Pose**

Stitches: 8,552
 Height: 2.45 in
 Width: 3.81 in
 Colors: 4
 Colorway: Colorway 1
 Zoom: 1:1

Machine format: Tajima
 Color changes: 4
 Stops: 5
 Trims: 5
 Auto fabric: Pure Cotton
 Required stabilizer: Topping:
 Backing: Tear Away
 x 2
 Appliqués: 0
 Left: 48.4 mm
 Right: 48.4 mm
 Up: 31.2 mm
 Down: 31.2 mm
 EndX: 0.00 in
 EndY: 0.00 in
 Area: 9.35 in²
 Max stitch: 6.6 mm
 Min stitch: 0.3 mm
 Max jump: 6.6 mm
 Total thread: 165.90ft
 Total bobbin: 64.09ft

Stop Sequence:

#	#	Color	St.	Code	Name	Chart
1.	4		3,231	4	Wilcom	
2.	2		1,903	2	Wilcom	
3.	3		1,427	3	Wilcom	
4.	2		1,042	2	Wilcom	
5.	1		947	1	Wilcom	



Color Film

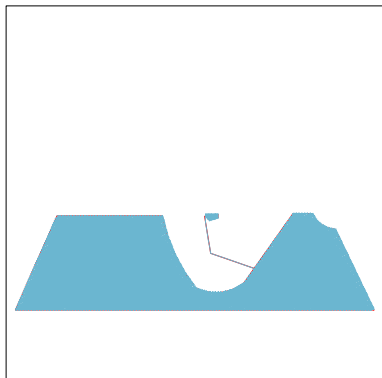
Wilcom TrueSizer



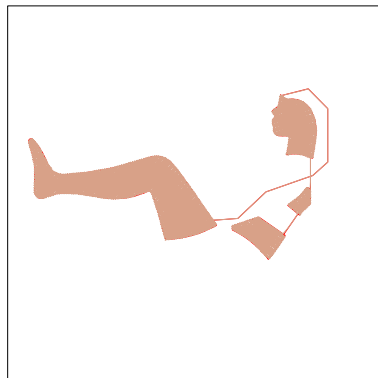
Design: **Boat Pose**

Title: **Boat Pose**

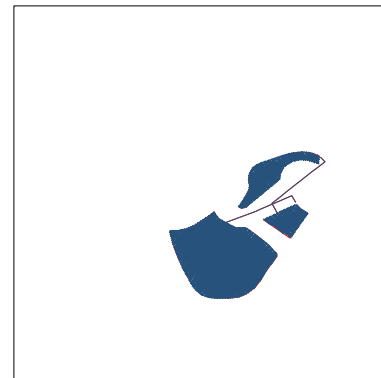
Stitches: 8,552
Height: 2.45 in
Width: 3.81 in
Colors: 4
Colorway: Colorway 1
Zoom: 0.49



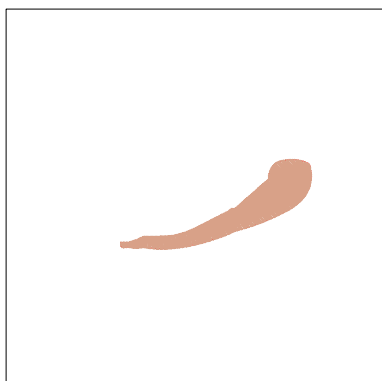
Stop #: 1
Code: 4
Name:
Chart: Wilcom
Stitches: 3,231
Thread used: 68.09ft



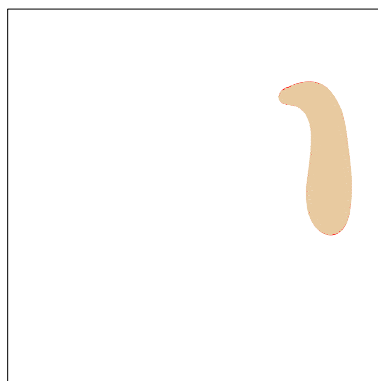
Stop #: 2
Code: 2
Name:
Chart: Wilcom
Stitches: 1,903
Thread used: 34.04ft



Stop #: 3
Code: 3
Name:
Chart: Wilcom
Stitches: 1,427
Thread used: 26.10ft



Stop #: 4
Code: 2
Name:
Chart: Wilcom
Stitches: 1,042
Thread used: 17.91ft



Stop #: 5
Code: 1
Name:
Chart: Wilcom
Stitches: 947
Thread used: 18.10ft