

Michaels®

Embroidery Design
Sewing Information

Production Worksheet

Wilcom TrueSizer

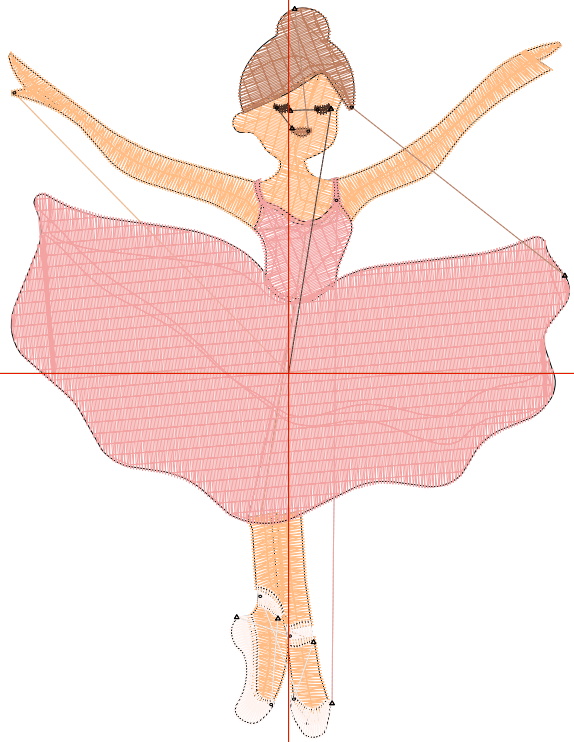


Design: **Floating Silk**

Title: **Floating Silk**

Stitches: 7,266
 Height: 3.81 in
 Width: 2.92 in
 Colors: 5
 Colorway: Madeira Classic 40
 Zoom: 1:1

Machine format: Tajima
 Color changes: 4
 Stops: 5
 Trims: 10
 Auto fabric: Pure Cotton
 Required stabilizer: Topping:
 Backing: Tear Away x 2
 Appliqués: 0
 Left: 37.1 mm
 Right: 37.1 mm
 Up: 48.4 mm
 Down: 48.4 mm
 EndX: 0.00 in
 EndY: 0.00 in
 Area: 11.12 in²
 Max stitch: 6.7 mm
 Min stitch: 0.3 mm
 Max jump: 6.7 mm
 Total thread: 138.04ft
 Total bobbin: 52.58ft



Stop Sequence:

#	#	Color	St.	Code	Name	Chart
1.	3	Orange	2,387	1172	1172	Madeira Classic 40
2.	4	White	295	1001	1001	Madeira Classic 40
3.	1	Pink	4,144	1309	1309	Madeira Classic 40
4.	2	Brown	375	1134	1134	Madeira Classic 40
5.	5	Black	63	1000	1000	Madeira Classic 40

Color Film

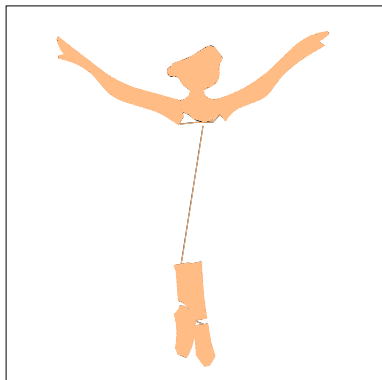
Wilcom TrueSizer



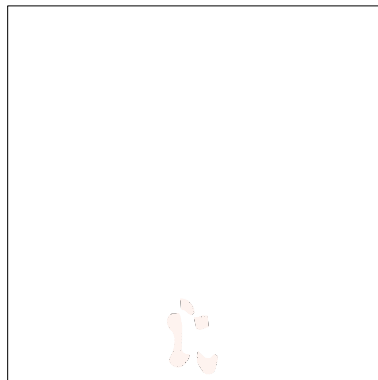
Design: **Floating Silk**

Title: **Floating Silk**

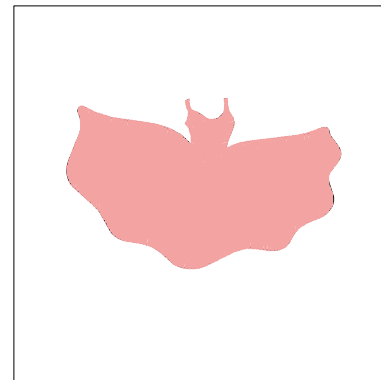
Stitches: 7,266
Height: 3.81 in
Width: 2.92 in
Colors: 5
Colorway: Madeira Classic 40
Zoom: 0.49



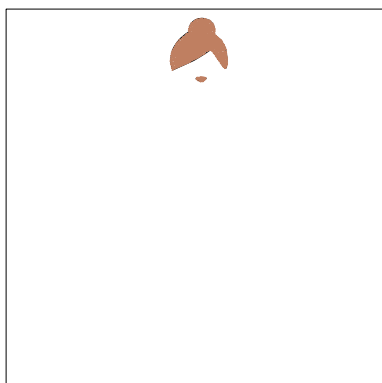
Stop #: 1
Code: 1172
Name:
Chart: Madeira Classic 40
Stitches: 2,387
Thread used: 37.53ft



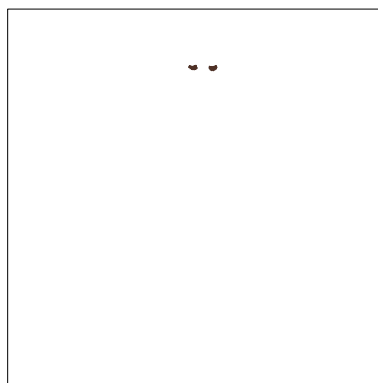
Stop #: 2
Code: 1001
Name:
Chart: Madeira Classic 40
Stitches: 295
Thread used: 4.75ft



Stop #: 3
Code: 1309
Name:
Chart: Madeira Classic 40
Stitches: 4,144
Thread used: 87.33ft



Stop #: 4
Code: 1134
Name:
Chart: Madeira Classic 40
Stitches: 375
Thread used: 6.16ft



Stop #: 5
Code: 1000
Name:
Chart: Madeira Classic 40
Stitches: 63
Thread used: 0.62ft