

Michaels®

Embroidery Design  
Sewing Information

# Production Worksheet

Wilcom TrueSizer



Design: **Legs Up Pose**

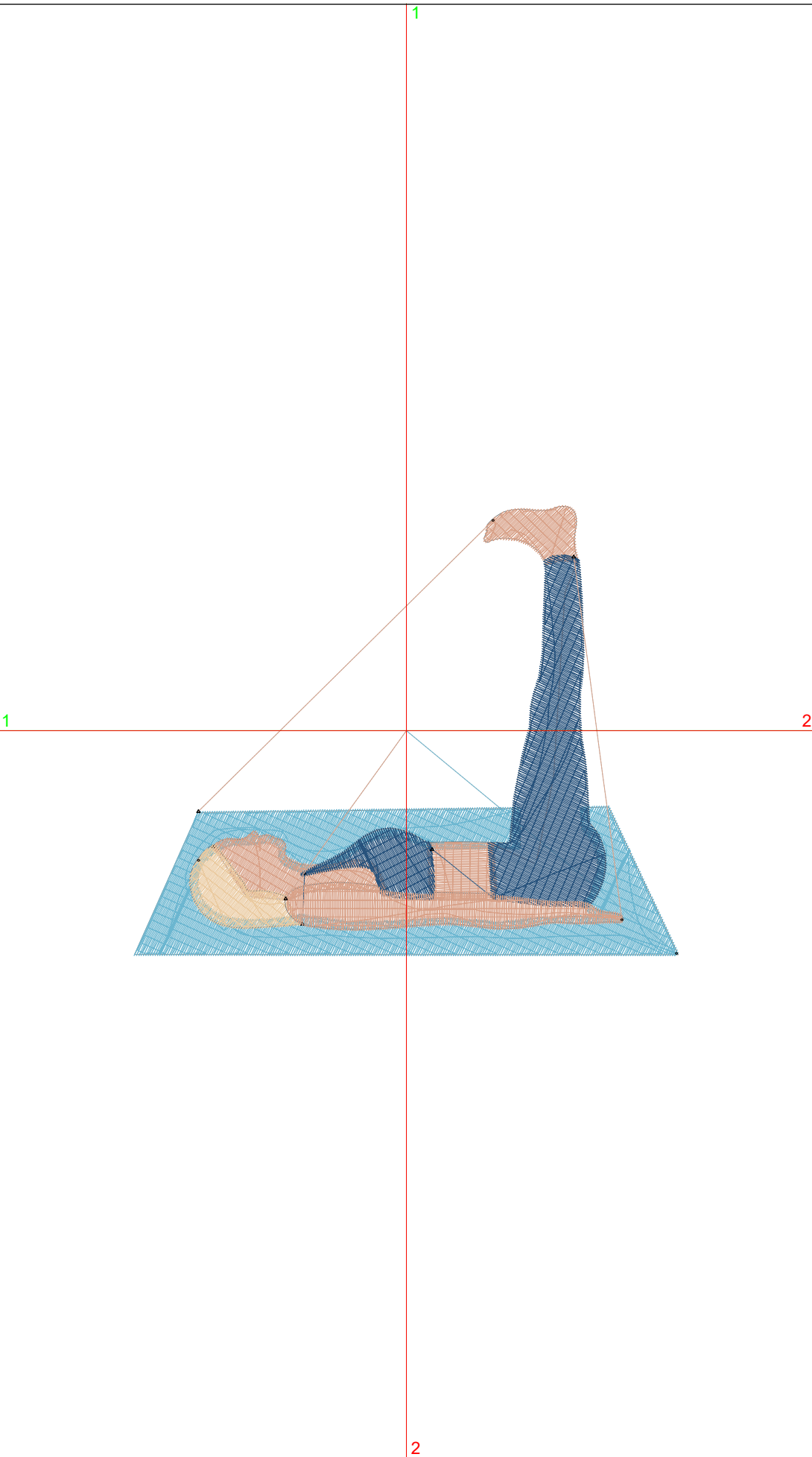
Title: **Legs Up Pose**

Stitches: 7,620  
 Height: 3.15 in  
 Width: 3.81 in  
 Colors: 4  
 Colorway: Colorway 1  
 Zoom: 1:1

Machine format: Tajima  
 Color changes: 4  
 Stops: 5  
 Trims: 6  
 Auto fabric: Pure Cotton  
 Required stabilizer: Topping:  
 Backing: Tear Away  
 x 2  
 Appliqués: 0  
 Left: 48.3 mm  
 Right: 48.3 mm  
 Up: 40.0 mm  
 Down: 40.0 mm  
 EndX: 0.00 in  
 EndY: 0.00 in  
 Area: 11.97 in<sup>2</sup>  
 Max stitch: 8.9 mm  
 Min stitch: 0.2 mm  
 Max jump: 6.9 mm  
 Total thread: 140.15ft  
 Total bobbin: 52.45ft

Stop Sequence:

#	#	Color	St.	Code	Name	Chart
1.	2		3,164	2	Wilcom	
2.	10		1,161	10	Wilcom	
3.	9		405	9	Wilcom	
4.	1		1,940	1	Wilcom	
5.	10		948	10	Wilcom	



# Color Film

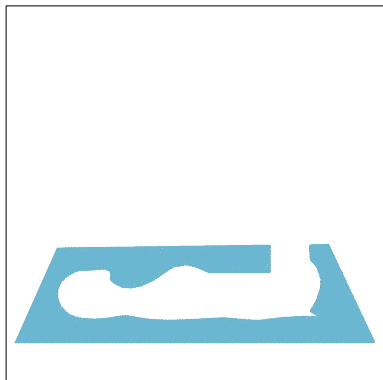
Wilcom TrueSizer



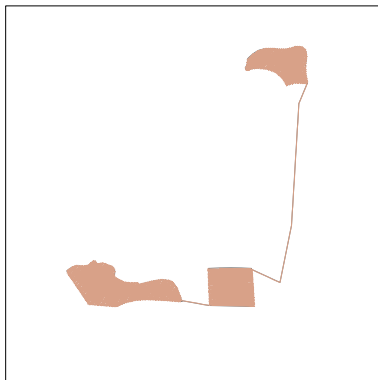
Design: **Legs Up Pose**

Title: **Legs Up Pose**

Stitches: 7,620  
Height: 3.15 in  
Width: 3.81 in  
Colors: 4  
Colorway: Colorway 1  
Zoom: 0.49



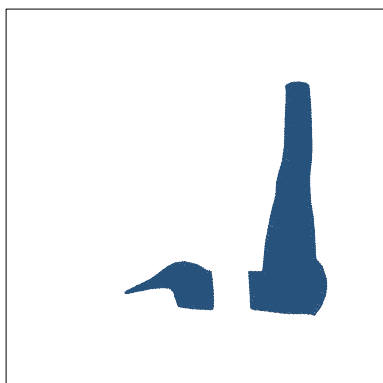
Stop #: 1  
Code: 2  
Name:  
Chart: Wilcom  
Stitches: 3,164  
Thread used: 58.17ft



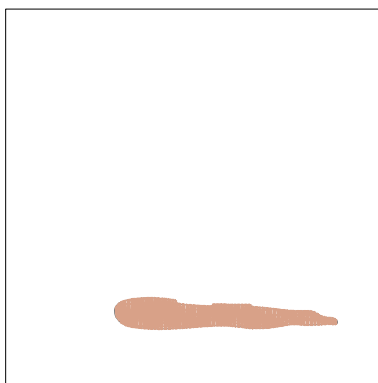
Stop #: 2  
Code: 10  
Name:  
Chart: Wilcom  
Stitches: 1,161  
Thread used: 20.41ft



Stop #: 3  
Code: 9  
Name:  
Chart: Wilcom  
Stitches: 405  
Thread used: 7.18ft



Stop #: 4  
Code: 1  
Name:  
Chart: Wilcom  
Stitches: 1,940  
Thread used: 36.80ft



Stop #: 5  
Code: 10  
Name:  
Chart: Wilcom  
Stitches: 948  
Thread used: 15.95ft