

Michaels®

Embroidery Design
Sewing Information

Production Worksheet

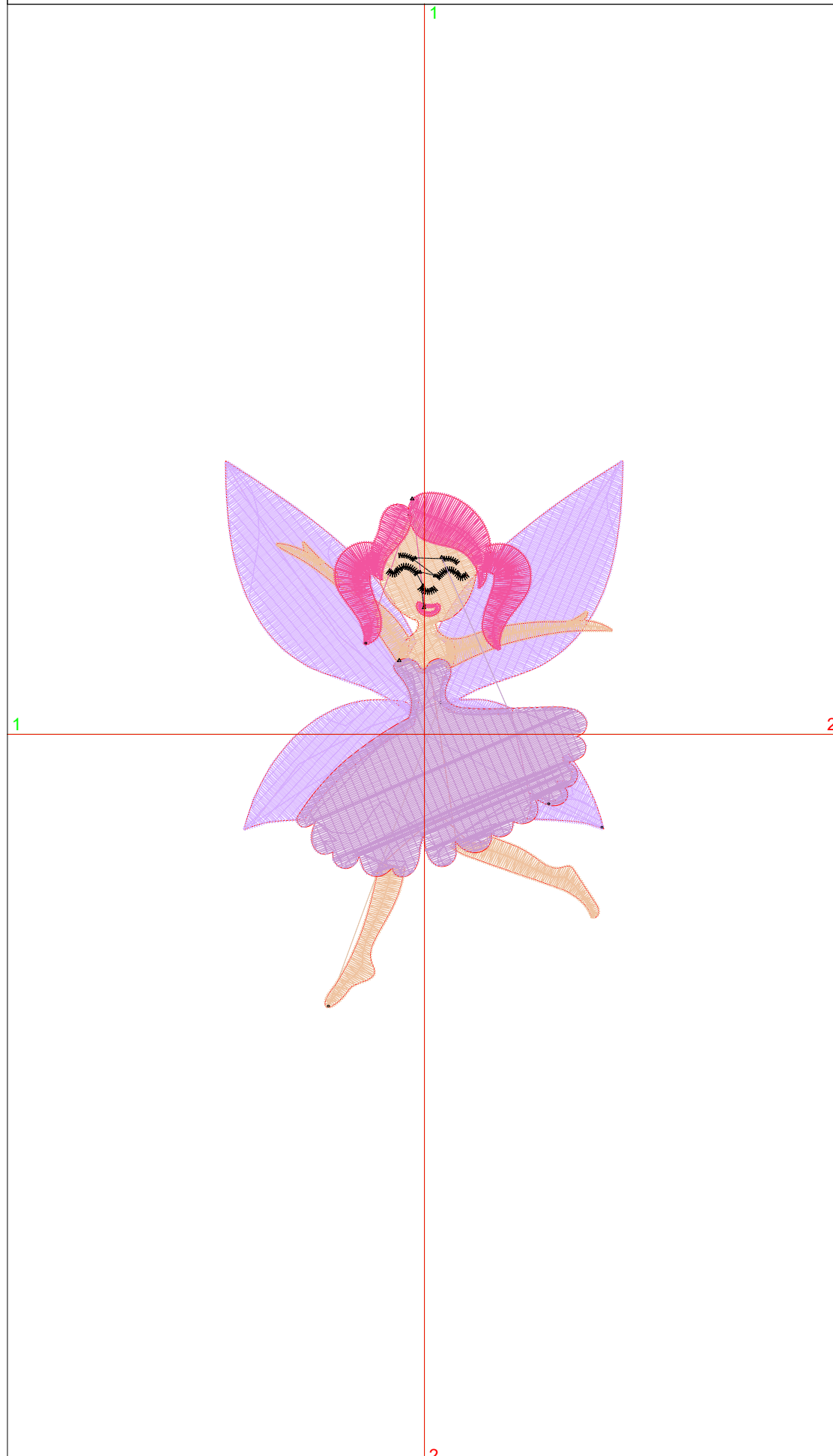
Wilcom TrueSizer



Design: **Pink Hair Fairy**

Title: **Pink Hair Fairy**

Stitches: 10,806
Height: 3.81 in
Width: 2.78 in
Colors: 5
Colorway: Colorway 1
Zoom: 1:1



Machine format: Tajima
Color changes: 4
Stops: 5
Trims: 10
Auto fabric: Pure Cotton
Required stabilizer: Topping:
Backing: Tear Away
x 2
Appliqués: 0
Left: 35.2 mm
Right: 35.3 mm
Up: 48.3 mm
Down: 48.3 mm
EndX: 0.00 in
EndY: 0.00 in
Area: 10.56 in²
Max stitch: 6.7 mm
Min stitch: 0.3 mm
Max jump: 6.7 mm
Total thread: 196.28ft
Total bobbin: 73.32ft

Stop Sequence:

#	#	Color	St.	Code	Name	Chart
1.	3		4,176	8		Wilcom
2.	4		2,322	10		Wilcom
3.	2		1,534	7		Wilcom
4.	5		249	13	Black	Wilcom
5.	1		2,523	3		Wilcom

Color Film

Wilcom TrueSizer



Design: **Pink Hair Fairy**

Title: **Pink Hair Fairy**

Stitches: 10,806

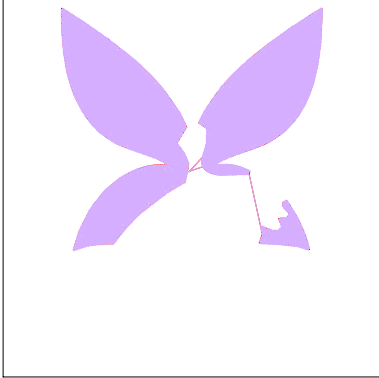
Height: 3.81 in

Width: 2.78 in

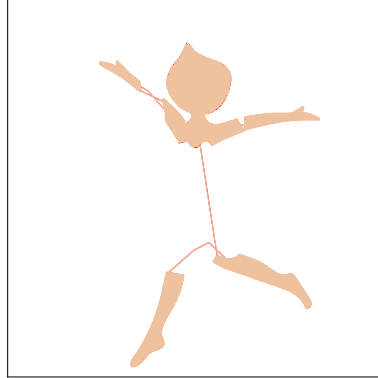
Colors: 5

Colorway: Colorway 1

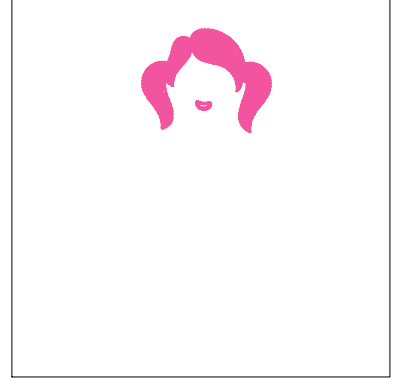
Zoom: 0.49



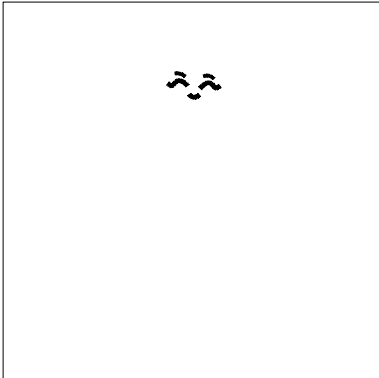
Stop #: 1
Code: 8
Name:
Chart: Wilcom
Stitches: 4,176
Thread used: 79.91ft



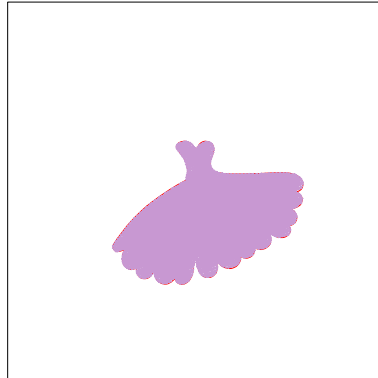
Stop #: 2
Code: 10
Name:
Chart: Wilcom
Stitches: 2,322
Thread used: 36.34ft



Stop #: 3
Code: 7
Name:
Chart: Wilcom
Stitches: 1,534
Thread used: 24.79ft



Stop #: 4
Code: 13
Name: Black
Chart: Wilcom
Stitches: 249
Thread used: 2.65ft



Stop #: 5
Code: 3
Name:
Chart: Wilcom
Stitches: 2,523
Thread used: 50.93ft