

Michaels®

Embroidery Design
Sewing Information

Production Worksheet

Wilcom TrueSizer



Design: **Tree Pose**

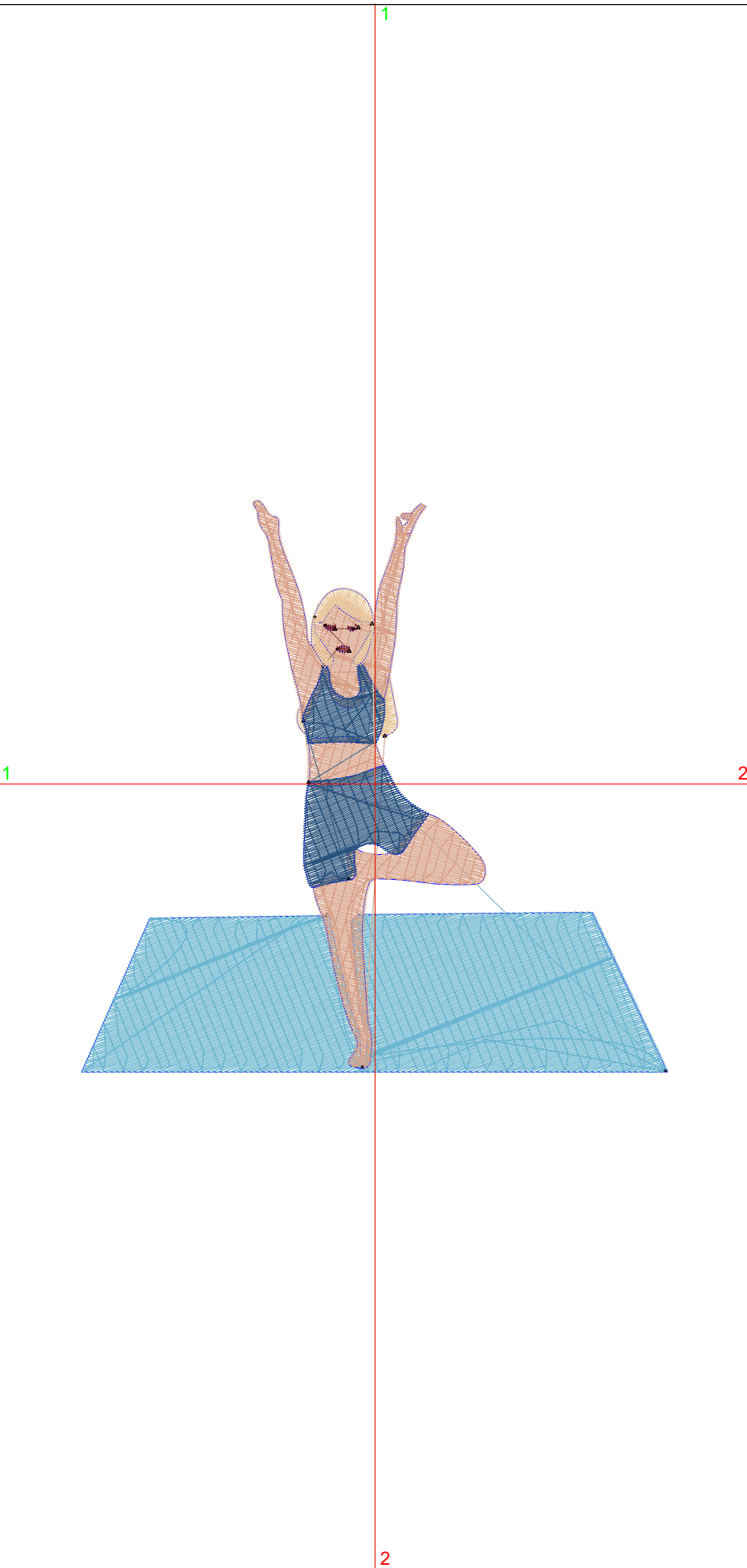
Title: **Tree Pose**

Stitches: 7,655
 Height: 3.72 in
 Width: 3.81 in
 Colors: 5
 Colorway: Colorway 1
 Zoom: 1:1

Machine format: Tajima
 Color changes: 5
 Stops: 6
 Trims: 9
 Auto fabric: Custom Fabric
 Required stabilizer: Topping:
 Backing: Tear Away x 2
 Appliqués: 0
 Left: 48.4 mm
 Right: 48.3 mm
 Up: 46.8 mm
 Down: 47.6 mm
 EndX: 0.00 in
 EndY: 0.00 in
 Area: 14.14 in²
 Max stitch: 7.2 mm
 Min stitch: 0.3 mm
 Max jump: 6.9 mm
 Total thread: 150.54ft
 Total bobbin: 58.28ft

Stop Sequence:

#	#	Color	St.	Code	Name	Chart
1.	5		3,969		Madeira Classic 1376	
2.	23		130		Madeira Classic 1049	
3.	17		2,298		Madeira Classic 1055	
4.	3		932		Madeira Classic 1242	
5.	9		69		Madeira Classic 1078	
6.	23		255		Madeira Classic 1049	



Color Film

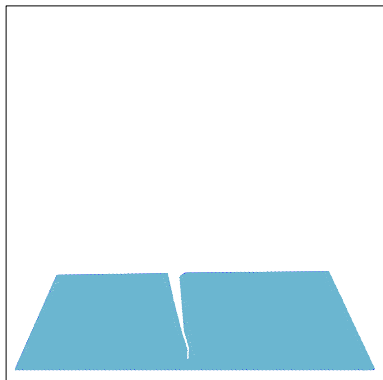
Wilcom TrueSizer



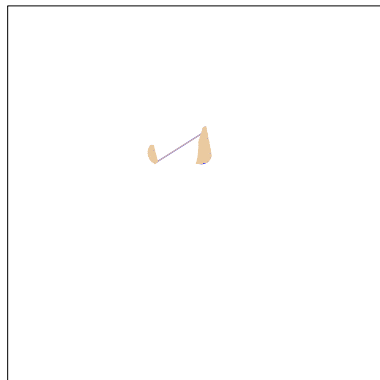
Design: **Tree Pose**

Title: **Tree Pose**

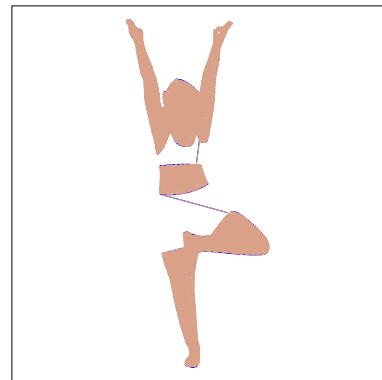
Stitches: 7,655
Height: 3.72 in
Width: 3.81 in
Colors: 5
Colorway: Colorway 1
Zoom: 0.49



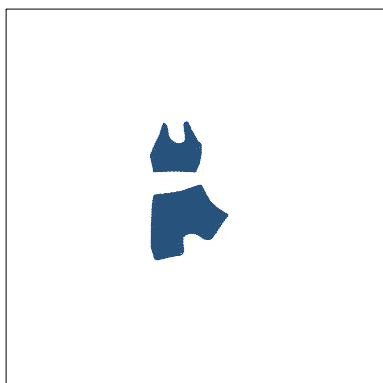
Stop #: 1
Code:
Name:
Chart: Madeira Classic 1376
Stitches: 3,969
Thread used: 86.32ft



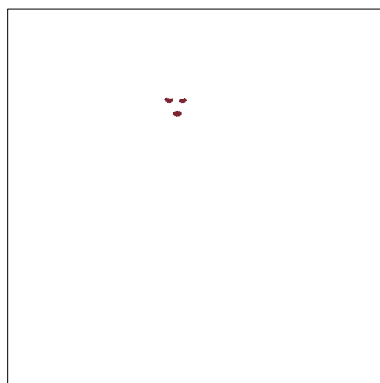
Stop #: 2
Code:
Name:
Chart: Madeira Classic 1049
Stitches: 130
Thread used: 2.04ft



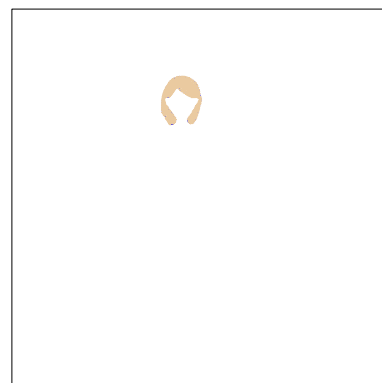
Stop #: 3
Code:
Name:
Chart: Madeira Classic 1055
Stitches: 2,298
Thread used: 38.58ft



Stop #: 4
Code:
Name:
Chart: Madeira Classic 1242
Stitches: 932
Thread used: 17.00ft



Stop #: 5
Code:
Name:
Chart: Madeira Classic 1078
Stitches: 69
Thread used: 0.69ft



Stop #: 6
Code:
Name:
Chart: Madeira Classic 1049
Stitches: 255
Thread used: 3.93ft